



## Gloucester Terrace, W2

£525,000

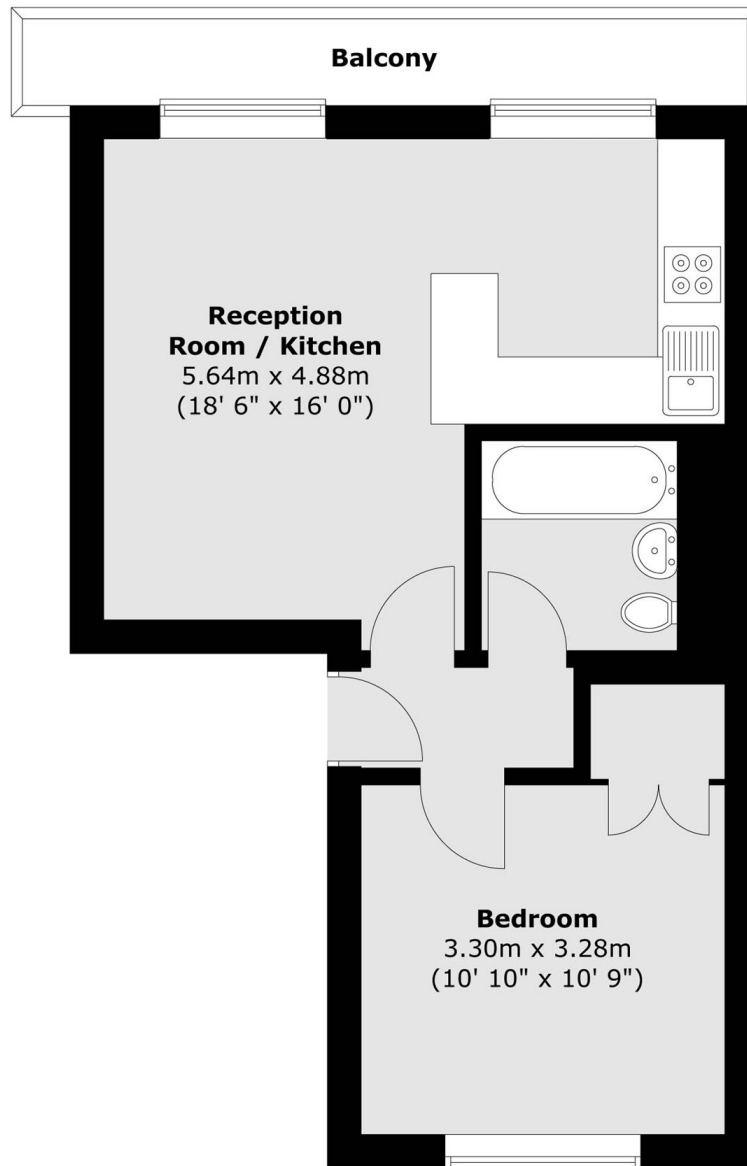
A one bedroom apartment with high ceilings, on the first floor of a white stucco fronted Victorian conversion with access to communal gardens. The property has an open plan reception with direct access to the private balcony and built in wardrobes in the bedroom.

Gloucester Terrace is moments from Westbourne Grove, with plenty of local cafés, bars and restaurants. The green spaces of Hyde Park are a short walk away and Paddington Station is also close by giving easy access across and out of London.

### Features

- First Floor
- High Ceilings
- Private Balcony
- Communal Gardens
- Victorian Conversion
- Hyde Park

Gloucester Terrace,  
London, W2



Total area (approx.) : 40.9 sq. m (440 sq. ft)  
Total balcony area (approx.) : 5.2 sq. m (56 sq. ft)

**Dexters**

Hyde Park and Bayswater  
4-5 Spring Street  
London  
W2 3RA  
Sales  
020 7298 1550

Energy Rating: C. We aim to make our particulars both accurate and reliable. However they are not guaranteed; nor do they form part of an offer or contract. If you require clarification on any points then please contact us, especially if you're traveling some distance to view. Please note that appliances and heating systems have not been tested and therefore no warranties can be given as to their good working order.

 **RICS** | Regulated  
Estate Agent  
and Letting Agent

[dexters.co.uk](https://www.dexters.co.uk)