



**Connells**

Rendell Road  
Leicester



## Property Description

A well-located home in the heart of Belgrave / Rushey Mead (LE4), this property offers excellent access to local amenities, strong transport links, and a family-friendly community. Positioned on a popular residential street, it presents an ideal opportunity for first-time buyers, investors, or growing families looking to secure a home in one of Leicester's most convenient areas.

Rendell Road is exceptionally well placed for day-to-day living. Within minutes you'll find Melton Road / Golden Mile with its supermarkets, restaurants, and independent retailers, highly regarded schools including Rushey Mead Academy and Herrick Primary School, quick access to the A6, A563, and wider motorway network and nearby green spaces such as Cossington Park and Watermead Country Park, perfect for walks, cycling, and family outings.

With strong rental demand, excellent transport links and a layout suited to modern living, this property stands out as a smart purchase in a thriving part of Leicester. Buyers seeking a home they can personalise will find plenty to work with here. Book your viewing today to explore its full potential.

## Entrance Porch

## Entrance Hall

Having stairs leading to the first floor and door leading to the lounge

## Living Room

Double glazed window overlooking the front, carpet flooring and radiator

## Dining Room

well-proportioned space ideal for everyday meals and family gatherings. Positioned to flow naturally from the main living area, it offers enough room for a full dining table and additional storage or display furniture, double glazed window and radiator

## Kitchen

Fitted with wall and base units, oven, hob and extractor fan, part tiled walls, radiator and double glazed window overlooking the rear

## Ground Floor Wc

Consisting of low level WC and wash hand basin

## First Floor Landing

## Bedroom One

Generously sized main bedroom with double glazed window and radiator

## Bedroom Two

A comfortable and well-proportioned room, good-sized window brings in natural light, giving the space a bright and pleasant feel throughout the day and radiator

## Bedroom Three

A practical and versatile single room, well-suited for use as a child's bedroom, nursery, study, or hobby space, double glazed window and radiator

## Bathroom

Fitted with a three piece suite comprising panelled bath with shower over, low level WC and wash hand basin, tiled walls and obscure glazed window

## Basement

The basement offers a useful additional level of space. Its solid structure provides a practical area, with its naturally cooler environment and separation from the ground floor, it can also serve as a hobby room, utility zone, or workspace if desired.

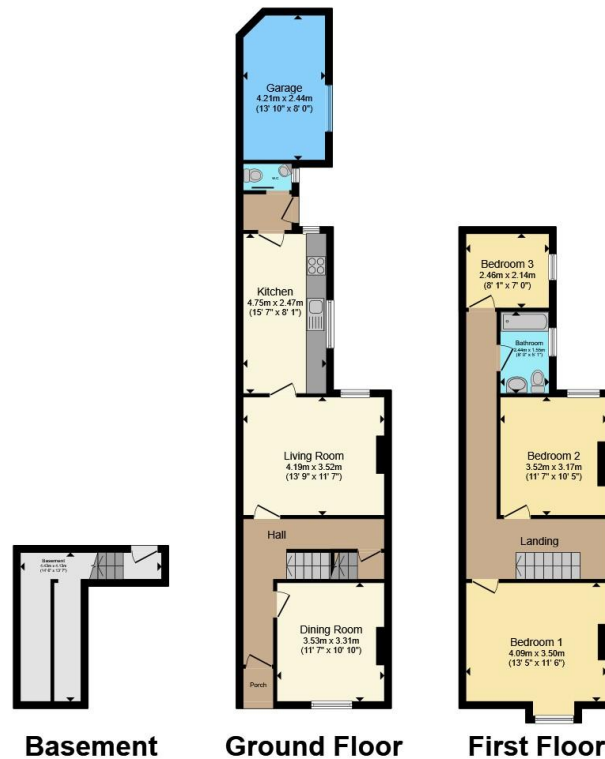
## Garage

Provides additional storage space for tools, garden furniture. With direct access from the front of the property, it adds valuable convenience and functionality to the home.









Total floor area 123.7 m<sup>2</sup> (1,331 sq.ft.) approx

This floor plan is for illustrative purposes only. It is not drawn to scale. Any measurements, floor areas (including any total floor area), openings and orientation are approximate. No details are guaranteed, they cannot be relied upon for any purpose and they do not form part of any agreement. No liability is taken for any error, omission or misstatement. A party must rely upon its own inspection(s). Powered by [www.propertybox.io](http://www.propertybox.io)



To view this property please contact Connells on

**T 0116 262 0022**  
**E [leicester@connells.co.uk](mailto:leicester@connells.co.uk)**

22-24 Halford Street  
 LEICESTER LE1 1JB

EPC Rating: D Council Tax  
 Band: A

Tenure: Freehold

**view this property online [connells.co.uk/Property/LTR325758](http://connells.co.uk/Property/LTR325758)**



1. MONEY LAUNDERING REGULATIONS Intending purchasers will be asked to produce identification documentation at a later stage and we would ask for your co-operation in order that there will be no delay in agreeing the sale. 2. These particulars do not constitute part or all of an offer or contract. 3. The measurements indicated are supplied for guidance only and as such must be considered incorrect. Potential buyers are advised to recheck measurements before committing to any expense. 4. We have not tested any apparatus, equipment, fixtures, fittings or services and it is in the buyers interest to check the working condition of any appliances.

Connells Residential is registered in England and Wales under company number 1489613, Registered Office is Cumbria House, 16-20 Hockliffe Street, Leighton Buzzard, Bedfordshire, LU7 1GN. VAT Registration Number is 500 2481 05.

**See all our properties at [www.connells.co.uk](http://www.connells.co.uk) | [www.rightmove.co.uk](http://www.rightmove.co.uk) | [www.zoopla.co.uk](http://www.zoopla.co.uk)**

Property Ref: LTR325758 - 0004