

oakheart

£280,000

Offers Over
Clermont Avenue, Sudbury



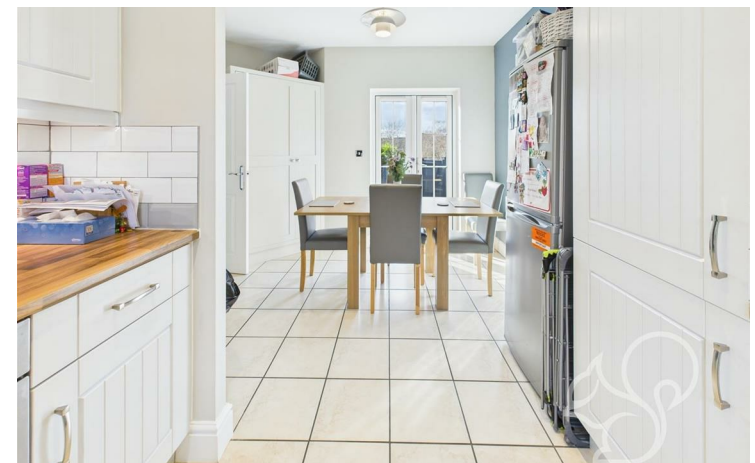
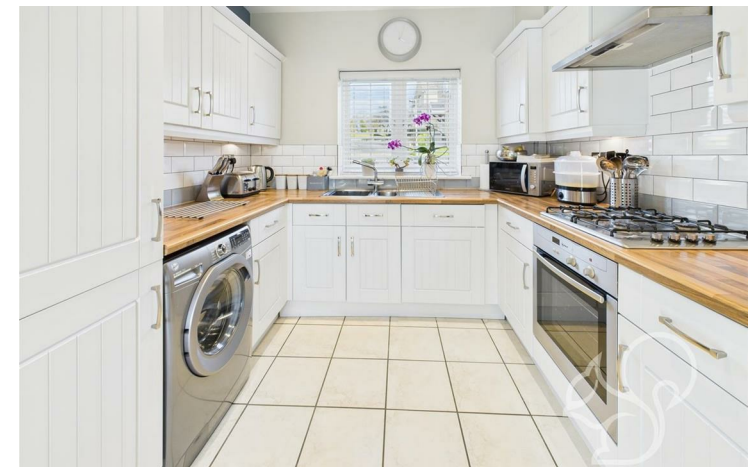
Situated in a sought-after residential area, this beautifully presented three-bedroom home offers versatile living space, making it ideal for first-time buyers, families, or investors. Conveniently located for easy access to the town centre and local schools, the property boasts a well-balanced layout across two floors, complemented by a fully enclosed rear garden and two private parking spaces.

Inside, the property offers deceptively spacious and light-filled accommodation. The ground floor features a welcoming entrance hall with stylish dark wood banisters, a convenient downstairs WC, and a versatile study – perfect for home working. The generously sized lounge benefits from

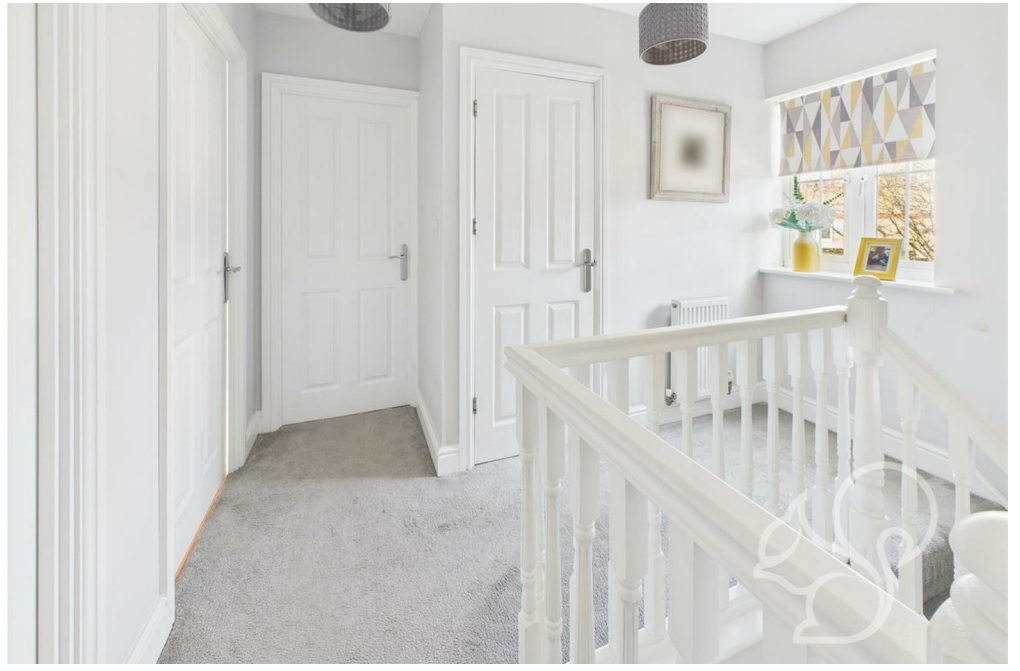
dual-aspect windows and patio doors opening onto the rear garden. At the heart of the home is an open-plan kitchen and dining area, complete with integrated appliances, stylish lighting, and ample workspace. The dining area also enjoys garden access, providing a seamless transition for outdoor entertaining. Upstairs, the home continues to impress with three well-proportioned bedrooms. The primary bedroom benefits from fitted wardrobes and an en-suite shower room, while the second bedroom enjoys lovely views over Clermont Avenue. A further bedroom and a modern family bathroom complete the first floor. The landing also offers loft access via a fitted ladder and includes a useful airing cupboard.

The rear garden is designed for both relaxation and practicality, featuring a patio seating area and a well-maintained lawn, all enclosed by fencing for privacy. Two sets of patio doors from the lounge and dining area enhance the connection to the outdoor space, making it perfect for summer barbecues and entertaining. The rear gate leads directly to the private parking spaces for added convenience.

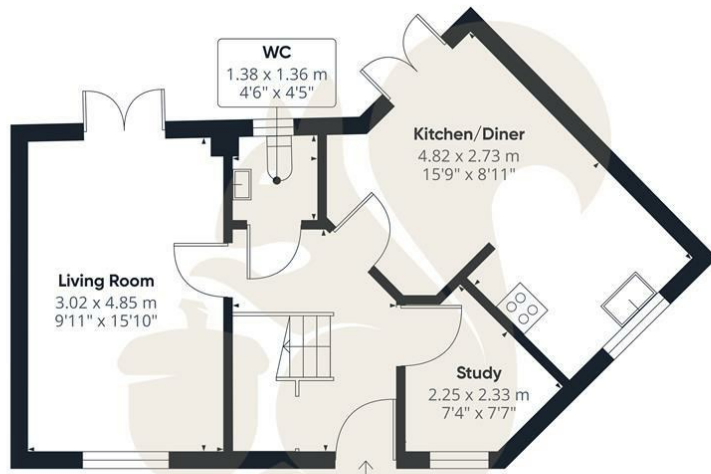
This is a fantastic opportunity to secure a well-located, move-in-ready home in a thriving community. Early viewing is highly recommended!



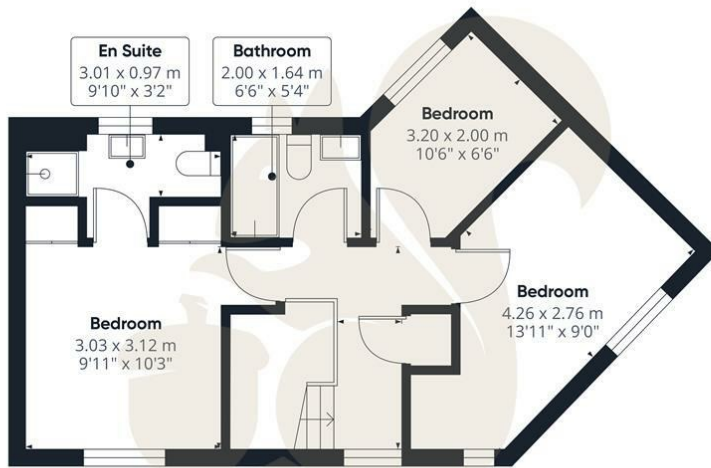








Ground Floor



Floor 1



oakheart

Approximate total area⁽¹⁾
84.1 m²
904 ft²

(1) Excluding balconies and terraces

Calculations reference the RICS IPMS 3C standard. Measurements are approximate and not to scale. This floor plan is intended for illustration only.

GIRAFFE360

Local Authority:

Tenure:
Freehold

Council Tax Band:
C

Energy Efficiency Rating

	Current	Potential
Very energy efficient - lower running costs		
(92 plus) A		
(81-91) B		
(69-80) C	79	83
(55-68) D		
(39-54) E		
(21-38) F		
(1-20) G		
Not energy efficient - higher running costs		
England & Wales	EU Directive 2002/91/EC	

Agents Note: Whilst every care has been taken to prepare these particulars, they are for guidance purposes only. All measurements are approximate and are for general guidance purposes only and whilst every care has been taken to ensure their accuracy, they should not be relied upon.

Oakheart Sudbury
01787 322 322
sudbury@oakheart.co.uk
18 Market Hill, Sudbury, Suffolk, CO10 2EA

oakheart