



Martel Close

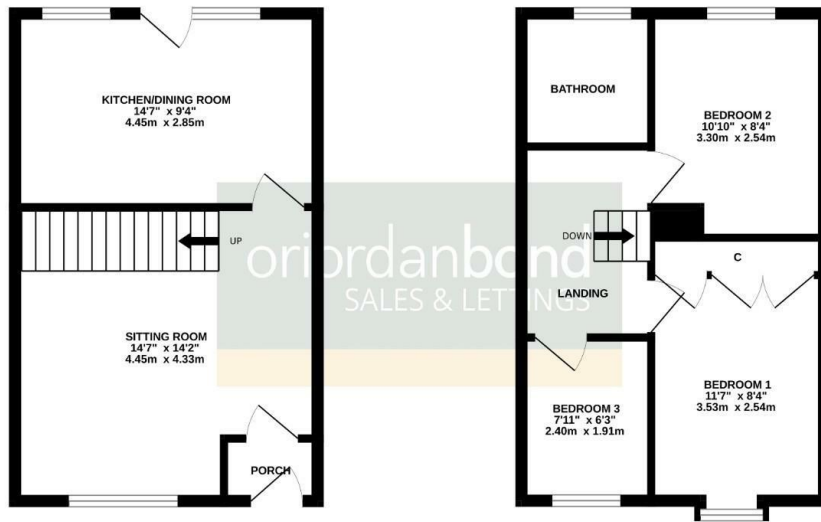
Duston, Northampton

oriordanbond
SALES & LETTINGS



GROUND FLOOR
344 sq.ft. (31.9 sq.m.) approx.

1ST FLOOR
343 sq.ft. (31.9 sq.m.) approx.



TOTAL FLOOR AREA : 687 sq.ft. (63.8 sq.m.) approx.

Whilst every attempt has been made to ensure the accuracy of the floorplan contained here, measurements of doors, windows, rooms and any other items are approximate and no responsibility is taken for any error, omission or mis-statement. This plan is for illustrative purposes only and should be used as such by any prospective purchaser. The services, systems and appliances shown have not been tested and no guarantee as to their operability or efficiency can be given.
Made with Metacube (2020)

Martel Close

Duston
NN5 6HA

PRICE £242,500

Situated within the popular Alsace Park development is this three bedroom terraced home, within walking distance to local amenities, schools and bus routes.

Offered for sale with no onward chain, the accommodation comprises porch, sitting room and kitchen/dining room. To the first floor are three bedrooms with built-in wardrobes to the master and a family bathroom. Outside is an enclosed garden to the rear and off road parking to the front with a garage located in a nearby block. Further benefits include uPVC double glazing and gas radiator heating. (B/687/S)

Additional information

- Council Tax Band: B
- Energy Efficiency Rating: D

Viewing

Viewing strictly by appointment – details below

Disclaimer

O'Riordan Bond Estate Agents Limited has not tested apparatus, equipment, fittings or services and so cannot verify they are in working order. The buyer is advised to obtain verification from their solicitor or surveyor.

O'Riordan Bond Duston North Sales
01604 589007

dustonnorth@oriordanbond.co.uk

