



BEAUFORT GREEN

Prothero Road, SW6

£1,195,000



A beautifully presented four-bedroom Victorian terraced home arranged over three floors, offering approximately 1,480 sq ft of thoughtfully designed living space in the heart of Fulham. Combining elegant period character with contemporary finishes, the property features a bright double reception room with ornate corning and feature fireplace, a stylish extended kitchen, and spacious bedrooms throughout.

To the rear, bi-fold doors open onto a low-maintenance private garden, creating an excellent space for entertaining and family living.

The loft conversion provides a generous principal suite with bespoke bathroom and additional storage, while the remaining bedrooms are well proportioned and filled with natural light.

Prothero Road is a quiet residential street ideally positioned within easy reach of Fulham Broadway, Parsons Green and West Brompton stations, along with the popular cafés, restaurants and boutiques of Munster Village and Fulham Road.



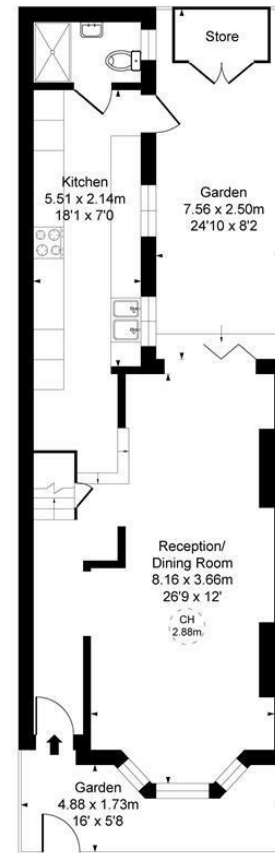


BEAUFORT GREEN



BEAUFORT GREEN

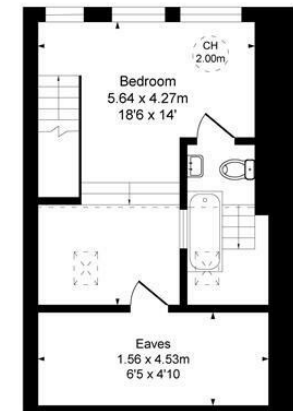
Prothero Road, SW6
Approximate Gross Internal Area
137.47 sq m / 1480 sq ft
(Excluding restricted height
under 1.5m 119.29 sq m 1284 ft)
(CH = Ceiling Heights)



Ground Floor



First Floor



Second Floor

At a Glance.

- Four spacious bedrooms
- Approx. 1,480 sq ft
- Double reception room
- Extended modern kitchen
- Private rear garden
- Quiet Fulham location

This plan is not to scale. It is for guidance and not for valuation purposes.
All measurements and areas are approximate only, and have been prepared in accordance with the current edition of the RICS Code of Measuring Practice.

BEAUFORT GREEN

02074594100

charlie@beaufortgreen.co.uk

263 New Kings Road
London
SW16 1DB