



32 Spurr Street

, Sheffield, S2 3GY

£1,250 PCM

An immaculately presented three bedroom terraced house situated in the popular location of Heeley. AVAILABLE NOW ON AN UNFURNISHED BASIS

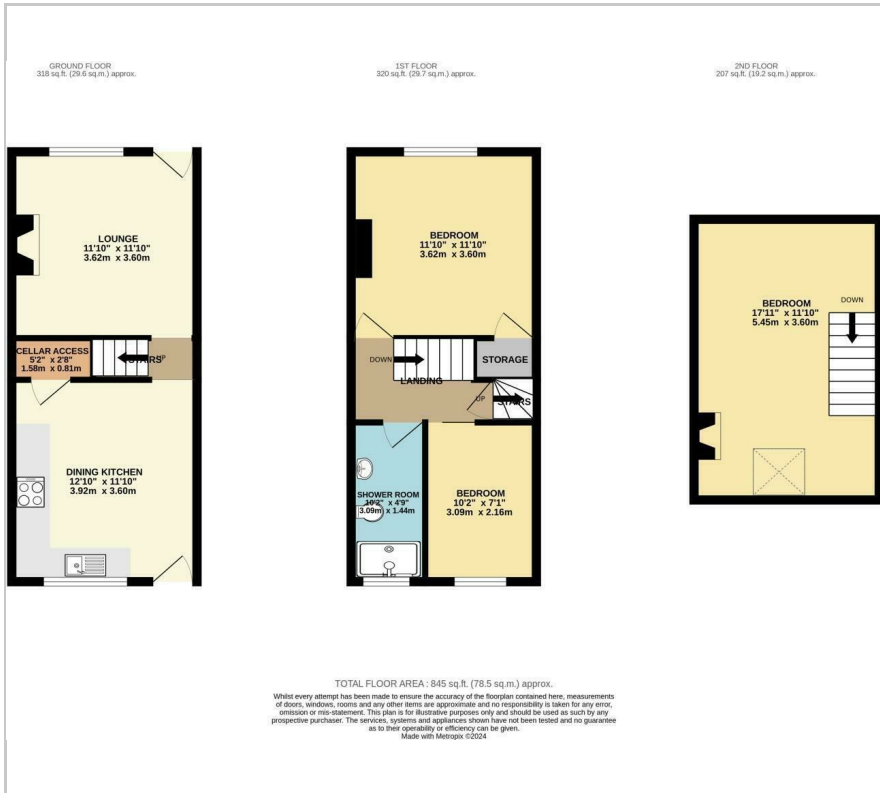
- Three bedroom mid terrace house
- Kitchen diner
- Living room with feature fireplace
- Large attic bedroom
- Rear garden and patio
- Shower room with WC, basin and radiator
- ON ROAD PARKING - NO PERMIT REQUIRED
- UNFURNISHED AND AVAILABLE NOW
- COUNCIL TAX BAND: A
- EPC RATING: C

Viewing

Please contact our ELR Europa Link Office on 01142689900 if you wish to arrange a viewing appointment for this property or require further information.



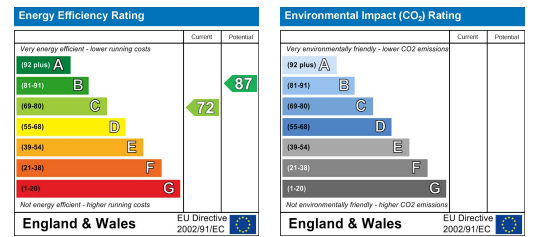
Floor Plan



Area Map



Energy Efficiency Graph



These particulars, whilst believed to be accurate are set out as a general outline only for guidance and do not constitute any part of an offer or contract. Intending purchasers should not rely on them as statements of representation of fact, but must satisfy themselves by inspection or otherwise as to their accuracy. No person in this firm's employment has the authority to make or give any representation or warranty in respect of the property.