



Lyttelton Road, Stechford, Birmingham

burchell
edwards

Lyttelton Road, Stechford, Birmingham, B33 8BJ

for sale
£270,000



Property Description

A traditional style three bedroom extended, semi detached property in need of some modernisation. Accommodation comprises entrance porch, entrance hallway, lounge, kitchen, lean to and guest WC. First floor has three bedrooms and shower. Property further benefits from double glazing, gas central heating, garage / workshop, off road parking, garden and no upward chain.

Approach

Driveway providing off road parking.

Entrance Porch

Double glazed window to rear elevation and door into:

Entrance Hallway

Double glazed window to front elevation, stairs to first floor accommodation and all doors off to:

Lounge

25' 2" into bay x 14' 1" max (7.67m into bay x 4.29m max)

Double glazed bay window to front elevation, feature fire surround with space for inset gas fire, central heating radiator, sliding patio doors giving access to lean- to.

Lean-To/ Conservatory

11' 3" x 6' 9" (3.43m x 2.06m)

Door into guest W.C and door to rear elevation.

Kitchen

20' 6" x 9' 4" minimum (6.25m x 2.84m minimum)

L shaped room. Double glazed windows to rear and side elevations, a range of wall and base units with work surface over incorporating a sink with drainer unit, space and connections for gas cooker, space and plumbing for washing machine, space for other appliances, central heating boiler and central heating radiator.

Landing

Double glazed window to front elevation and all doors off to:

Bedroom One

14' 1" x 11' 2" (4.29m x 3.40m)

Double glazed window to rear elevation and central heating radiator.

Bedroom Two

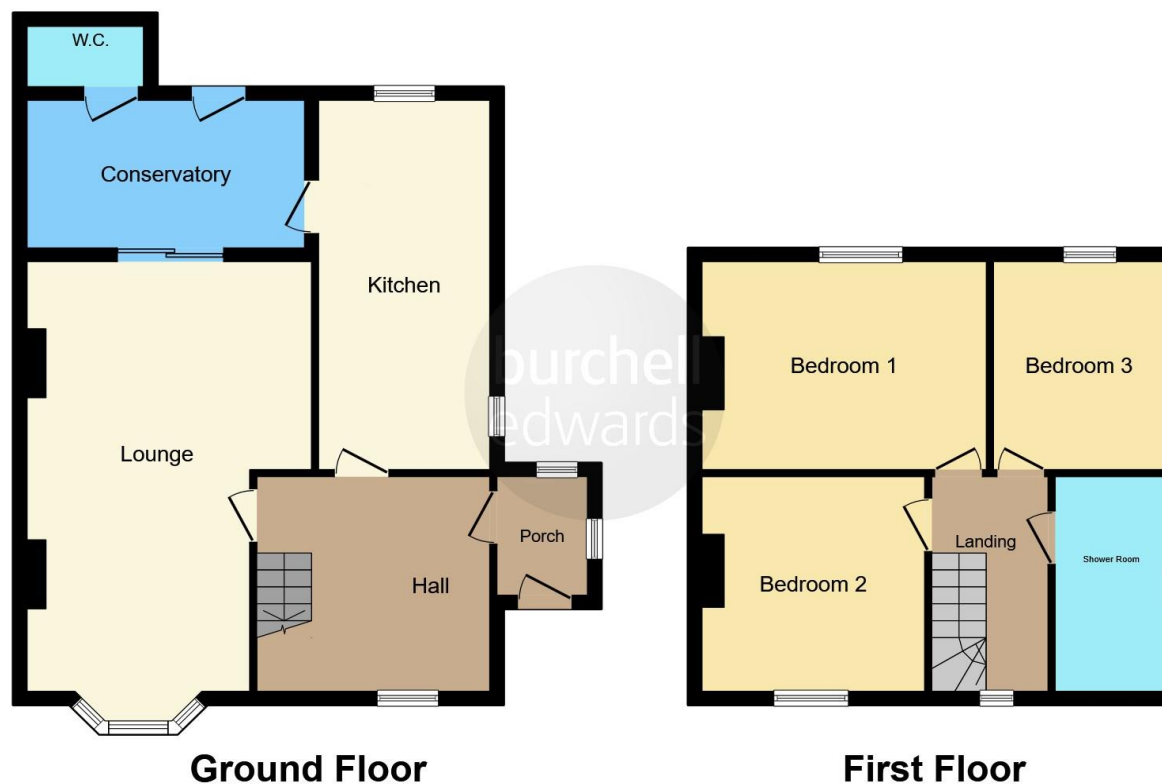
10' 8" x 9' 11" (3.25m x 3.02m)

Double glazed window to front elevation and central heating radiator.









This floor plan is for illustrative purposes only. It is not drawn to scale. Any measurements, floor areas (including any total floor area), openings and orientation are approximate. No details are guaranteed, they cannot be relied upon for any purpose and they do not form part of any agreement. No liability is taken for any error, omission or misstatement. A party must rely upon its own inspection(s). Powered by www.focalagent.com

To view this property please contact Burchell Edwards on

T 0121 742 1725
E sheldon@burchelledwards.co.uk

2208 Coventry Road Sheldon
 BIRMINGHAM B26 3JH

EPC Rating: D Council Tax
 Band: C

Tenure: Freehold

view this property online burchelledwards.co.uk/Property/SHL210850



1. MONEY LAUNDERING REGULATIONS Intending purchasers will be asked to produce identification documentation at a later stage and we would ask for your co-operation in order that there will be no delay in agreeing the sale. 2. These particulars do not constitute part or all of an offer or contract. 3. The measurements indicated are supplied for guidance only and as such must be considered incorrect. Potential buyers are advised to recheck measurements before committing to any expense. 4. We have not tested any apparatus, equipment, fixtures, fittings or services and it is in the buyers interest to check the working condition of any appliances.

Burchell Edwards is a trading name of Connells Residential which is registered in England and Wales under company number 1489613, Registered Office is Cumbria House, 16-20 Hockliffe Street, Leighton Buzzard, Bedfordshire, LU7 1GN. VAT Registration Number is 500 2481 05.

See all our properties at www.burchelledwards.co.uk | www.rightmove.co.uk | www.zoopla.co.uk

Property Ref: SHL210850 - 0007