

£700 per month

Balmoral Cottage, Station Road, Redcar, TS10



- Entrance Hallway
- Lounge
- Dining Room
- Kitchen
- Downstairs Toilet
- Bathroom
- Two Bedrooms
- Part Furnished
- EPC Rated: E

We are delighted to welcome this charming two bedroom cottage for rent just a stone's throw from the seafront.

Permit parking to the rear of the property.

Move In Costs

Deposit £700

Rent £700

Holding Payment £161 - (please note this payment forms part of the deposit above)

EPC: E

Council Tax: A

*There are no application/administration fees payable as per the Tenant Fees Act 2019.

https://assets.publishing.service.gov.uk/media/5f745d69d3bf7f287328e5a5/Tenant_Fees_Act_-_Tenant_Guidance.pdf

We are proudly Members of the following:

ARLA, NAEA, The Tenancy Deposit Scheme, The Deposit Protection Service and The Property Ombudsman, CMP Registered Agent.

Please note that a guarantor may be required depending on circumstances. Please contact us for more information.

Balmoral Cottage, Station Road, Redcar, TS10

Entrance Hallway

Vinyl flooring. Pendant light. Radiator.
Cupboard with gas and electric meters and consumer unit. Smoke detector.

Downstairs W/C

2'7" x 8'9" (0.79m x 2.67m)
Storage area off. Vinyl flooring. Toilet. Sink with vanity unit. Extractor fan. Spot lights. Mirror.

Lounge

13'5" x 13'9" (4.09m x 4.19m)
Laminate flooring. Window with nets and curtains. Fire surround. Sofa. Chair. Radiator. Pendant light. TV.

Dining Room

9'7" x 13'9" (2.92m x 4.19m)
Laminate flooring. Radiator. Window with nets and curtains. Pendant light. Dining table and chairs.

Stairs/Landing

Carpet. Window with nets and curtains. Smoke detector. Pendant light. Small cupboard (not for tenant use).

Separate Toilet

3'1" x 6'5" (0.94m x 1.96m)
Vinyl flooring. Window. Toilet. Sink. Pendant light. Mirror.

Bedroom 1

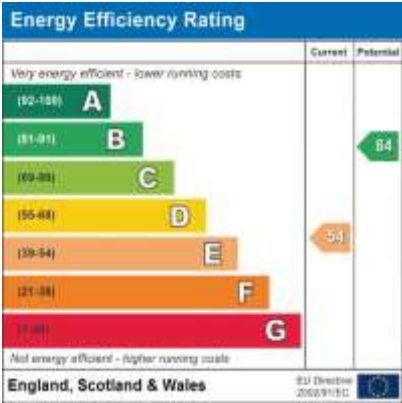
13'4" x 13'6" (4.06m x 4.11m)
Vinyl flooring. Radiator. Window with nets and curtains. Pendant light. Single bed with bedding. Chair. Wardrobe. Mirror.

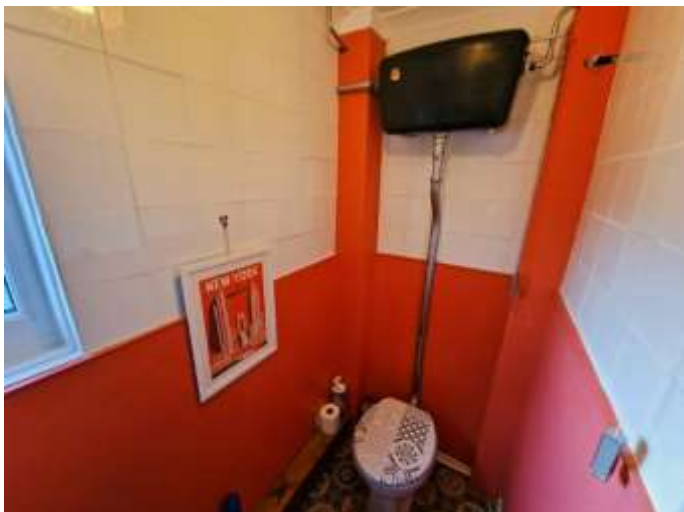
Bedroom 2

13'9" x 10'8" (4.19m x 3.25m)
Vinyl flooring. Radiator. Window with nets and curtains. Pendant light. Double bed with bedding. Clothes rails. Sink. Chair.

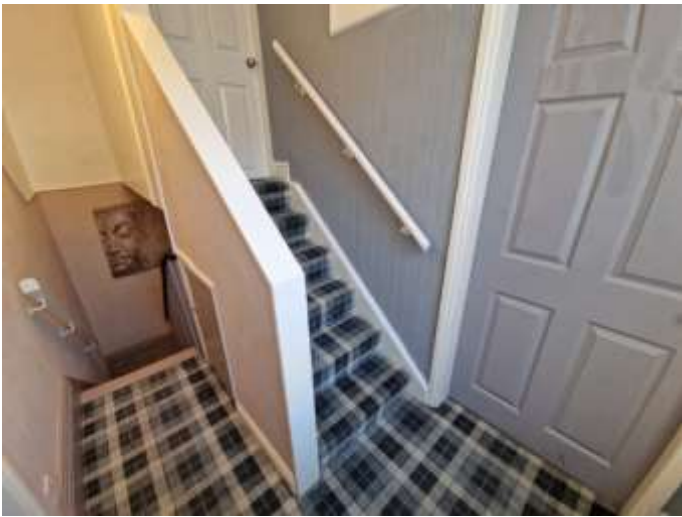
Bathroom

6'2" x 7'3" (1.88m x 2.21m)
Vinyl flooring. Window. Radiator. Spot light. Bath with shower over. Shower curtain. Sink. Mirror.



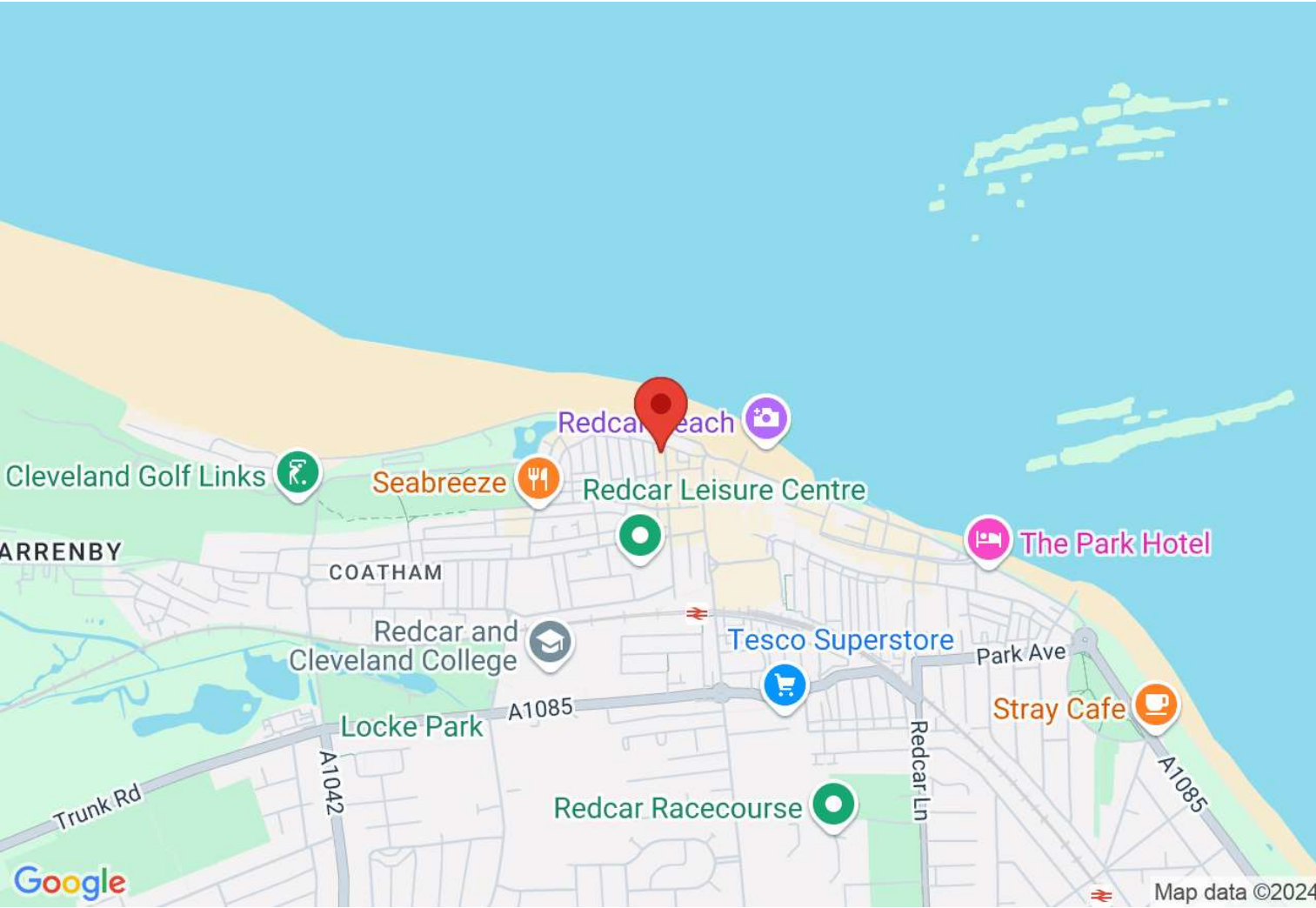






Directions

Location



VIEWING BY APPOINTMENT WITH AGENTS REDCAR LETTINGS & SALES COMPANY LTD

Exchange Buildings,17-19 Cleveland Street,Redcar,TS10 1AR T: 01642 483430 E: info@redcarletting.co.uk W: redcarlettingandsales.co.uk

General: While we endeavour to make our sales particulars fair, accurate and reliable, they are only a general guide to the property and, accordingly, if there is any point which is of particular importance to you, please contact the office and we will be pleased to check the position for you, especially if you are contemplating travelling some distance to view the property.

Measurements: These approximate room sizes are only intended as general guidance. You must verify the dimensions carefully before ordering carpets or any built-in furniture. Services: Please note we have not tested the services or any of the equipment or appliances in this property, accordingly we strongly advise prospective buyers to commission their own survey or service reports before finalizing their offer to purchase.

THESE PARTICULARS ARE ISSUED IN GOOD FAITH BUT DO NOT CONSTITUTE REPRESENTATIONS OF FACT OR FORM PART OF ANY OFFER OR CONTRACT. THE MATTERS REFERRED TO IN THESE PARTICULARS SHOULD BE INDEPENDENTLY VERIFIED BY PROSPECTIVE BUYERS OR TENANTS. NEITHER REDCAR LETTINGS & SALES COMPANY LTD NOR ANY OF ITS EMPLOYEES OR AGENTS HAS ANY AUTHORITY TO MAKE OR GIVE ANY REPRESENTATION OR WARRANTY WHATEVER IN RELATION TO THIS PROPERTY.

YOUR HOME IS AT RISK IF YOU DO NOT KEEP UP REPAYMENTS ON A MORTGAGE OR OTHER LOAN SECURED ON IT.

Written quotations available on request. All loans secured on property. Life assurance is usually required.