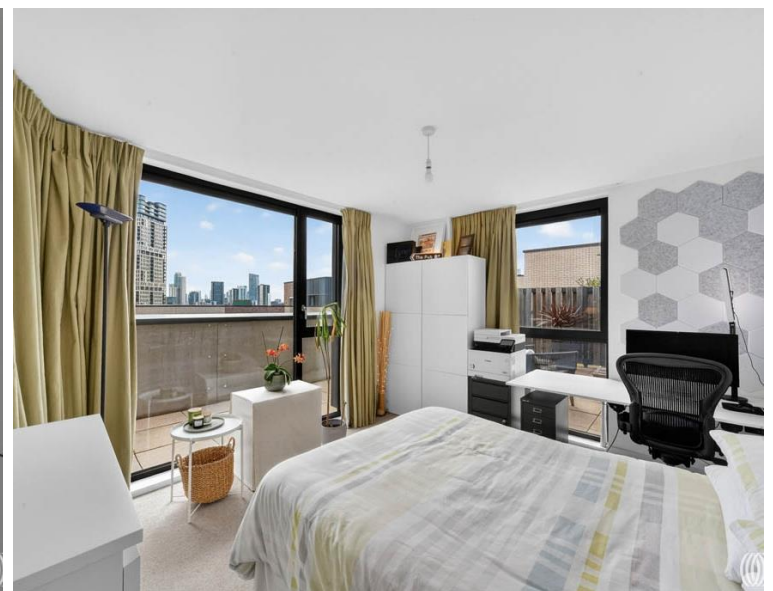
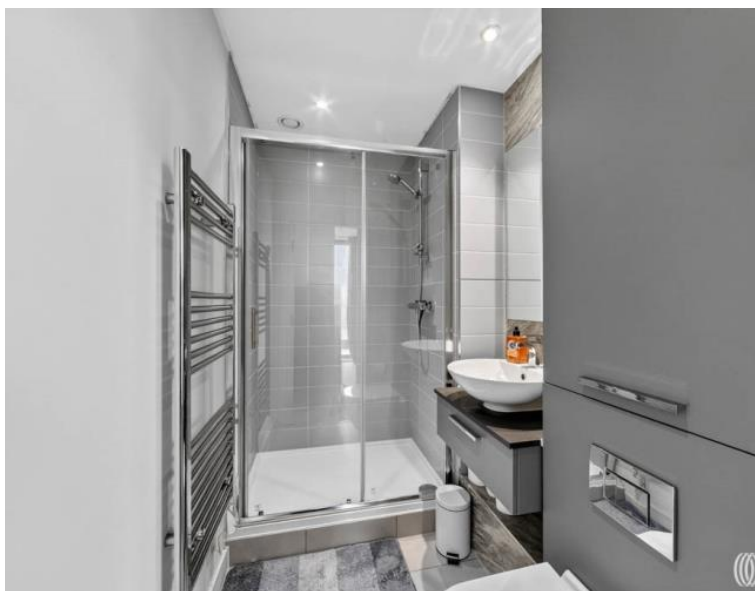
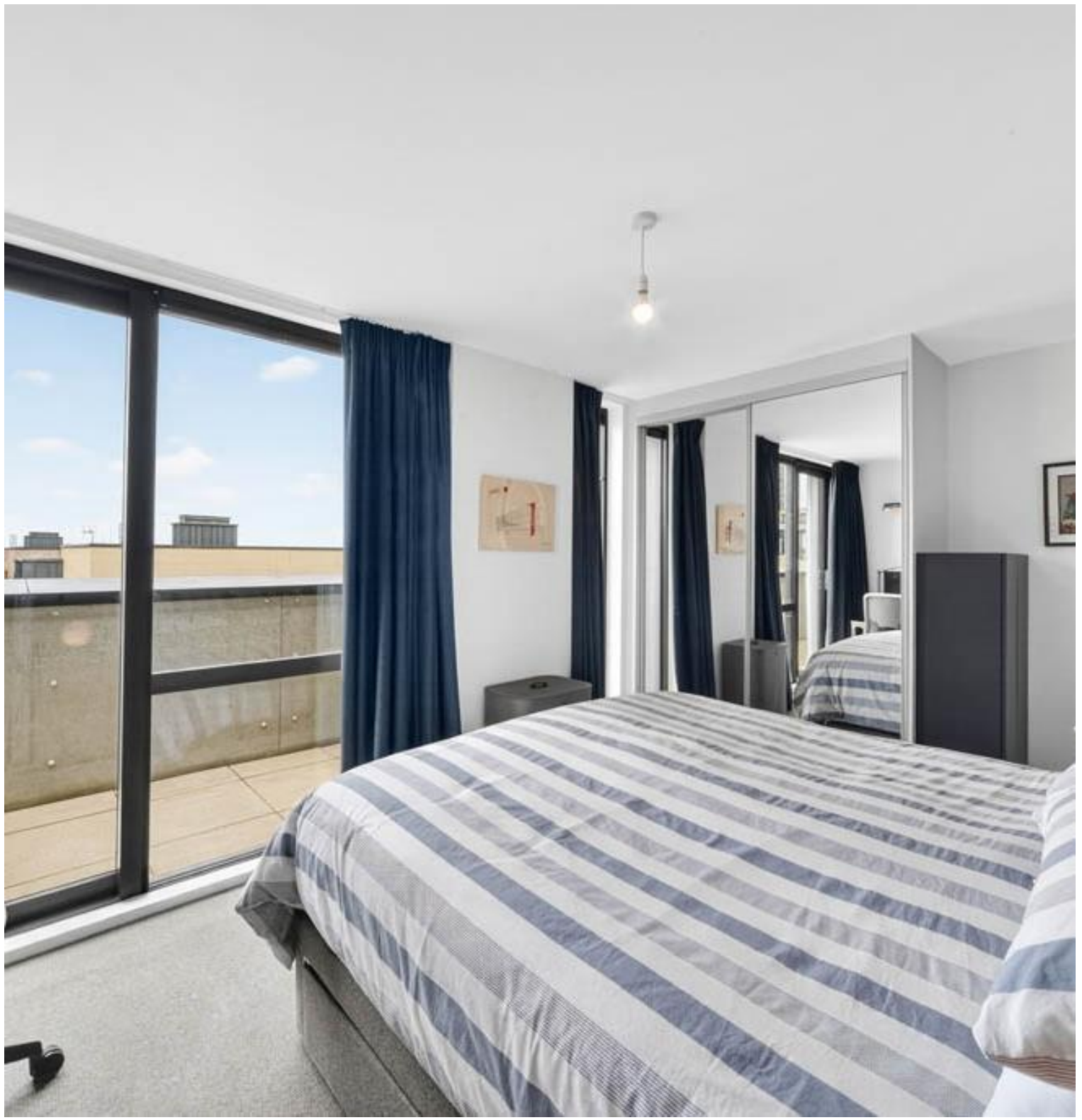


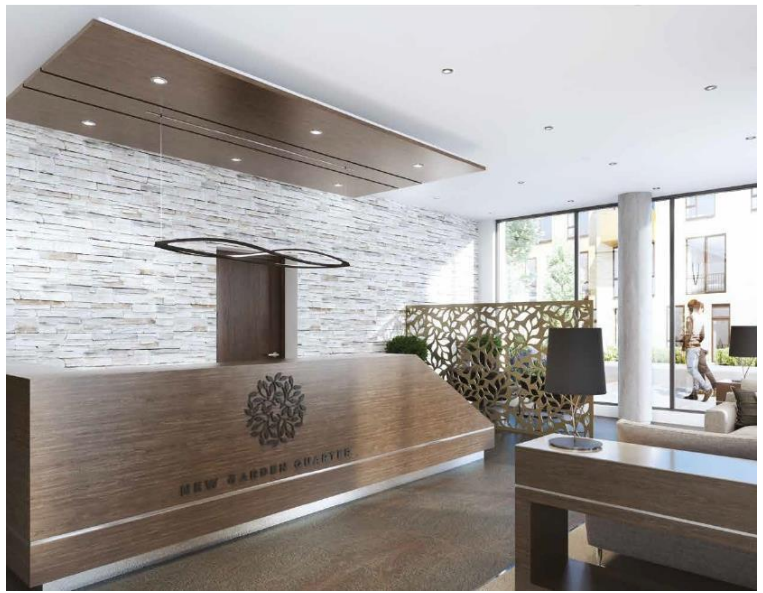


Leyton Road, London E15

£699,995 Leasehold







Description

Positioned within Stratford's prestigious New Garden Quarter, this exceptional two-bedroom apartment combines stylish modern living with exceptional convenience. As well as featuring a sweeping wraparound private terrace, en-suite bathroom, secure underground parking and underfloor heating, the property offers exclusive access to a resident's gym and round-the-clock concierge service. Located moments from Queen Elizabeth Olympic Park and Westfield Stratford City, with outstanding transport links to Central London, Canary Wharf and the City, this apartment delivers the perfect balance of urban connectivity and quality lifestyle amenities.

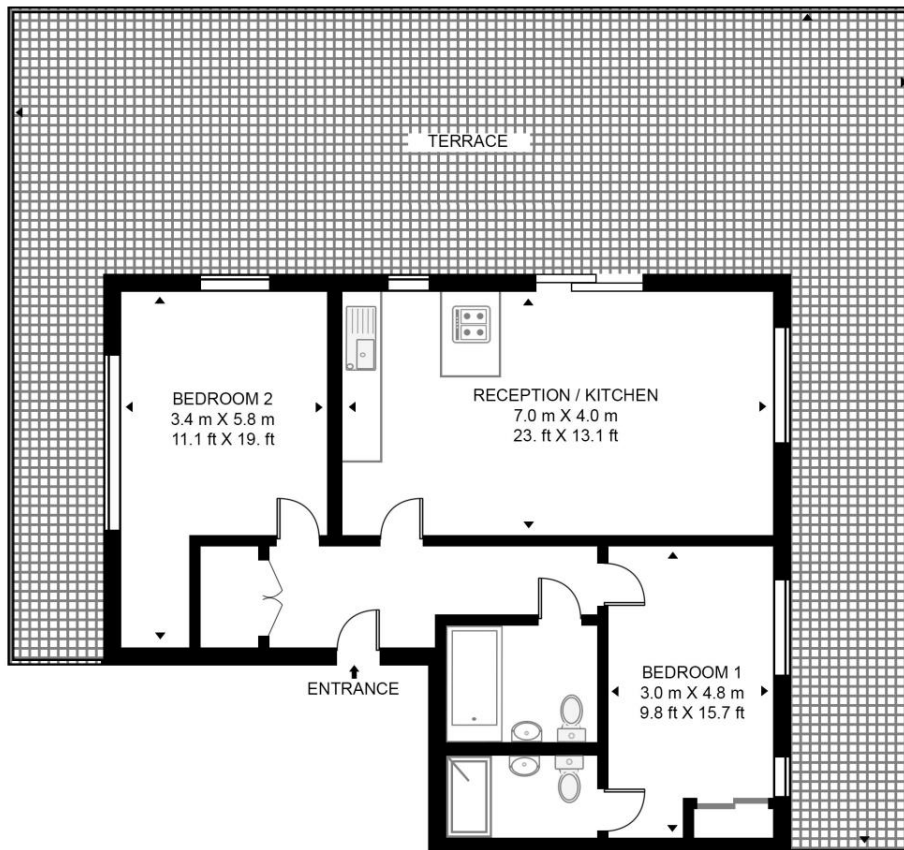
Occupying an enviable position on the sixth floor - accessible by lift - this beautifully designed apartment showcases impeccable specification and detail throughout, including underfloor heating for year-round comfort. The spacious dual-aspect layout is enhanced by an expansive wraparound terrace, perfect for entertaining. The space is arranged to offer two well-proportioned bedrooms, including a principal suite with en-suite alongside a separate family bathroom. A luxury apartment, perfectly positioned to enjoy all that the capital offers.

- Large approx. 77.5sq m private terrace
- Two bathrooms (one en-suite)
- 6th Floor with lift access
- Underground parking
- 24-hour Concierge service
- Residents' gym
- Underfloor heating
- Landscaped garden square
- Queen Elizabeth Park adjacent
- Westfield Stratford nearby

Floorplan

836 sq ft | 78 sq m

CARRIAGE HOUSE, NEW GARDEN QUARTER APPROXIMATE GROSS INTERNAL FLOOR AREA 836 SQ.FT (77.7 SQ.M)



SIXTH FLOOR



This floor plan has been defined by the RICS Code of Measurement. This floor plan and all others are for approximate representative purposes only and upon usage is agreed to as such by the client.

WWW: hdvirtualart.com | TEL: 0203.974.1567 | EMAIL: info@hdvirtualart.com

Stratford
5 Station Street,
London E15 1DA
+4420 3147 1500
Lettingsstratford@eu.jll.com

Urban living, your way.

jll.co.uk/residential

© 2019 Jones Lang LaSalle IP, Inc. All rights reserved. All information contained herein is from sources deemed reliable; however, no representation or warranty is made to the accuracy thereof.

