



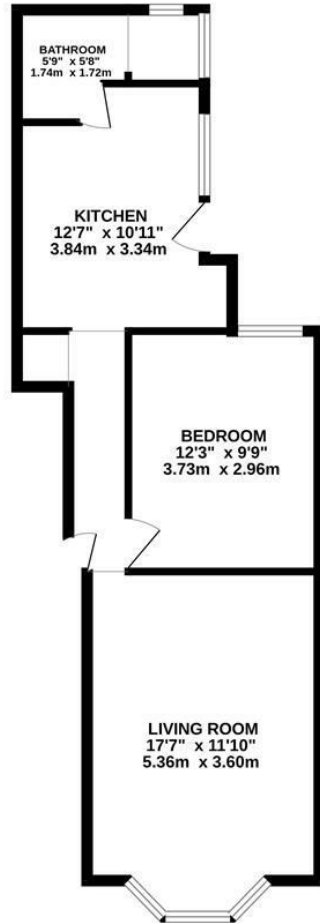
St. Helens Road, Hastings TN34 2LG

Offers in excess of £195,000



A spacious ONE BEDROOM garden apartment spanning the GROUND FLOOR of this attractive residence ADJACENT TO ALEXANDRA PARK. It's ideally positioned just a short stroll from the beach and Hastings Town Centre where there are a range of shopping facilities, eateries and a mainline railway station with connections to London. The accommodation here enjoys a GENEROUS LIVING SPACE which enjoys a front facing bay window overlooking your private front garden and Alexandra Park, there is a separate kitchen/breakfast room which is positioned at the rear of the property and benefits from access out to the SMALL COURTYARD GARDEN. There is a double bedroom and shower room. Being sold with NO ONWARD CHAIN, a long lease and share of freehold this fantastic property would make the PERFECT FIRST TIME HOME.

GROUND FLOOR
520 sq.ft. (48.3 sq.m.) approx.



TOTAL FLOOR AREA : 520 sq.ft. (48.3 sq.m.) approx.

Whilst every attempt has been made to ensure the accuracy of the floorplan contained here, measurements of doors, windows, rooms and any other items are approximate and no responsibility is taken for any error, omission or mis-statement. This plan is for illustrative purposes only and should be used as such by any prospective purchaser. The services, systems and appliances shown have not been tested and no guarantee as to their operability or efficiency can be given.
Made with Metropix ©2025

