

martin-thornton.com
01484 508000



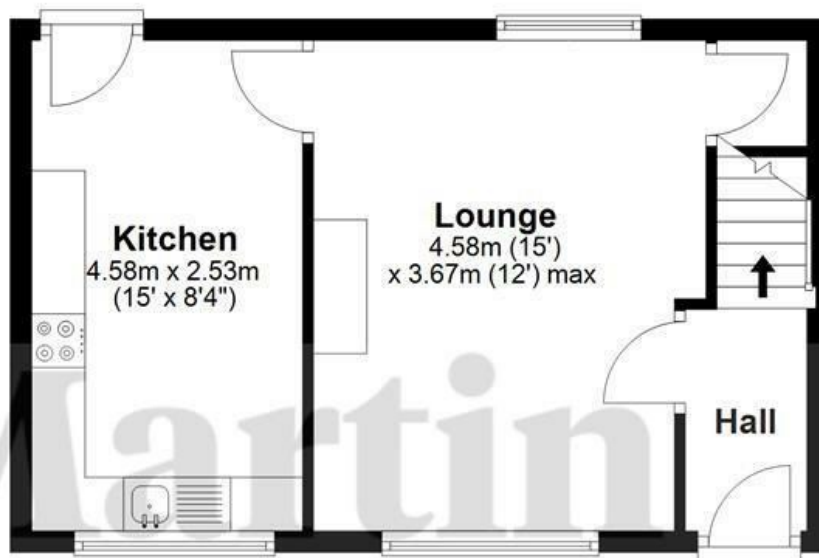
Hill Top Road, Paddock Huddersfield,

Offers over £130,000

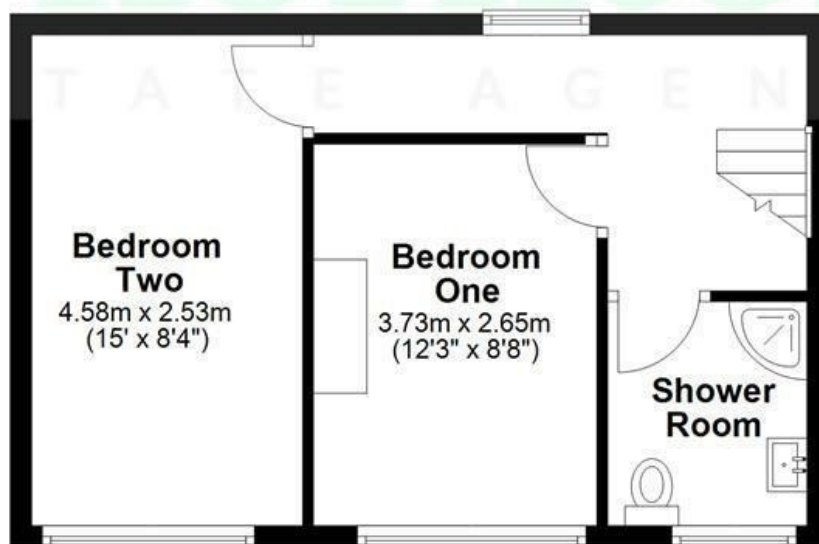
This two-bedroom mid-through terraced property has a lovely rear garden benefitting from a westerly aspect. The property is conveniently situated within a short distance of Huddersfield Town Centre, with its rail links and Huddersfield University. It is only a short drive from the M62 motorway network. It offers ideal first time buyer or investment accommodation and comprises an entrance hall, good-sized living room, kitchen and cellar. On the first floor are two bedrooms and a stylish shower room. The property benefits from a gas-fired central heating system and is predominantly uPVC double-glazed. Externally, there is a fenced garden to the rear, security lighting and a stone flagged area providing off-road parking. The rear garden benefits from a westerly aspect.



Ground Floor



First Floor



All Measurements are approximate and for display purposes only
Plan produced using PlanUp.

Hill Top Road, Paddock Huddersfield,

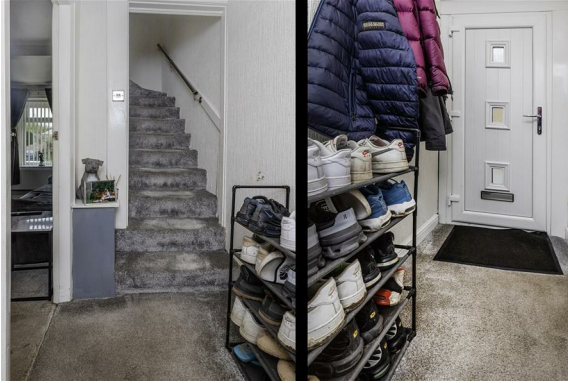
Details



Entrance Hall

A uPVC door with double-glazed inserts opens to the entrance hall, where there are hanging hooks for coat storage, an exposed beam to the ceiling and a ceiling light point.

A staircase rises to the first floor landing and a timber door gives access to the living room.



Living Room

This room has a dual aspect, with uPVC windows to the front and rear elevations. It has beams to the ceiling, a ceiling light point and a radiator. The focal point of the room is an electric fire, set to a limestone hearth and surround. Access can be gained to a keep cellar.



Keep Cellar

The cellar has power and light.

Hill Top Road, Paddock Huddersfield,

Details



Kitchen

The kitchen has a range of modern high-gloss wall and base cupboards, drawers, roll-edge worktops extending to form a breakfast bar and glass splashbacks. There is a one-and-a-half bowl stainless steel sink with mixer tap. Integrated appliances include a five-ring gas hob and oven with overlying filter hood. There is space and plumbing for an automatic washing machine and space for a freestanding fridge freezer. This room is home to the Ideal central heating boiler. There is vinyl style flooring, exposed beams to the ceiling, a radiator and a uPVC double-glazed window to the front elevation. A useful storage cupboard has been incorporated in the chimney breast. A uPVC door with double-glazed inserts gives access to the rear garden.



First Floor Landing

From the entrance hall, a staircase leads up to the first floor landing, which has access to loft space and two ceiling lights. A uPVC window allows natural light from the rear elevation.



Hill Top Road, Paddock Huddersfield,

Details



Bedroom One

This double bedroom is positioned at the front of the property and has two uPVC double-glazed windows, a ceiling light point and a radiator. There is useful shelving to one alcove.



Bedroom Two

This double bedroom is positioned at the front of the property and has uPVC double-glazed windows, a ceiling light point and a radiator.



Hill Top Road, Paddock Huddersfield,

Details



Shower Room

This room has a modern white suite comprising a low-level WC, vanity hand basin with mixer tap and drawers beneath, a corner shower cubicle with a shower screen, home to a waterfall style mains fed shower. There is tiling to the walls, a ceiling light point, an extractor fan, an LED vanity mirror, a toothbrush charging point and a ladder style heated towel rail. A uPVC double-glazed window allows natural light from the front elevation.



External Details

At the rear of the property, there is a low-maintenance, fenced garden area, outside security lighting and a stone flagged area providing off-road parking for the property. The rear garden benefits from a westerly aspect.



Tenure

The vendor informs us the property is Freehold.

Hill Top Road, Paddock Huddersfield,

Directions

