



Amersham Road, SE14 | £1,775 Per Calendar
Month

02077819888
brockley@pedderproperty.com

pedder
We live local

In General

- One double bedroom
- Modern bathroom suite
- Open plan kitchen/reception area
- Private terrace
- Double glazed windows
- Fully re-decorated throughout
- Great location
- Close to excellent transport links

In Detail

A spacious ground floor flat to let on Amersham Road in the heart of New Cross.

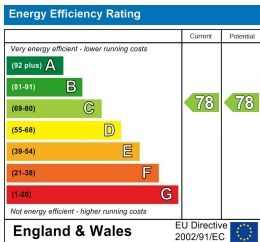
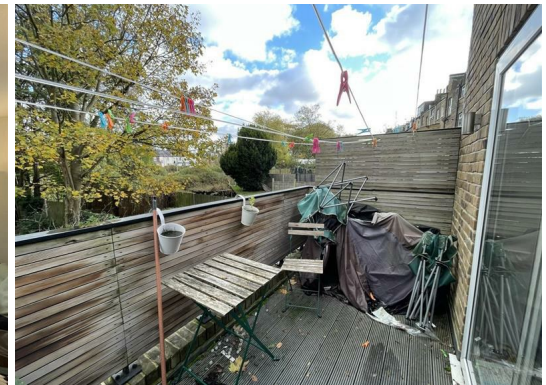
This apartment comprises one double bedroom, a modern bathroom suite, a kitchen/reception room and a private terrace.

Further benefits include double glazed windows, fully re-decorated throughout, great location and close to excellent transport links.

The property is located in close proximity to New Cross and New Cross Gate stations offering links into London Bridge, Charing Cross, Waterloo and many other locations.

It is also just a short walk to various local amenities including a variety of restaurants, coffee shops and cafes.

EPC: C | Council Tax Band: B | Unfurnished | Available now | HD: £409.61 | SD: £2,048.07



Pedder Property Ltd trading as Pedder for themselves and for the vendor/landlord of this property whose agents they are, give notice that (1) these particulars do not constitute any part of an offer or contract, (2) all statements contained within these particulars are made without responsibility on the part of Pedder or the vendor/landlord, (3) whilst made in good faith, none of the statements contained within these particulars are to be relied upon as a statement of representation or fact, (4) any intending purchaser/tenant must satisfy him/herself by inspection or otherwise as to the correctness of each of the statements contained within these particulars, (5) the vendor/landlord does not make or give either Pedder or any person in their employment any authority to make or give representation or warranty whatsoever in relation to this property.

