



Beaufort Close, SW15

£1,195,000

Dexters



Beaufort Close, SW15

This well-proportioned family home offers over 1,600 sq ft of versatile living space in a stunning gated development. The House is arranged across three floors, with a private garden and excellent potential to update and personalise.

The lower ground floor features a spacious kitchen and dining area, along with an additional office/study and access to the garden. On the raised ground floor, there is a bright reception room ideal for entertaining, alongside a generous double bedroom and guest WC. The first floor comprises three further bedrooms, including a principal bedroom, and two bathrooms, making it well suited for growing families.

Externally, the property benefits from a private garden, offering a mix of patio and planted areas.

Beaufort Close is a quiet residential setting in Putney, conveniently located for the green open spaces of Putney Heath and Richmond Park. Transport links are excellent, with easy access to Putney mainline station (National Rail) and East Putney Underground station (District Line), providing swift connections into Central London. There are also a number of well-regarded schools, local shops, and amenities nearby.

Features

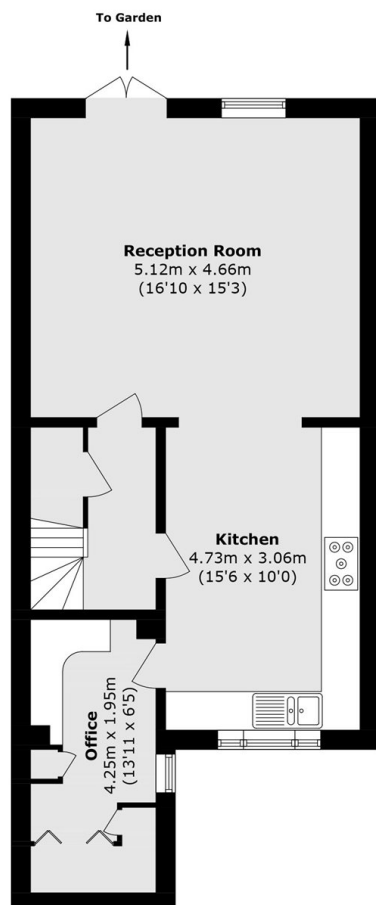
- Four Bedrooms
- Two Receptions
- Chain Free
- Private Garden
- Off-Street Parking
- Gated Development



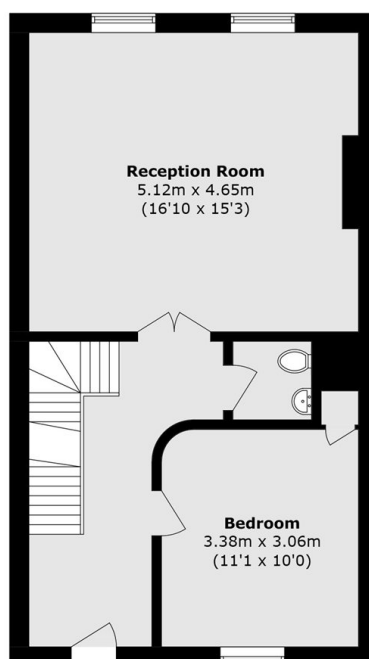




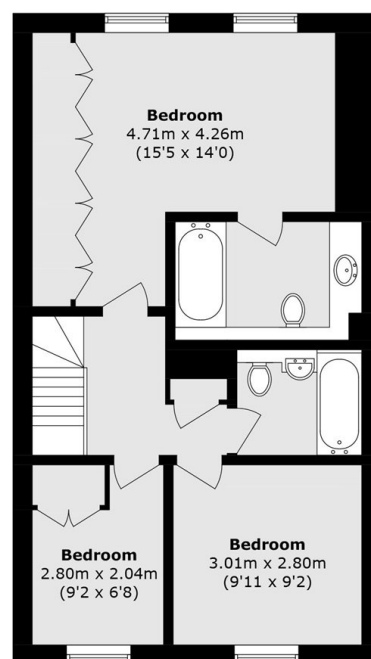
Beaufort Close, London, SW15



Lower Ground Floor



Ground Floor



First Floor

Total area (approx.): 151.3 sq. m (1628.5 sq. ft)