



£875,000

Rosebank Road, Hanwell, W7



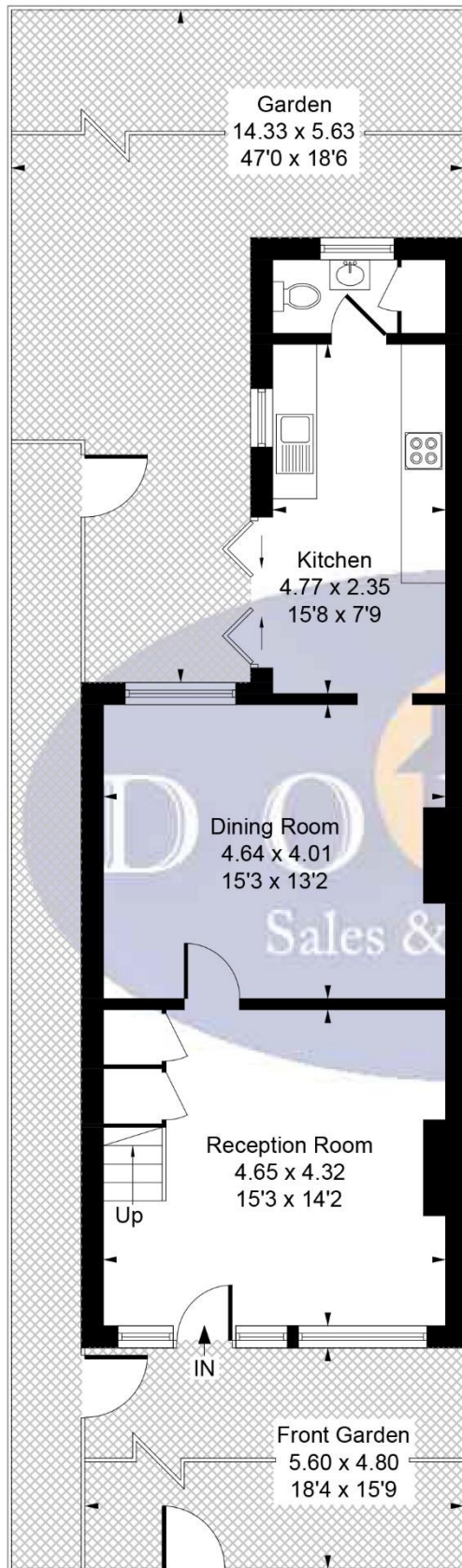
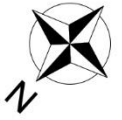
- 3 Double Bedrooms
- South Facing Garden
- 1,356 Sq Ft
- Semi Detached
- Useful Side Access
- Chain Free

Located in the heart of the fashionable Old Hanwell enclave, this stunning chain free 3 bedroom Victorian semi-detached home is in excellent condition and extended to an impeccable standard. The bright, high-ceilinged interior features a spacious reception with a period fireplace, leading to a full-width dining room and a sleek kitchen with utility room, underfloor heating and bi-fold doors. The upper floors offer two double bedrooms and a contemporary bathroom, crowned by a 'Real Homes' magazine-featured loft suite complete with bespoke storage and a luxury designer wet room. Outside boasts a south-facing walled garden providing a private sun-trap, while the home's integrity is bolstered by Banham security, Nest smart systems, and double-glazed sash windows with custom shutters. Perfectly positioned for families and commuters alike, Rosebank Road is moments from the highly-regarded St Mark's Primary School, scenic canal walks, and local artisan pubs. With the Elizabeth Line at Hanwell and the Piccadilly Line at Boston Manor both within easy reach, this residence offers a sophisticated blend of period charm and modern connectivity.

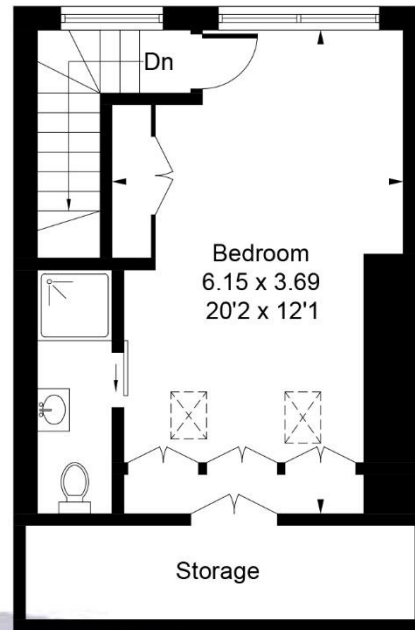


Rosebank Road, Hanwell, London, W7 2EW

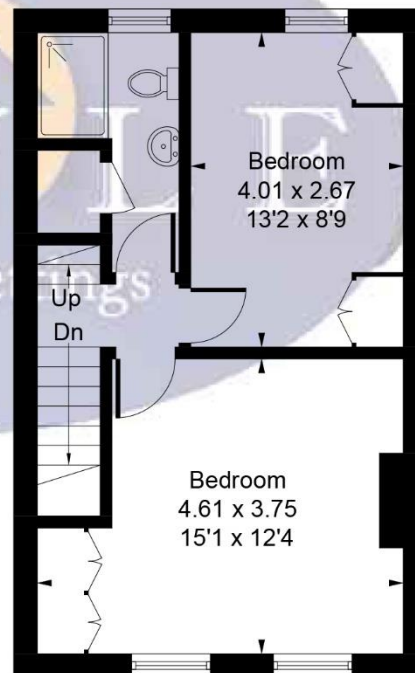
Approximate Gross Internal Area
126.05 sq m / 1356 sq ft



Ground Floor
54.09 sq m / 582 sq ft



Second Floor
35.23 sq m / 379 sq ft



First Floor
36.73 sq m / 395 sq ft

Whilst every attempt has been made to ensure the accuracy of the floor plan contained here, measurements of doors, windows, rooms and any other items are approximate and no responsibility is taken for any error, omission, or mis-statement.

This plan is for illustrative purposes only and should be used as such by any prospective purchaser.

© Vizion Property Marketing Produced for Doyle Sales & Lettings

Map



VIEWING BY APPOINTMENT WITH AGENTS DOYLE SALES & LETTINGS

11 Broadway Buildings, Boston Rd, Hanwell, London, W7 3TT T: 020 8840 0171 E: info@doylesalesandlettings.co.uk W: www.doylesalesandlettings.co.uk

General: While we endeavour to make our sales particulars fair, accurate and reliable, they are only a general guide to the property and, accordingly, if there is any point which is of particular importance to you, please contact the office and we will be pleased to check the position for you, especially if you are contemplating travelling some distance to view the property.

Measurements: These approximate room sizes are only intended as general guidance. You must verify the dimensions carefully before ordering carpets or any built-in furniture.

Services: Please note we have not tested the services or any of the equipment or appliances in this property, accordingly we strongly advise prospective buyers to commission their own survey or service reports before finalizing their offer to purchase.

THESE PARTICULARS ARE ISSUED IN GOOD FAITH BUT DO NOT CONSTITUTE REPRESENTATIONS OF FACT OR FORM PART OF ANY OFFER OR CONTRACT. THE MATTERS REFERRED TO IN THESE PARTICULARS SHOULD BE INDEPENDENTLY VERIFIED BY PROSPECTIVE BUYERS OR TENANTS. NEITHER DOYLE SALES & LETTINGS NOR ANY OF ITS EMPLOYEES OR AGENTS HAS ANY AUTHORITY TO MAKE OR GIVE ANY REPRESENTATION OR WARRANTY WHATEVER IN RELATION TO THIS PROPERTY.

YOUR HOME IS AT RISK IF YOU DO NOT KEEP UP REPAYMENTS ON A MORTGAGE OR OTHER LOAN SECURED ON IT.

Written quotations available on request. All loans secured on property. Life assurance is usually required.

EPC Rating D

