



# High Street, Pershore

Asking Price: £235,000

- Two bedroom, three storey cottage
- Lounge with feature fireplace
- Breakfast kitchen with shaker style units
- Bathroom with four piece suite
- Bedroom one on the first floor
- Bedroom two on the second floor
- South- Westerly rear garden with zoned seating areas
- Located in the heart of Pershore
- Parking available to rent within close proximity

**Nigel Poole  
& Partners**

# High Street

Pershore

Asking Price: £235,000

**\*\*A TWO-BEDROOM THREE STORY PRE-1900 PERIOD COTTAGE WITH SOUTH-WESTERLY REAR GARDEN\*\*** A quaint and inviting lounge with lovely feature fireplace; breakfast kitchen fitted with shaker style units; bathroom with four-piece suite; bedroom one on the first floor with a spacious landing and views to Pershore Abbey; bedroom two on the second floor with eaves storage space. South-Westerly Garden with patio seating areas. Parking is available to rent within close proximity to the property. Within walking distance to Pershore town centre, steeped in history with an array of independent retailers, restaurants, leisure facilities, schooling, medical facilities, Pershore Abbey and park. Excellent transport connections with easy access to the motorway, Pershore train station and Worcestershire Parkway station.

## Front

Upvc entrance door into the lounge.

### Lounge 12' 3" x 10' 2" (3.73m x 3.10m) Max

Double glazed window to the front aspect. Feature fireplace with oak mantle and log burning style fireplace. Down lights; radiator; wood effect flooring; door to the kitchen/ dining room.



### Kitchen/ Dining Room 15' 1" x 11' 5" (4.59m x 3.48m) Max

Double glazed window to the rear aspect and double-glazed door into the garden. A range of wall and base units with worktop; stainless steel one and a half bowl sink with drainer and mixer tap. Space for a gas oven with extractor over, fridge/ freezer; space and plumbing for a washing machine. Pendant and down light fittings; radiator; tiled flooring. Stairs rising to the first floor; door to the bathroom.

### Bathroom 7' 5" x 7' 2" (2.26m x 2.18m)

Double glazed obscure and clear windows to the rear aspect. Panelled bath with mixer tap; corner shower cubicle with mains fed mixer shower and glass screen with door; pedestal hand wash basin with mixer tap; low level w.c. Part tiled walls; down lights; radiator; tiled flooring.

### Landing 11' 7" x 6' 7" (3.53m x 2.01m) Max

Double glazed window to the rear aspect with views to Pershore Abbey. Door to bedroom one; stairs rising to the second-floor bedroom; understairs storage cupboard housing the gas-fired 'Vaillant' combi-boiler. Down lights; radiator.

### Bedroom One 12' 4" x 10' 2" (3.76m x 3.10m)

Double glazed window to the front aspect. Feature fireplace surround; down lights; radiator.



### Bedroom Two 12' 3" x 8' 6" (3.73m x 2.59m) Min

Double glazed Velux window to the rear aspect. Eaves storage space; wall light; radiator.

## South- Westerly Rear Garden

South- Westerly rear garden with patio seating areas; zoned areas with lawn and gravel; storage shed.



## About Pershore

Pershore is renowned for its outstanding Georgian buildings and the beautiful Pershore Abbey and Abbey park. The town's tranquillity is helped by being surrounded by beautiful countryside and picturesque villages – including the wonderful Avon Meadow Community Wetlands – and is a haven for cyclists and ramblers. Pershore is a town renowned for its independent shops which offer the discerning shopper an extensive range of purchases. There are also many specialist shops, welcoming pubs and restaurants, along with the monthly 'Broad Street market.' During August visitors will be able to purchase the town's most famous fruit – the Pershore plum – that is also celebrated during a month-long award-winning festival.



Tenure: Freehold

Council Tax Band: B

### Broadband and Mobile Information

To check broadband speeds and mobile coverage for this property please visit: <https://www.ofcom.org.uk/phones-telecoms-and-internet/advice-for-consumers/advice/ofcom-checker> and enter postcode WR10 1EQ

### Identity Checks

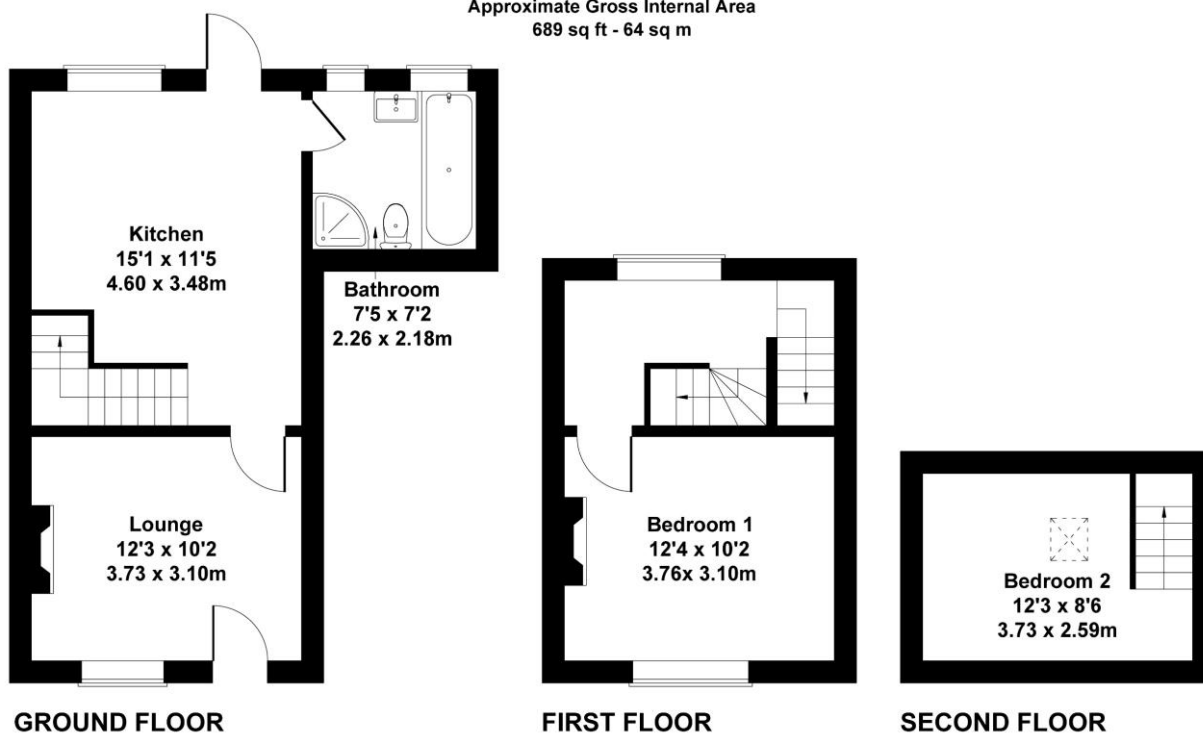
Estate Agents are required by law to conduct anti-money laundering checks on all those buying a property. We have partnered with a third part supplier to undertake these to ensure checks are HMRC compliant. The cost of these checks is £60 including VAT and is non-refundable. The charge covers the cost of obtaining relevant data, any manual checks and monitoring which may be required. This fee will need to be paid, and checks completed in advance of the issuing of a memorandum of sale.

### Disclaimer

All measurements are approximate and for general guidance only. Whilst every attempt has been made to ensure accuracy, they must not be relied on. The fixtures, fittings and appliances referred to have not been tested and therefore no guarantee can be given and that they are in working order. Internal photographs are reproduced for general information, and it must not be inferred that any item shown is included with the property. Whilst we carry out due diligence before launching a property to the market and endeavour to provide accurate information, buyers are advised to conduct their own due diligence. Our information is presented to the best of our knowledge and should not solely be relied upon when making purchasing decisions. The responsibility for verifying aspects such as flood risk, easements, covenants and other property related details rests with the buyer.

## 130 High Street, Pershore, WR10 1AA

Approximate Gross Internal Area  
689 sq ft - 64 sq m



Not to Scale. Produced by The Plan Portal 2026  
For Illustrative Purposes Only.

EPC to follow

#### MISREPRESENTATION ACT 1991

These particulars do not constitute, nor constitute part of, an offer or contract. Whilst every care is taken to ensure accuracy, no responsibility for errors or misdescription is accepted. Any intending purchaser must satisfy himself by inspection or otherwise as to the correctness of each of the statements contained in these particulars. The vendor does not make or give to Nigel Poole and Hancox as Agents, nor any employees of the Agents any authority to make or give representation or warranty whatever in relation to the property.

N446 Ravensworth 01670 713330

