



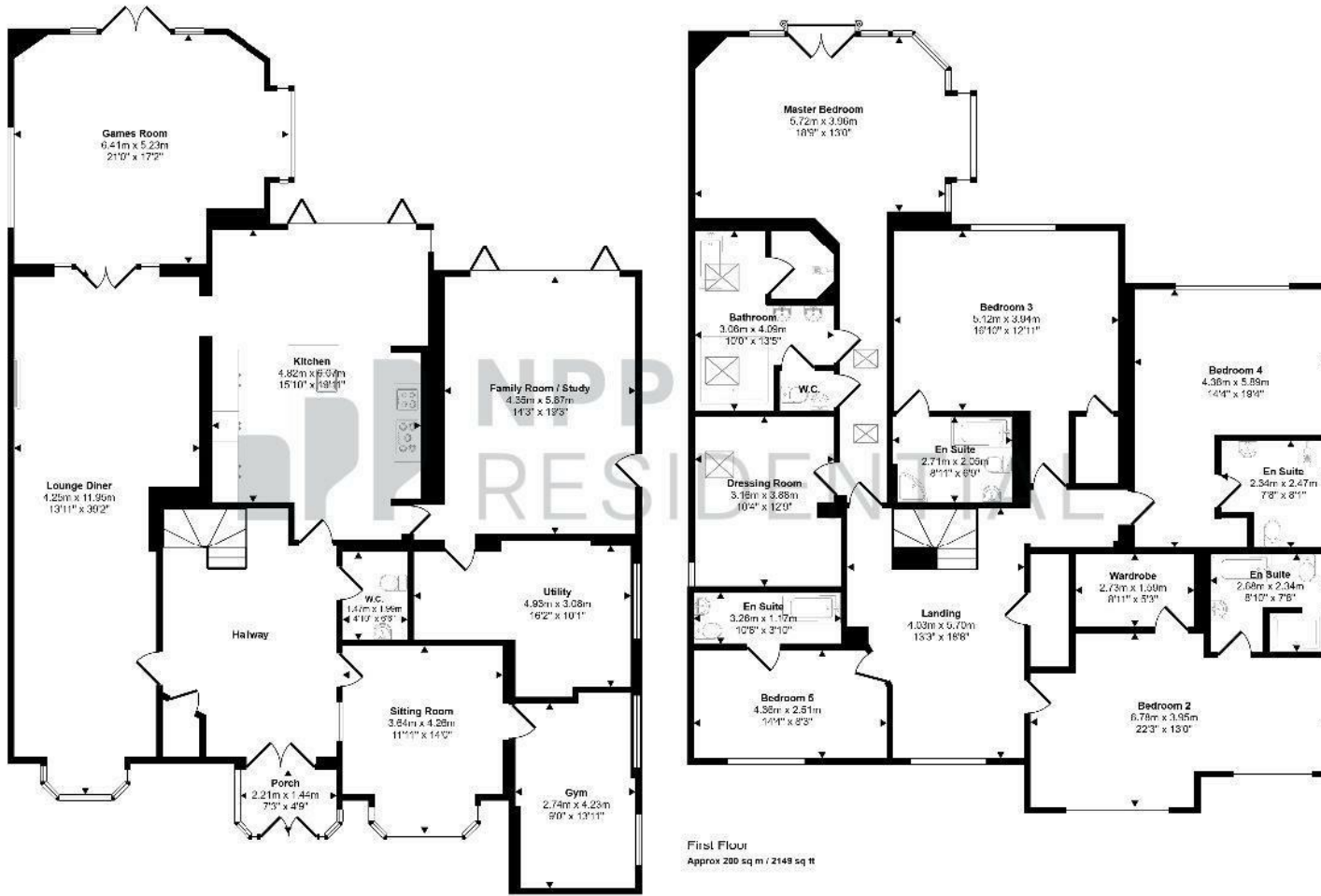
**5 Bed  
House - Detached  
located  
in Whitefield**

**Offers Over £1,500,000**



 **NPP  
RESIDENTIAL**

Approx Gross Internal Area  
410 sq m / 4418 sq ft



## DIRECTIONS

## CONTACT

22 Lloyd Street  
Manchester  
M2 5WA

E: [info@nppresidential.co.uk](mailto:info@nppresidential.co.uk)  
T: 0161 639 0059  
<https://nppresidential.co.uk/>

This template is only for illustrative purposes and is not to scale. Measurements of rooms, doors, windows, and any items are approximate and no responsibility is taken for any error, omission or mis-statement. Icons of items such as bathroom fixtures are representations only and may not look like the real items. Made with Made Simple 2020.

EPC Rating:  
Council Tax Band: H

Energy Efficiency Rating		Current	Potential
Very energy efficient - lower running costs			
(92 plus)	A		
(81-91)	B		
(69-80)	C		
(55-68)	D		
(39-54)	E		
(21-38)	F		
(1-20)	G		
Not energy efficient - higher running costs			
England & Wales		EU Directive 2002/91/EC	

