

AVAILABLE



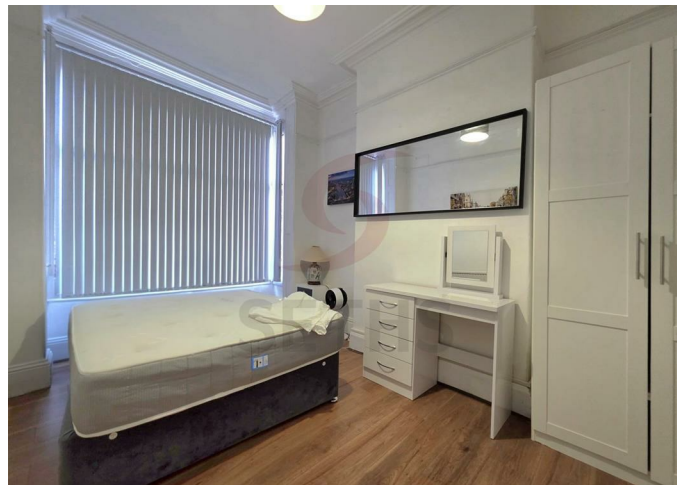
House - End Terrace

EVINGTON ROAD LEICESTER LE2 1HF

£2,000 Per
Month

FEATURES

- 6 Bedroom House
- Spacious Dining and Kitchen Area
- 3 Shower Rooms
- Close to Local Shops
- Furnished
- Basement
- Excellent Location
- Easy Transport Links



 **SETHS**

6 Bedroom House - End Terrace located in Leicester

*** CALLING ALL COMPANY LETS ***

Seths proudly presents this substantial six-bedroom period terrace property situated on Evington Road, ideally positioned for easy access to local amenities, Victoria Park and Leicester Train Station.

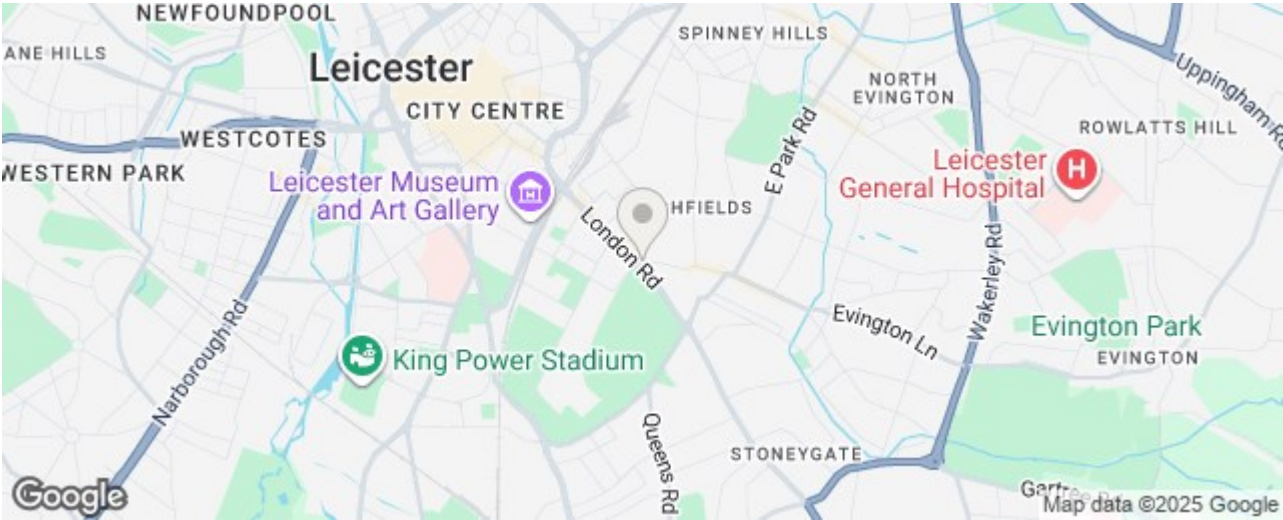
Upon entering, the property offers a spacious entrance hall leading to a downstairs bedroom, spacious reception rooms and open plan kitchen and dining room. The kitchen benefits for 2 gas hobs and 2 sinks alongside fitted wall and base units.

To the first floor, the landing provides access to three well-proportioned bedrooms, a family bathroom, and a separate shower room. The second floor offers a further two bedrooms, including one benefiting from its own en-suite shower room.

Externally, the property features a low-maintenance rear patio garden, perfect for outdoor seating.

This sizeable home is ideal for large families seeking ample living space in a highly convenient location.

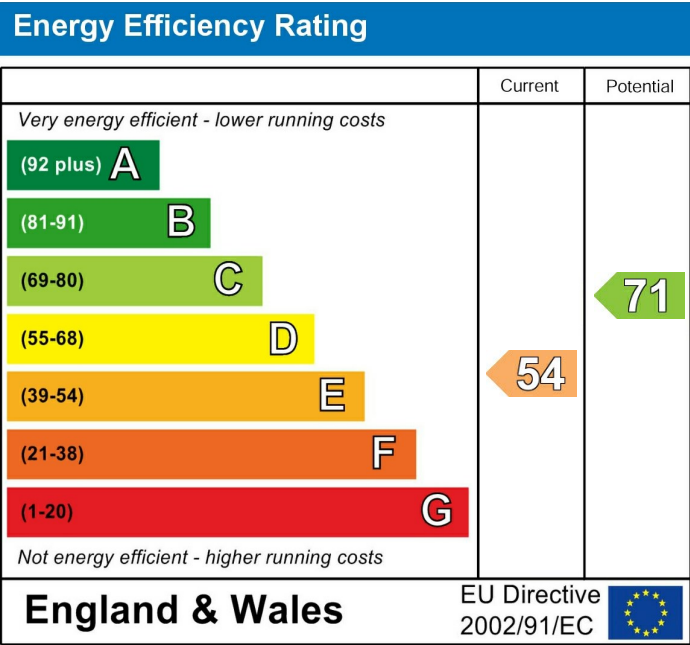
Rent: £2000PCM
Security Deposit: £2305
Tenancy Length: 6 Months
Council Tax Band: C
Pets may be considered at the landlord's discretion and will be subject to a higher rent.



Call us on
0116 266 9977

let@seths.co.uk
www.seths.co.uk

Council Tax Band
C



Agents Note: Whilst every care has been taken to prepare these particulars, they are for guidance purposes only. All measurements are approximate and are for general guidance purposes only and whilst every care has been taken to ensure their accuracy, they should not be relied upon and potential buyers are advised to recheck the measurements.

