



Price
£340,000

Freehold

2x  1x  1x 

**Shearwater Avenue,
Whitstable, Kent, CT5**

Wards
Helping you move forwards



Main features

- Generous front and rear garden
- Driveway for 2 vehicles
- Situated on a generous plot
- A smart new fitted kitchen is complemented by a modern shower room
- No onward chain and ready to move in straight away

Accommodation

GROUND FLOOR

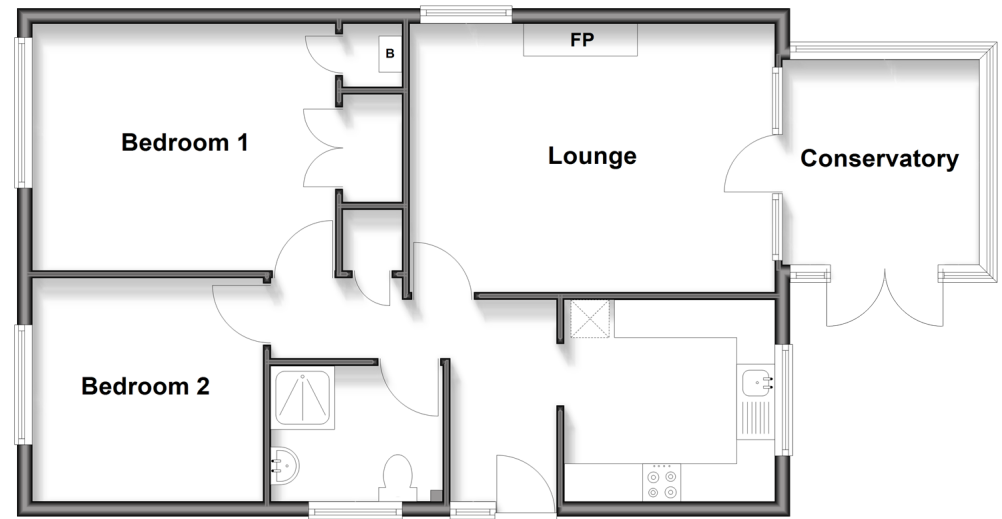
- Entrance
- Lounge: 16'3 x 11'7 (4.96m x 3.53m)
- Kitchen: 9'0 x 8'6 (2.75m x 2.59m)
- Bedroom 1 : 13'0 x 10'7 (3.97m x 3.23m)
- Bedroom 2 : 10'6 x 9'8 (3.20m x 2.95m)
- Bathroom
- Conservatory: 9'8 x 7'6 (2.95m x 2.29m)

OUTSIDE

- Driveway
- Front Garden
- Rear Garden

Ground Floor

Approx. 68.9 sq. metres (742.0 sq. feet)



Call Whitstable - 01227 772272 ■ wardsokent.co.uk

■ Legal advice should be taken to verify fixtures/fittings, planning, alterations and/or lease details

■ Appliances & services are untested, dimensions are approximate and floor plans are not to scale



12026893/20260207/AR/CJ