



Portobello Road, W11

£900,000

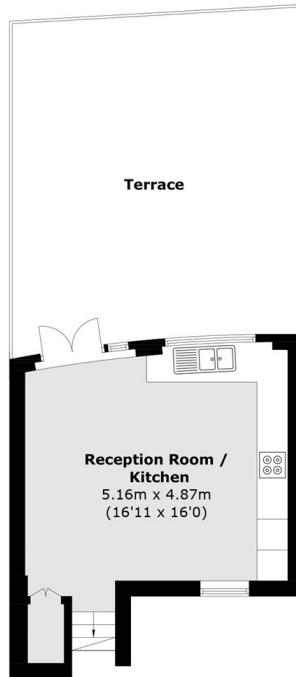
A beautifully presented and stylish first floor flat, with a large West facing roof terrace in a Victorian building. With two spacious double bedrooms and an open plan kitchen and reception room, this is an ideal purchase for anyone that loves al-fresco entertaining and appreciates a popular and well-loved Notting Hill location. Offers in Excess of £900,00.

Portobello Road is one of London's most iconic spots, known for its vibrant market, boutiques, and restaurants. Stylish Westbourne Grove, nearby Underground stations and the green spaces of Hyde Park are all within easy reach.

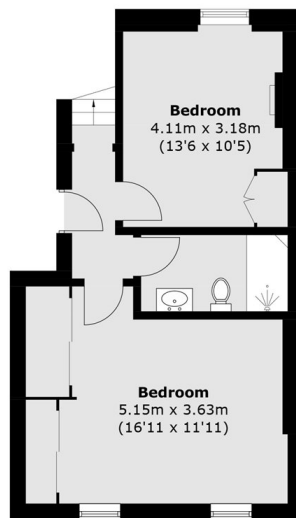
Features

Offers In Excess Of £900,000
Two Double Bedrooms
Open Plan
West Facing Terrace
First Floor
Stylishly Refurbished

Portobello Road, London, W11



Half Floor Landing



First Floor

Total area (approx.): 67.4 sq. m (725.5 sq. ft)
Terrace area (approx.): 35.5 sq. m (382.1 sq. ft)