



The Pantiles, Finchley Road, Temple Fortune, NW11  
Leasehold  
£425,000



800 Finchley Road, Hampstead Garden Suburb, London, NW11 7TJ  
020 8458 5000  
sales@litchfields.com  
www.litchfields.com

Offices also in Highgate

A second floor flat set in this popular Grade II Listed purpose built designed by J B F Cowper in 1934 situated within the heart of Temple Fortunes ample amenities. The property, which offers 689 sq ft, has been refurbished to an exacting standard comprising 2 double bedrooms, a large lounge, a fitted kitchen and shower room. Viewing of this fine chain free property is advised.



2



1



1

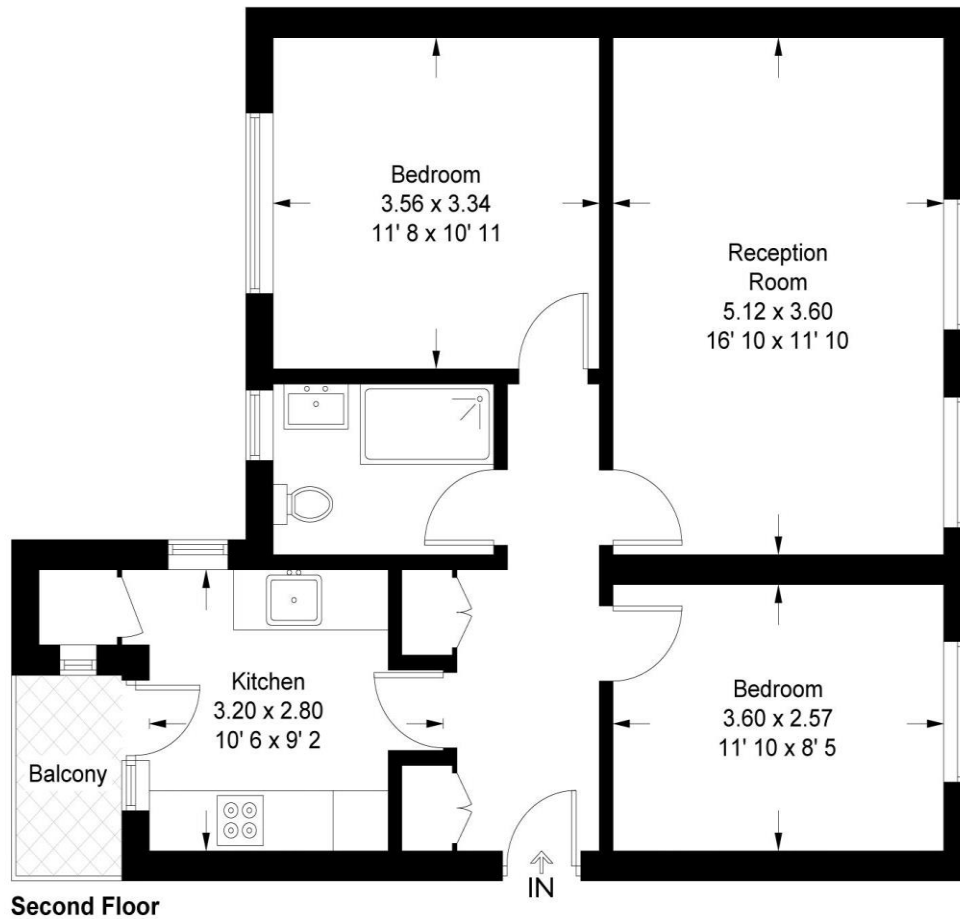
EPC



2 double bedrooms | Lounge | Kitchen | Shower room | In the heart of Temple Fortune  
| Brand newly refurbished

## The Pantiles

Approximate Gross Internal Area = 689 sq ft / 64 sq m



Not to scale, for guidance only and must not be relied upon as a statement of fact  
All measurements and areas are approximate only and have been prepared in  
accordance with the current edition of the RICS Code of Measuring Practice

For similar properties please visit our website [www.litchfields.com](http://www.litchfields.com)

Or call us on 0208 458 8000