



Astral House
Regency Place, SW1P

CHESTERTONS





Bright and spacious one bedroom apartment located in a charming mansion block. The property comprises a large living area, separate kitchen, small balcony, ample storage and spacious bedroom.

- Spacious Lounge
- Balcony
- Great Location
- Furnished

£2,500 pcm

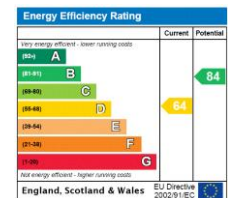
Additional tenant charges apply (fees apply to non-AST tenancies only)

Tenancy Agreement Fee: £300

References per Tenant/Guarantor: £60

Inventory check (approx. £100 – £250 inc. VAT)

chestertons.co.uk/property-to-rent/applicable-fees



Minimum Term: 6 months
Deposit Required: £2,884.62
Local Authority: City of Westminster
Council Tax Band: E
EPC Rating: D
Furnished

Chestertons Westminster & Pimlico Lettings

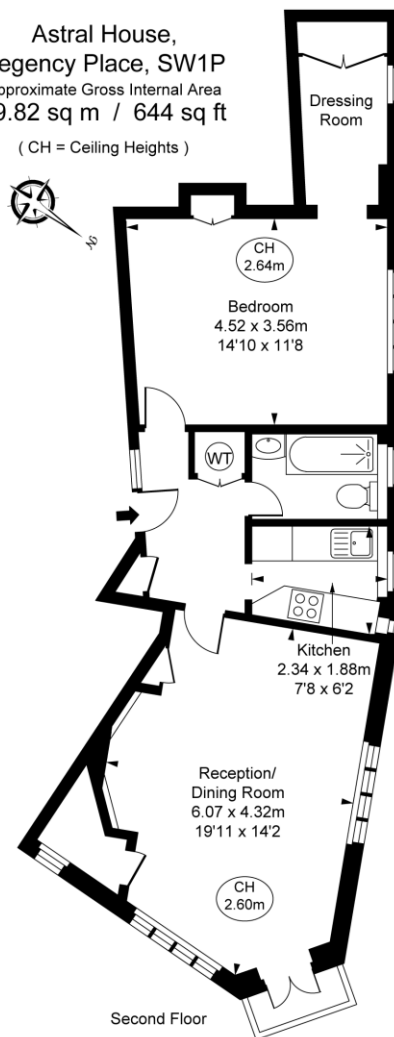
105 Wilton Road
 London
 SW1V 1DZ

westminster@chestertons.co.uk

02030408220

chestertons.co.uk

Astral House,
Regency Place, SW1P
Approximate Gross Internal Area
59.82 sq m / 644 sq ft
(CH = Ceiling Heights)



This plan is not to scale. It is for guidance and not for valuation purposes.
All measurements and areas are approximate only, and have been prepared in accordance with the current edition of the RICS Code of Measuring Practice.
© Fulham Performance

Chesterton Global Ltd trading as Chestertons for themselves and for the vendor of this property whose agents they are, give notice that (i) these particulars do not constitute any part of an offer or contract, (ii) all statements contained within these particulars are made without responsibility on the part of Chestertons or the vendor, (iii) whilst made in good faith, none of the statements contained within these particulars are to be relied upon as a statement or representation of fact, (iv) any intending purchasers must satisfy themselves by inspection or otherwise as to the correctness of each of the statements contained within these particulars, (v) the vendor does not make or give either Chestertons or any person in their employment any authority to make or give representation or warranty whatsoever in relation to this property. Wide angle lenses may be used. ©Copyright Chestertons | Chesterton Global Ltd | Registered Office 40 Connaught Street, Hyde Park, London W2 2AB Registered Company Number 05334580.

