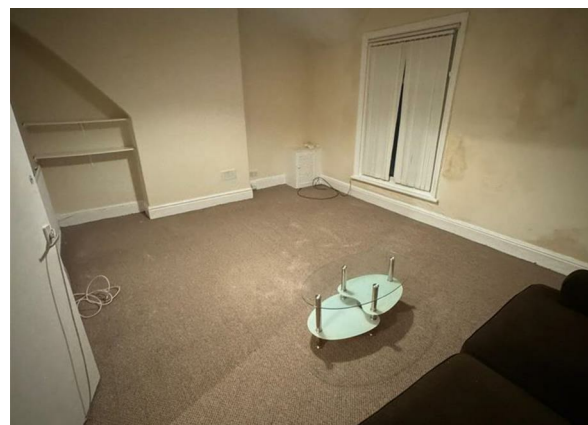
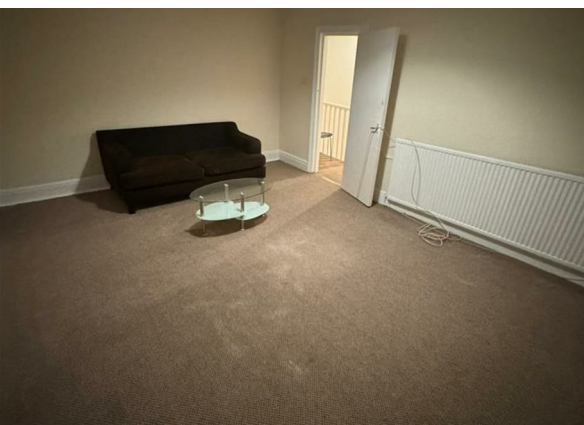


Clarendon Road, Manchester, M16 0EH

£1,450 Per Month

Council Tax Band:



*** 3 BEDROOM FLAT TO RENT IN M16 FOR £1450 ***

Nestled in the vibrant area of Clarendon Road, Manchester, this charming maisonette offers a delightful living experience. With two well-proportioned bedrooms, this property is perfect for small families, couples, or individuals seeking a comfortable home. The inviting reception room provides a warm and welcoming space, ideal for relaxation or entertaining guests.

The maisonette features a thoughtfully designed bathroom, ensuring convenience and privacy for its residents. Although the property does not specify its square footage, the layout is designed to maximise space and functionality, making it a practical choice for modern living.

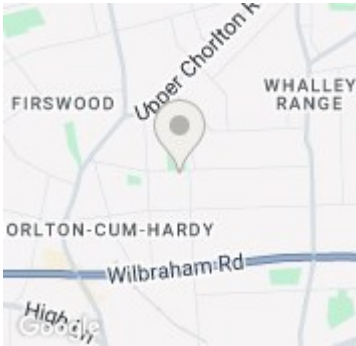
Located in a lively neighbourhood, residents will enjoy easy access to local amenities, including shops, cafes, and parks, all within a short distance. The excellent transport links in the area make commuting to the city centre and beyond a breeze, enhancing the appeal of this lovely home.

This maisonette on Clarendon Road presents an excellent opportunity for those looking to settle in a dynamic part of Manchester. With its combination of comfort, convenience, and character, it is a property not to be missed. Contact us today to not miss this wonderful opportunity.

Open House Estate Agents
61 Kingsway, Manchester
M19 2LL
0161 225 6926



Open House South East Manchester



Energy Efficiency Rating		
	Current	Potential
Very energy efficient - lower running costs		
(92 plus) A		
(81-91) B		
(69-80) C		
(55-68) D		
(39-54) E		
(21-38) F		
(1-20) G		
Not energy efficient - higher running costs		
England & Wales	EU Directive 2002/91/EC	