



## Offley Road, SW9

£450,000

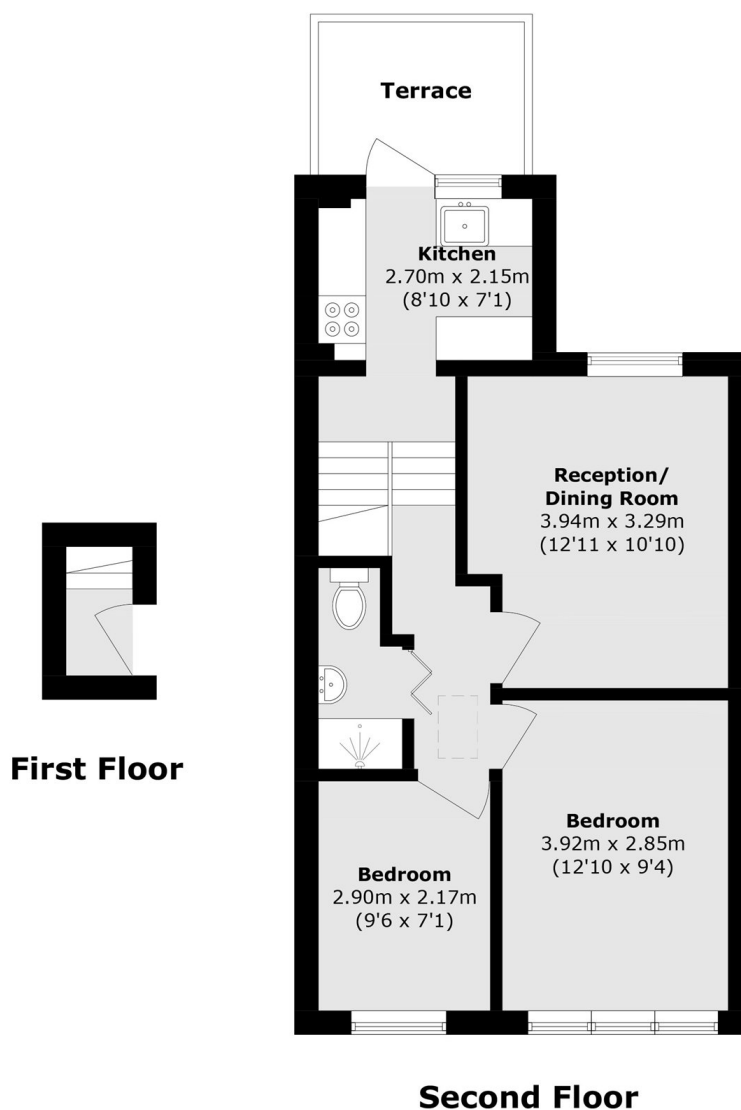
A fantastic two-bedroom second-floor Victorian conversion presented in excellent condition throughout. Flooded with natural light, the property features a spacious reception room and a separate kitchen with direct access to a west-facing balcony. Additional benefits include a share of freehold and the property is offered to the market with no onward chain.

Conveniently located just a short walk from the The Oval cricket ground and Oval Underground Station (Northern line), the property is also well connected by numerous nearby bus routes. Vauxhall Station (Victoria line and National Rail services) is within easy walking distance. The area offers a great selection of local pubs, restaurants, and cafés, while the green open spaces of Kennington Park are also close by.

### Features

- Two Bedrooms
- West Facing Balcony
- Victorian Conversion
- Share of Freehold
- Excellent Location
- Character Features

# Offley Road, London, SW9



Total area (approx.): 48.8 sq. m (525.2 sq. ft)  
Terrace (approx.): 5.0 sq. m (53.9 sq. ft)