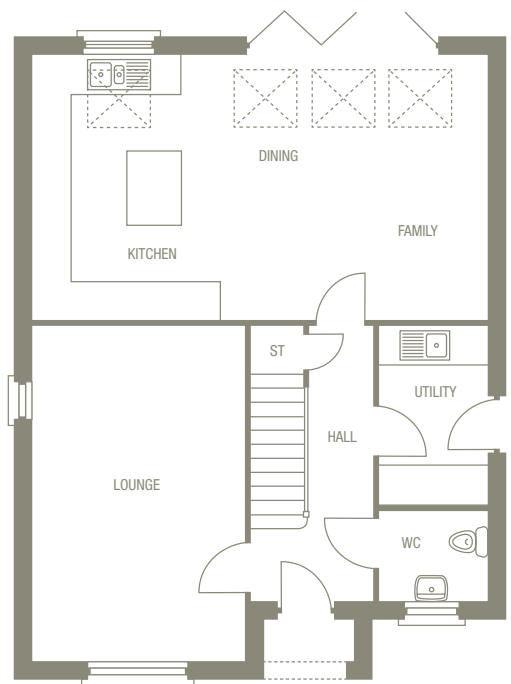


The Cranleigh

4 bedroom detached home with garage.

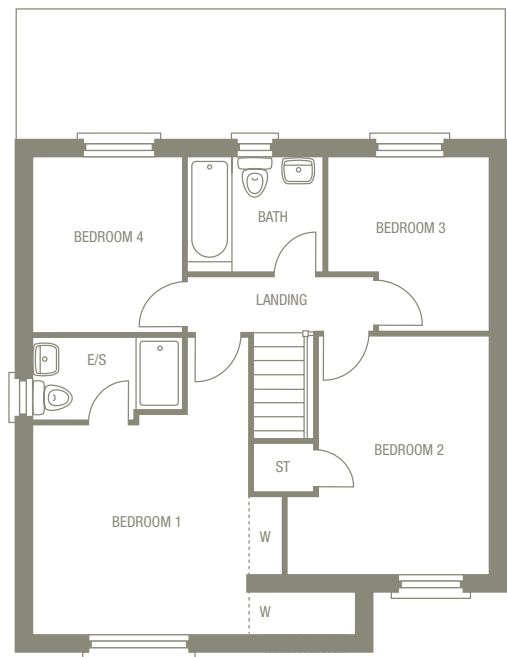


Outstanding light and space are the hallmarks of The Cranleigh. Here the open-plan kitchen/family room presents real 'wow' factor with a vaulted ceiling and a series of skylight windows flooding the space with natural light. With 4 generous bedrooms, including a master bedroom with its own en-suite, you'll soon find yourself right at home with the Cranleigh.



Ground Floor

Room	Size	
Lounge	3450 x 5450mm	11'4" x 17'11"
Kitchen/Family/ Dining	7430 x 4275mm	24'5" x 14'0"
Utility	1750 x 2875 mm	5'9" x 9'5"
WC/Cloaks	1750 x 1425mm	5'9" x 4'9"



First Floor

Room	Size	
Bedroom 1	5230* x 4860*mm	17'2"* x 15'11"*
En-suite	2425 x 1325mm	7'11" x 4'4"
Bedroom 2	3115* x 3860*mm	10'3"* x 12'8"*
Bedroom 3	2605* x 2825*mm	8'7"* x 9'3"*
Bedroom 4	2425 x 2860mm	7'11" x 9'5"
Bathroom	2225 x 1850mm	7'4" x 6'1"

1,358 total sq ft

*Denotes maximum room dimensions.
This is a computer generated image of The Cranleigh, elevation treatment may vary. All internal images are indicative of a Morris house type. Room sizes are approximate. Plots may be handed and any garages may be single or double. Kitchen and bathroom layouts are indicative. These plans are correct at time of going to press, but may be subject to change during construction. Please ensure that you check for specific plot details.

