



Rhyl Street, NW5

£550,000

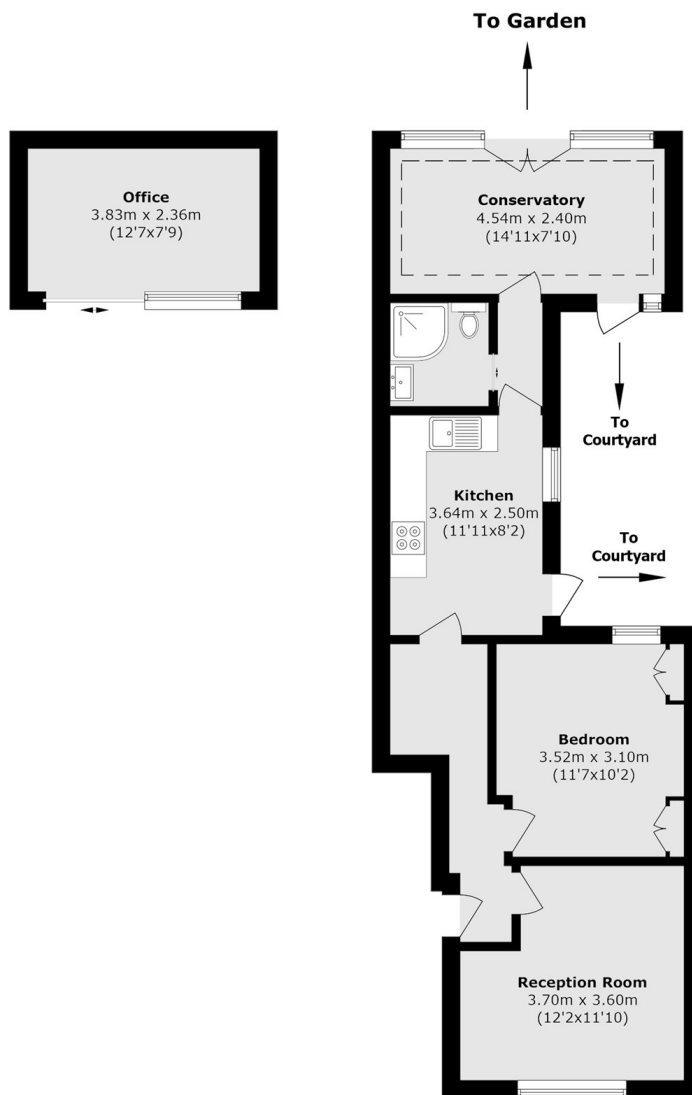
A one double bedroom garden flat with a separate garden office. The apartment has a modern kitchen, a separate reception room and a conservatory which leads to a private garden.

Rhyl Street is conveniently positioned close to good transport links such as Chalk Farm underground station on the Northern line, as well as Kentish Town West and Gospel Oak overground, all located close by.

Features

- One Double Bedroom
- One Bathroom
- Private Garden
- Garden Office
- Leasehold
- Great Location

Rhyl Street, London, NW5



Ground Floor

Total area (approx.): 54.7 sq. m (588.7 sq. ft)
Outbuilding area (approx.): 9.0 sq. m (96.8 sq. ft)