



**Sulina Road, Brixton, SW2**

4 bedroom house - terraced to let

**£876 Per Week**

Furnished

## Property Details

Introducing a beautifully presented four-bedroom terraced house, perfectly positioned between the vibrant areas of Brixton and Clapham. Currently undergoing tasteful redecoration and partial refurbishment, this home offers an excellent opportunity to settle in a dynamic and sought-after location.

## Features

- Private garden
- Light and airy
- Close to transport links
- Terraced House
- Four Bedrooms
- 2 Bathrooms
- One Reception
- Undergoing a redecoration and partial refurbishment to enhance its appeal and functionality

Council tax band E      EPC rating D (68)



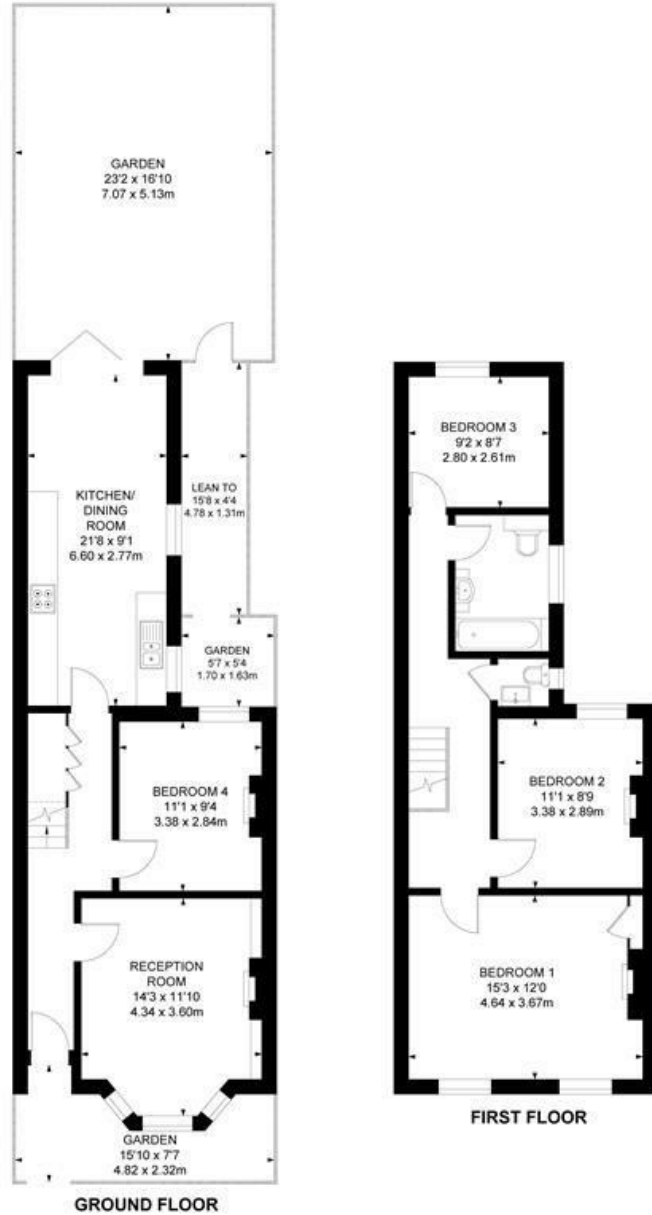
Sulina Road, Brixton, SW2

**Sulina Road, SW2**

**4 Bedroom Flat**

APPROXIMATE GROSS INTERNAL AREA :

1141 SQ FT / 105.96 SQ M



While we try our very best, floor plans are produced as a guide only and we take no responsibility for the precise accuracy with which any property is represented.

Sulina Road, Brixton, SW2

