



Guide Price
£300,000

Freehold

2x  1x  1x 

**West End Cottages,
West End, Marden, Kent,
TN12**

OVER 60?

Secure this property
for up to **59% less!**

Wards
Helping you move forwards



Main features

- End of terrace house
- Driveway parking
- Grade 2 listed
- Popular Marden village
- Low maintenance rear garden
- Wood burner
- Short walk to the train station, school and amenities.

Accommodation

GROUND FLOOR

- Lounge: 15'3 x 11'0 (4.65m x 3.36m)
- Kitchen: 12'5 x 10'3 (3.79m x 3.13m)
- Bathroom: 6'5 x 6'4 (1.96m x 1.93m)

FIRST FLOOR

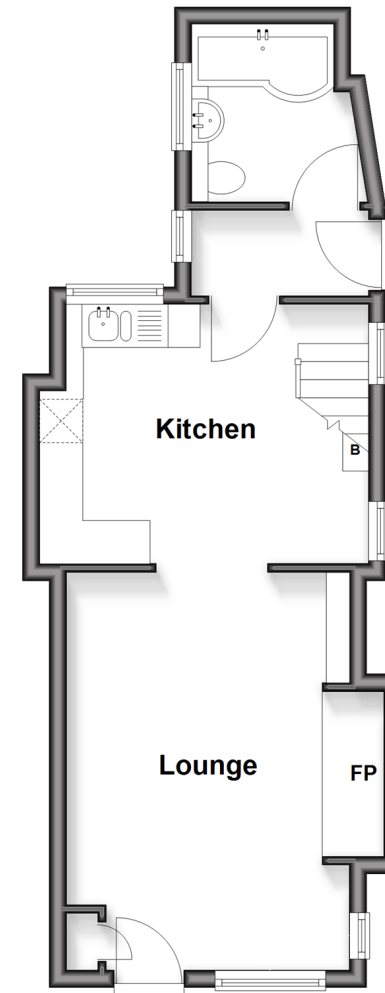
- Landing
- Bedroom 1: 15'7 x 11'2 (4.75m x 3.41m)
- Bedroom 2: 10'3 x 8'0 (3.13m x 2.44m)
- Wardrobe: 7'2 x 4'0 (2.19m x 1.22m)

OUTSIDE

- Front Garden
- Parking

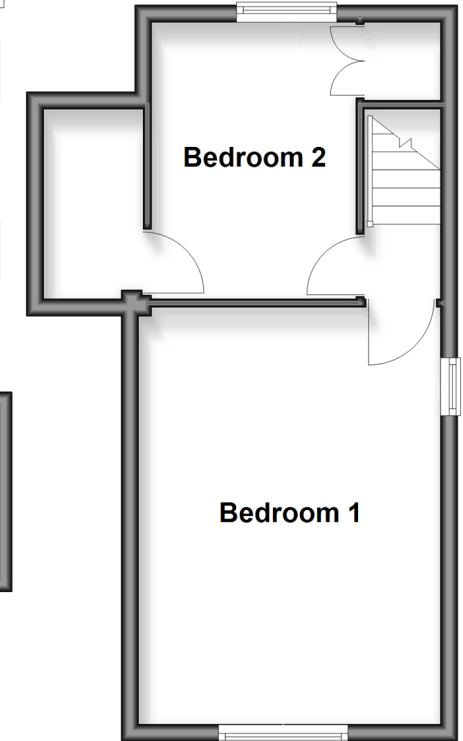
Ground Floor

Approx. 33.6 sq. metres (361.3 sq. feet)



First Floor

Approx. 30.8 sq. metres (331.1 sq. feet)



Call Staplehurst - 01580 893322 ■ wardsofkent.co.uk

- The seller is a person connected with Wards as defined in the Estate Agents Act 1979
- Through a Homewise Home For Life Plan people aged 60+ can secure this property for up to 59% less, by purchasing a Lifetime Lease



1390017Y/20260427/JG1/RB