



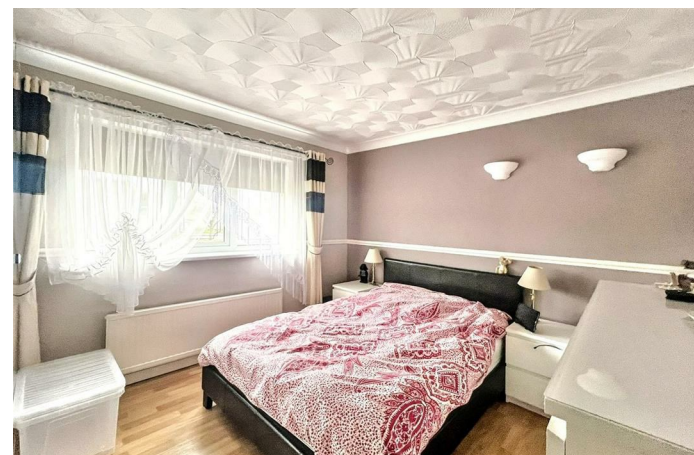
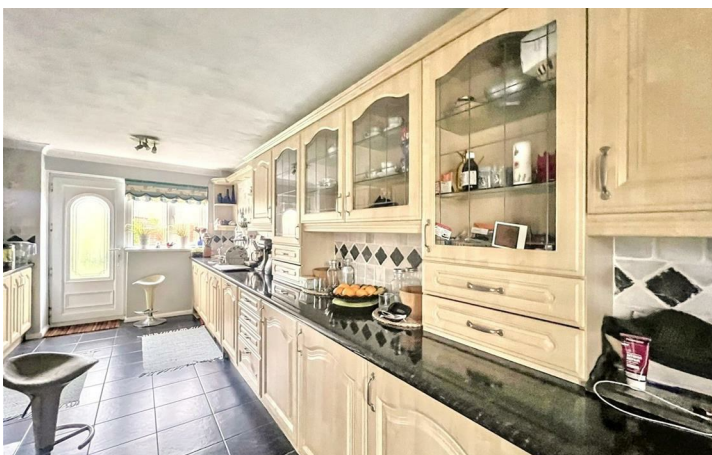
58 Glastonbury Road
Corby, Northants NN18 0DD



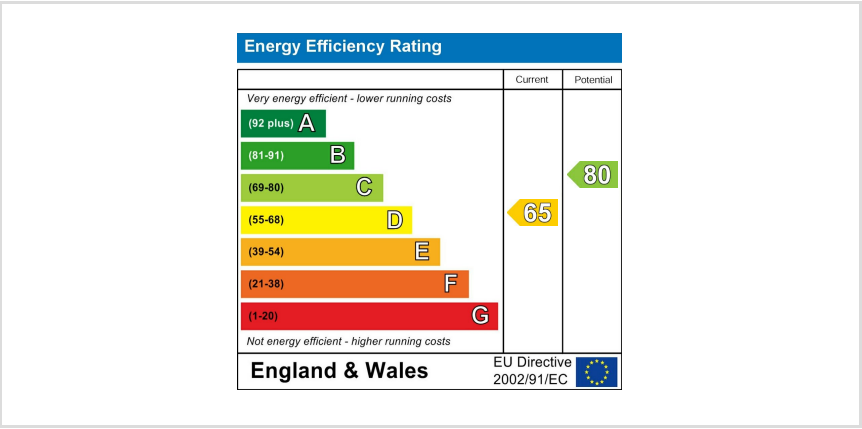
Simpson West

Located within the highly popular Beanfield area is this well presented THREE bedroom family home that is being offered to the market for sale with no onward chain. This home occupies a pleasant position being within walking distance to the local schools, shops and other amenities. Features include an entrance hall/porch area, large living dining room and a fitted kitchen. To the first floor there are two double bedrooms, a good single bedroom and the main family bathroom. Outside is an enclosed garden that is mainly laid to lawn. On street parking is available. Early viewings are a must. Energy rating D. Council Tax Band A.

£185,000



Simpson West



When you buy with Simpson West, you know **you'll be in safe hands**. From the moment you walk through our doors, we'll make you **feel truly welcome**. Our sales consultants and financial advisors will take you through **every step of the process**, offering **free expert advice** along the way, from help choosing the right mortgage and insurance through to finding your conveyancer. And if you need help selling your home too, **with over 20 years of local experience, you can trust us to get you moving**.



**Simpson
West**

Making Every
Journey Personal



01536 202007

info@simpsonwest.co.uk

<https://www.simpsonwest.co.uk/>

64 Corporation Street, Corby, Northants, NN17 1NH