

Frank Harris & Co.



Cranleigh House, NW1

£480 Per week

A well-proportioned first-floor one-bedroom property featuring a separate kitchen, generous storage, and excellent natural light throughout. The flat offers a practical layout with bright, airy living spaces and ample storage solutions.

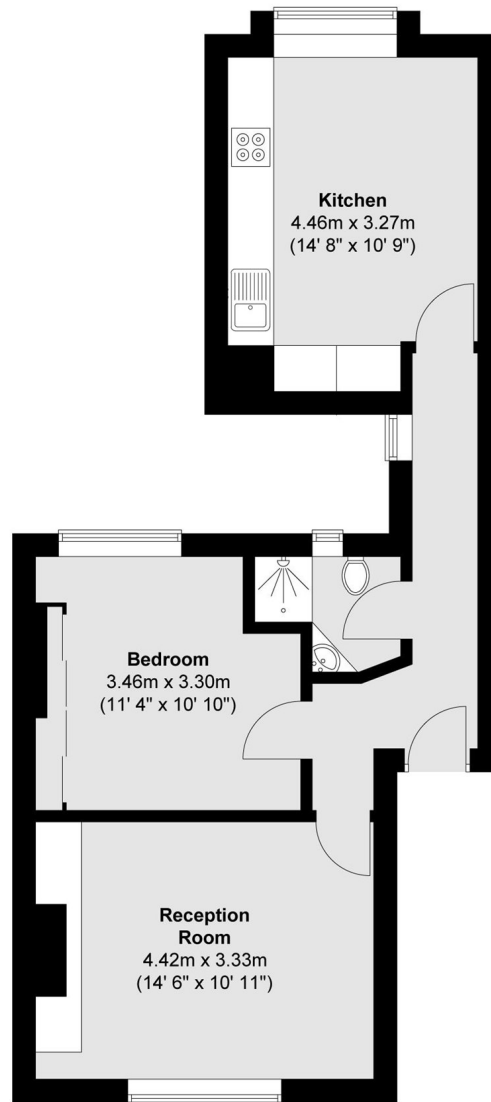


Cranleigh House is well positioned within easy reach of local shops, cafés, and everyday amenities, as well as Camden High Street and Regent's Park. The property benefits from excellent transport links, with nearby Euston and Mornington Crescent stations providing direct access across London and beyond.

- Spacious One Bed • Seperate Kitchen • Prime Location •
- First Floor • Natural Light • Good Storage •



Frank Harris & Co.



Total area (approx.) : 49.4 sq. m (532 sq. ft)

Frank Harris & Co. Bloomsbury and Kings Cross
81 Marchmont Street, London,
WC1N 1AL
020 7387 0077
bloomsburylettings@frankharris.co.uk

Energy Rating: . We aim to make our particulars both accurate and reliable. However they are not guaranteed; nor do they form part of an offer or contract. If you require clarification on any points then please contact us, especially if you're traveling some distance to view. Please note that appliances and heating systems have not been tested and therefore no warranties can be given as to their good working order.

