



Addison  
ESTATE AGENTS



Flat 4, Endeavour Place 56 Columbus Drive, Sarisbury Green,  
**£235,000 Leasehold**

Offered for sale with NO FORWARD CHAIN, this beautifully presented first-floor apartment is situated within the highly sought-after Admirals Wood development in Sarisbury Green. Built by the renowned Miller Homes in 2012, the development is particularly admired for its attractive setting amongst larger executive four and five-bedroom homes, creating a prestigious and well-established residential environment.

One of the property's standout features is its enviable location just a stone's throw from Holly Hill Woodland Park and Holly Hill Leisure Centre, offering superb leisure facilities, scenic walks and open green spaces right on the doorstep. Excellent transport links are also nearby, with easy access to the A27, M27 and surrounding business centres.


The apartment itself offers spacious and well-maintained accommodation throughout. The welcoming entrance hall leads to two generous double bedrooms, a modern bathroom fitted with a white suite and shower over the bath, and a stylish fitted kitchen with ample storage and space for appliances.

The impressive lounge/diner provides an excellent entertaining and living space, flooded with natural light and offering plenty of room for both seating and dining furniture.

Further benefits include gas central heating, double glazing, allocated parking and the use of attractive communal gardens to the rear.

Whether you're a first-time buyer, downsizer or investor, this is a rare opportunity to acquire a superb apartment within one of Sarisbury Green's most desirable developments.



Energy Efficiency Rating		
	Current	Potential
Very energy efficient - lower running costs		
(92 plus) <b>A</b>		
(81-91) <b>B</b>	<b>81</b>	<b>81</b>
(69-80) <b>C</b>		
(55-68) <b>D</b>		
(39-54) <b>E</b>		
(21-38) <b>F</b>		
(1-20) <b>G</b>		
Not energy efficient - higher running costs		
<b>England &amp; Wales</b>	EU Directive 2002/91/EC 	

## Further Information

**Local Council:**

**Council Tax Band:**

**C**

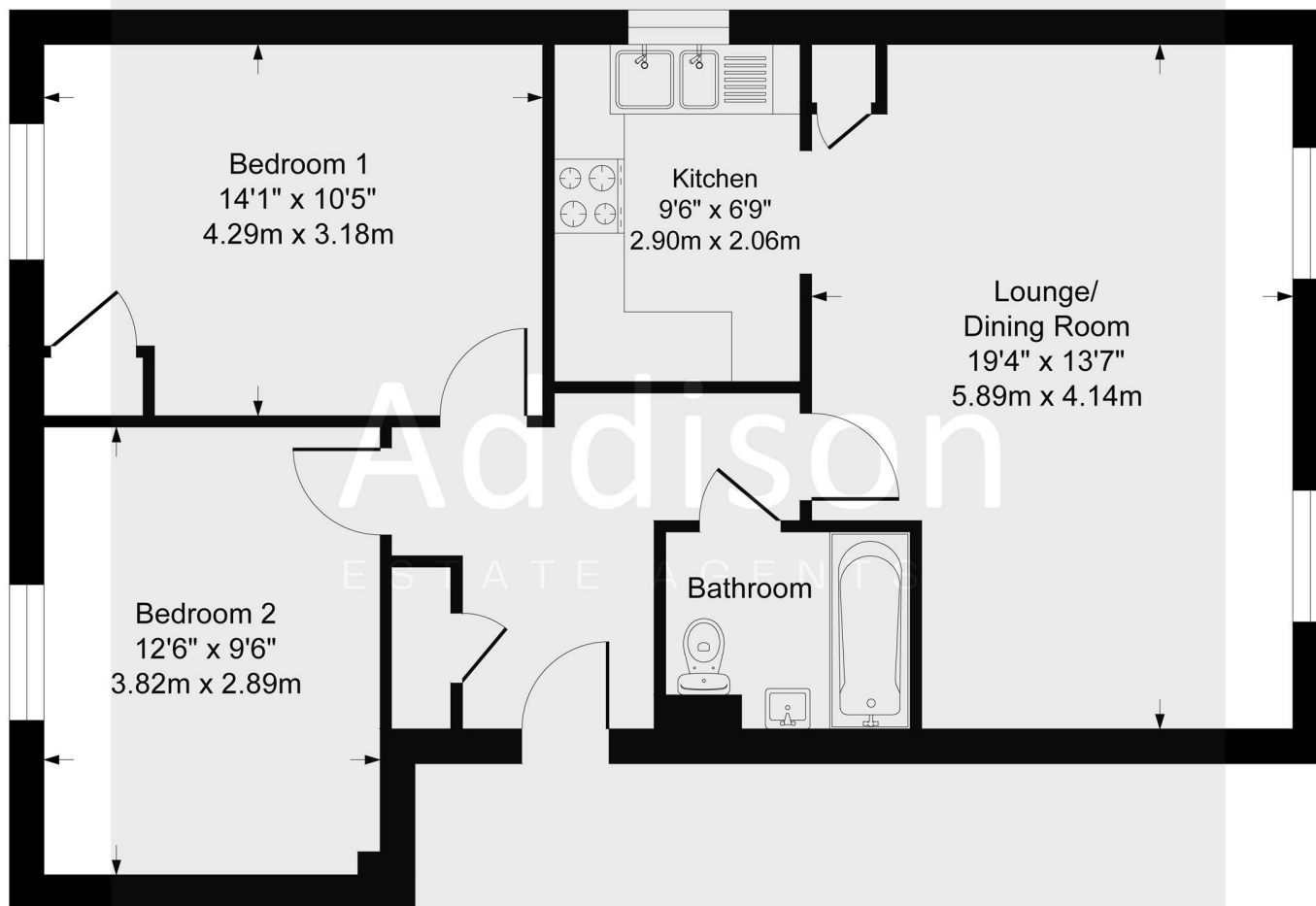
**Amount Payable for 2025/2026:**

**Add Text here**

**Estate Management Charge:**

**TBC**

**Approximate Gross Internal Area**  
**722 sq ft - 67 sq m**



Although every attempt has been made to ensure accuracy, all measurements are approximate.  
This floorplan is for illustrative purposes only and not to scale.  
Measured in accordance with RICS Standards.

- No Forward Chain
- Highly Sought-After Admirals Wood Development
  - Built By Renowned Developer Miller Homes
  - Positioned Amongst Executive Four & Five Bedroom Homes
    - Two Generous Double Bedrooms
      - Spacious Lounge/Diner
      - Modern Fitted Kitchen
    - Gas Central Heating & Double Glazing
    - Allocated Parking & Communal Gardens
  - Stone's Throw From Holly Hill Woodland Park & Leisure Centre



**Addison**  
ESTATE AGENTS

**If you proceed to purchase the property, in accordance with current Anti-Money Laundering Regulations (AML), we are required to verify the identity of all clients purchasing a property. We use an online service to verify identity. A fee of £10 + VAT (£12 including VAT) per individual will be charged for these AML searches.**



**01489 668 999**



**sales@addisonestateagents.co.uk**



**www.addisonestateagents.co.uk**