



Sutton Road, Waterlooville PO8 8PT

welcome to

Sutton Road, Waterloo

Spacious Chalet Bungalow! Well presented and versatile family home set on a quiet residential road, featuring a bright lounge, fitted kitchen, ground floor W/C, and flexible layout with two bedrooms downstairs and two upstairs.

Entrance Hall

Stairs leading to first floor with understairs storage. Radiator, carpet flooring.

Cloakroom

Double glazed window to side aspect. Low level WC. Tiled floor.

Lounge

Double glazed window to front aspect. Carpet flooring, two radiators.

Kitchen

Double glazed windows to side and rear aspects. Double glazed door to rear garden. Range of wall and base units with work surface over, incorporating one and a half bowl sink unit with mixer tap over. Space for oven and hob with extractor hood over, space for under the counter fridge and freezer, washing machine and slimline dishwasher. Wall mounted boiler.

Bedroom Three

Double glazed window to rear aspect. Carpet flooring, radiator.

Bedroom Four

Double glazed window to front aspect. Laminate flooring, radiator.

First Floor Landing

Double glazed window to side aspect. Built-in storage cupboard, carpet flooring. Doors to:

Bedroom One

Two double glazed skylights, carpet tiled flooring, radiator. .

Bedroom Two

Double glazed window to rear aspect. Laminate flooring, radiator.

Bathroom

Double glazed window to rear aspect. Suite comprising panel enclosed bath with shower over, low level WC and pedestal wash hand basin. Tiled floor, heated towel rail.

Outside

Front Garden

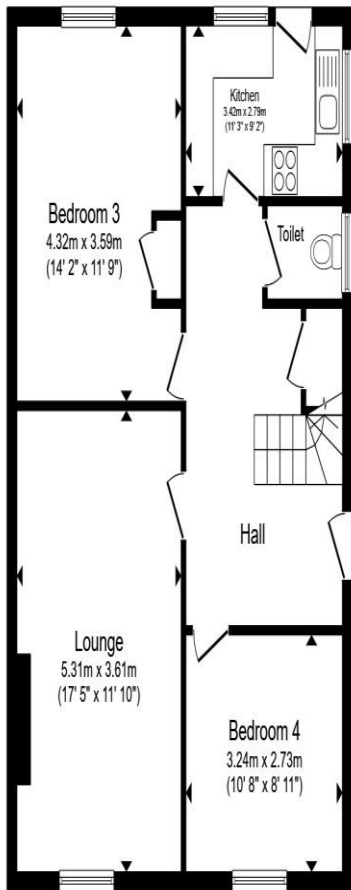
Paved patio and tarmac driveway, providing off road parking and leading to garage.

Garage

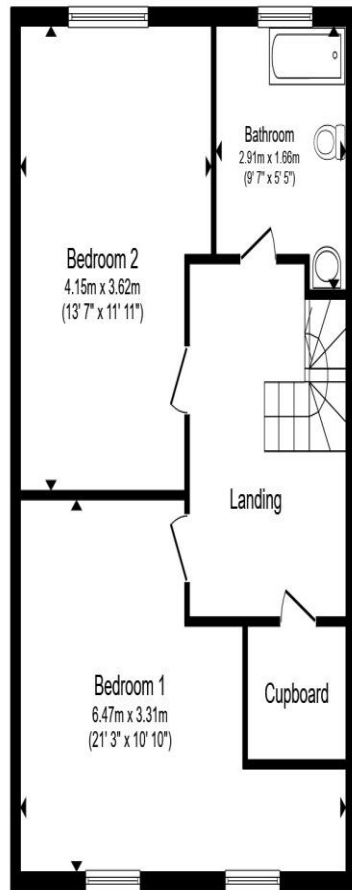
Up and over door. Personal door to rear garden.

Rear Garden

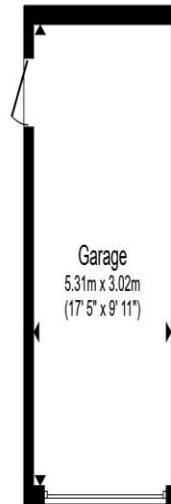
Laid to lawn and patio. Personal door to garage. Enclosed by panel fencing.



Ground Floor



First Floor



Garage

Total floor area 154.4 m² (1,661 sq.ft.) approx

This floor plan is for illustrative purposes only. It is not drawn to scale. Any measurements, floor areas (including any total floor area), openings and orientation are approximate. No details are guaranteed, they cannot be relied upon for any purpose and they do not form part of any agreement. No liability is taken for any error, omission or misstatement. A party must rely upon its own inspection(s). Powered by www.propertybox.io



welcome to
Sutton Road,
Waterlooville

- Four Bed Chalet Bungalow
- Semi Detached
- Off Road Parking & Garage
- Spacious Lounge
- Ground Floor Cloakroom

Tenure: Freehold EPC Rating: C
Council Tax Band: D

£335,000



view this property online fox-and-sons.co.uk/Property/WLV109732



Property Ref:
WLV109732 - 0002

1. MONEY LAUNDERING REGULATIONS Intending purchasers will be asked to produce identification documentation at a later stage and we would ask for your co-operation in order that there is no delay in agreeing the sale. 2. These particulars do not constitute part or all of an offer or contract. 3. The measurements indicated are supplied for guidance only and as such must be considered incorrect. Potential buyers are advised to recheck measurements before committing to any expense. 4. We have not tested any apparatus, equipment, fixtures or services and it is in the buyers interest to check the working condition of any appliances. 5. Where an EPC, or a Home Report (Scotland only) is held for this property, it is available for inspection at the branch by appointment. If you require a printed version of a Home Report, you will need to pay a reasonable production charge reflecting printing and other costs. 6. We are not able to offer an opinion either written or verbal on the content of these reports and this must be obtained from your legal representative. 7. Whilst we take care in preparing these reports, a buyer should ensure that his/her legal representative confirms as soon as possible all matters relating to title including the extent and boundaries of the property and other important matters before exchange of contracts.

Fox & Sons is a trading name of Sequence (UK) Limited which is registered in England and Wales under company number 4268443, Registered Office is Cumbria House, 16-20 Hockliffe Street, Leighton Buzzard, Bedfordshire, LU7 1GN. VAT Registration Number is 500 2481 05.



023 9226 2447



Waterlooville@fox-and-sons.co.uk



81B London Road, WATERLOOVILLE,
Hampshire, PO7 7ES



fox-and-sons.co.uk