



Park Drive, Gunnersbury, Acton, London W3 8ND
Price £960,000 Freehold

Situated in an attractive location, in the **Gunnersbury Triangle** conservation area and facing a pretty ornamental green. A few minutes from the lovely open space of Gunnersbury park and with access to **Acton Town** with local shopping facilities and also to **Ealing Broadway station** with forthcoming Crossrail Link connection & town centre.

A 3-bedroom terraced house arranged over three floors with a very attractive rear lawned garden of approx 53' and garage at the rear. Total approx floor area 154 sq m / 1661 sq ft (includes garage).

The accommodation comprises hall, 2 open-plan reception rooms, kitchen, 3 bedrooms, luxury family bathroom and an en suite shower room.

There is a very attractive rear lawned garden of approx 53' with decked patio and a garage at the rear.

Total approx floor area 154 sq m / 1661 sq ft (including garage)



Park Drive, London, W3

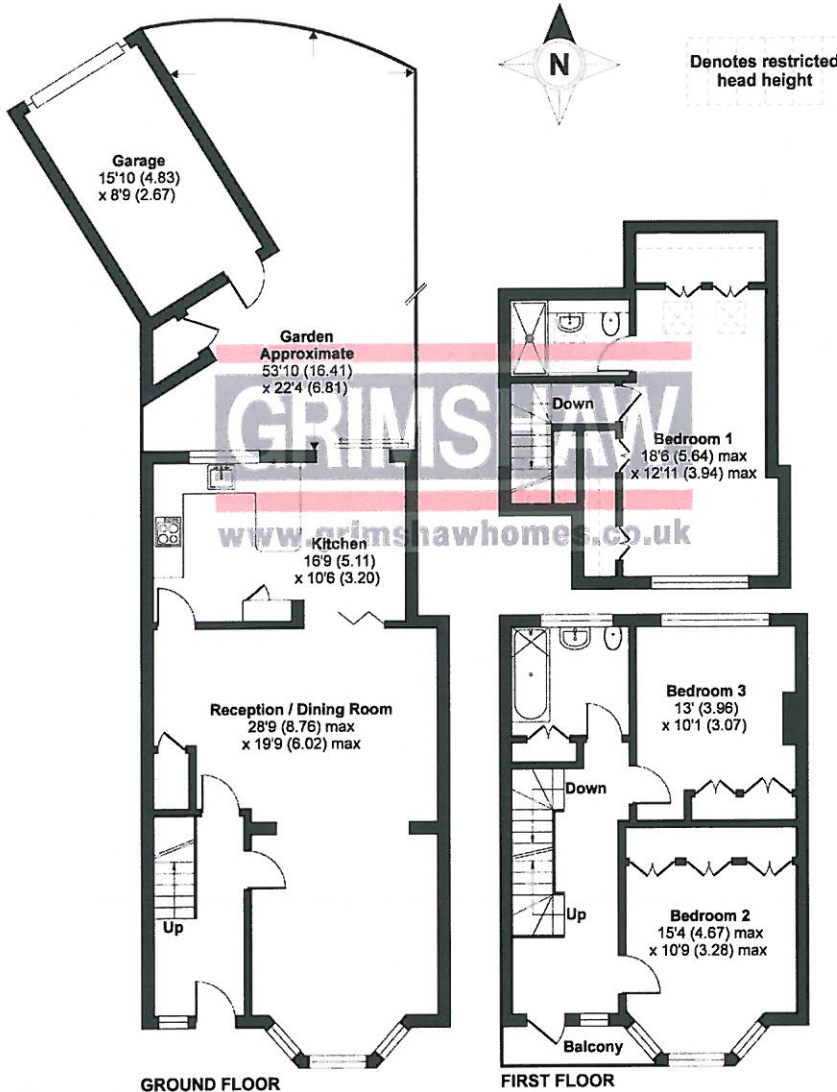
Approximate Area = 1635 sq ft / 151 sq m (includes garage)

Limited Use Area(s) = 18 sq ft / 2 sq m

Outbuilding = 8 sq ft / 1 sq m

Total = 1661 sq ft / 154 sq m

For identification only - Not to scale



Floor plan produced in accordance with RICS Property Measurement Standards incorporating International Property Measurement Standards (IPMS2 Residential) © n°dchom 2020 Produced for Grimshaw & Co REF: 817041

EPC Rating = D

Council tax band = F (subject to confirmation)



VIEWING BY APPOINTMENT - All negotiations should be conducted through Grimshaw & Company, who will be pleased to arrange appointments and provide further information.

Any reference to the term "period" denotes period-style. Services, heating, appliances, any security and drainage systems have not been tested. Internal photographs are reproduced for general information only and it must not be inferred that any item shown therein is included with the property. Where double-glazing is mentioned, it must not be inferred that each and every door and window in the property is double-glazed. Trade Names: Where trade names are mentioned, you are advised to verify these with the vendor to your own satisfaction. All property measurements are approximate and have been taken with an electronic tape into bays and alcoves as appropriate. These particulars do not form part of any offer or contract nor can their accuracy be relied upon by purchasers, who should satisfy themselves by inspection or otherwise. Neither Grimshaw & Company nor any person in their employment has any authority to make or give any warranty whatever in relation to any property. No responsibility can be accepted for any loss of expenses incurred in viewing in relation to any property.

27.04.2021 Ref: 9410

Grimshaw and Co, 5 Station Parade, Ealing Common, London W5 3LD

GRIMSHAW
www.grimshawhomes.co.uk