



HUDDLESTONE ROAD, NW2

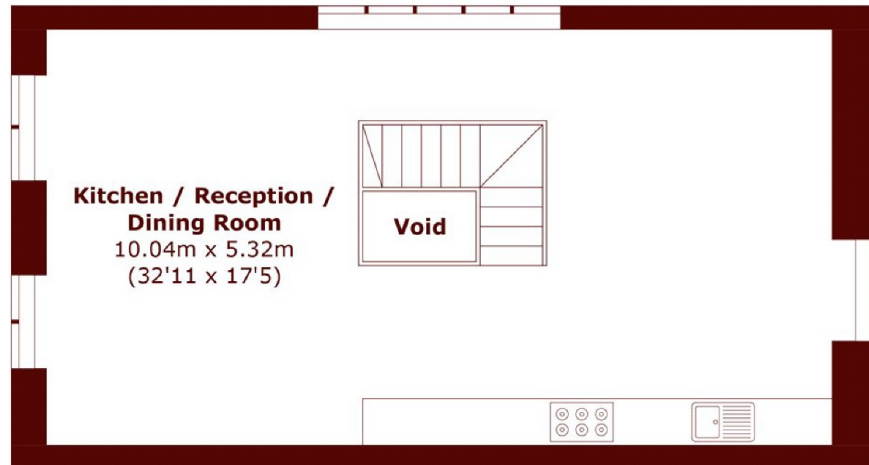
£575,000

This bright, two-bedroom, two-bathroom apartment is arranged over the first and second floors of a charming church conversion, comprising an impressive 575sqft kitchen/living space with integrated appliances,

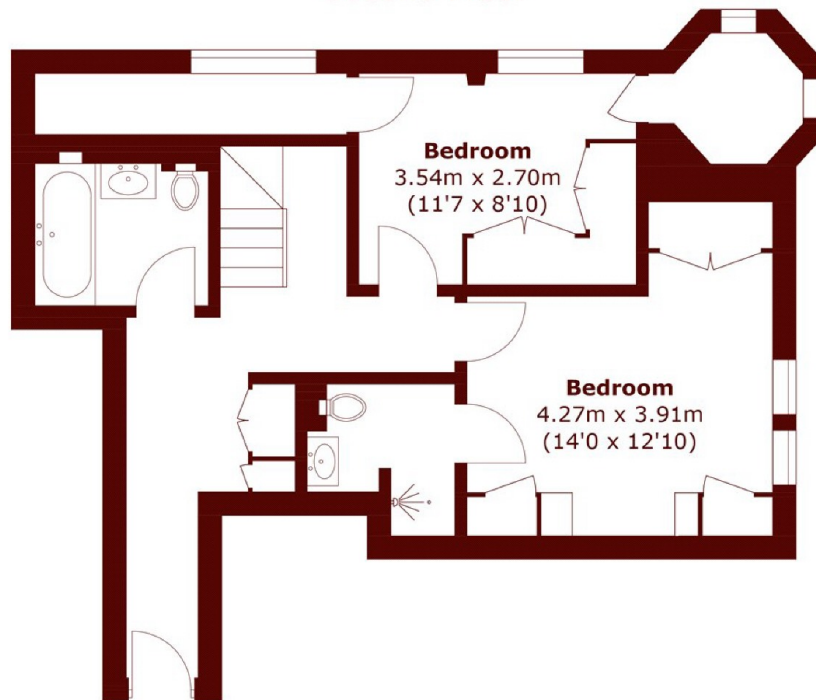
Two Bedrooms
Arranged Over 1,100 sq ft
Split Level Apartment

High Ceilings
Church Conversion
Modern Finish

STEP INSIDE HUDDLESTONE ROAD



Second Floor



First Floor

Total area (approx.): 106.5 sq. m (1146.3 sq. ft)
(Excluding Void)

Willesden Green
020 8451 0420

Energy Rating: C We aim to make our particulars both accurate and reliable. However, they are not guaranteed; nor do they form part of an offer or contract. If you require clarification on any points then please contact us, especially if you're traveling some distance to view. Please note that appliances and heating systems have not been tested and therefore no warranties can be given as to their good working order

**MARSH &
PARSONS**