

**Priory Road, NW6**

**£1,025,000**

**Dexters**



## Priory Road, NW6

A recently refurbished three bedroom garden apartment with its own private entrance, offering stylish and versatile accommodation throughout. The property also benefits from a share of freehold.

To the front of the property are two bedrooms, including an impressive principal suite featuring a charming bay window and En-Suite. The second front bedroom also benefits from access to a substantial storage cupboard, ideal for additional household space. To the rear, the home opens into a stunning recently refurbished open plan kitchen and living area, thoughtfully designed for modern living and entertaining. The kitchen integrated appliances, a wine fridge, and ample workspace, while the feature fireplace creates a warm and inviting focal point. Doors open directly onto a private garden, creating a superb indoor-outdoor lifestyle, with the added benefit of steps leading up to a large communal lawned garden beyond. In addition the property offers a third bedroom, ideal as a guest room, home office or nursery, complemented by a well-appointed family bathroom.

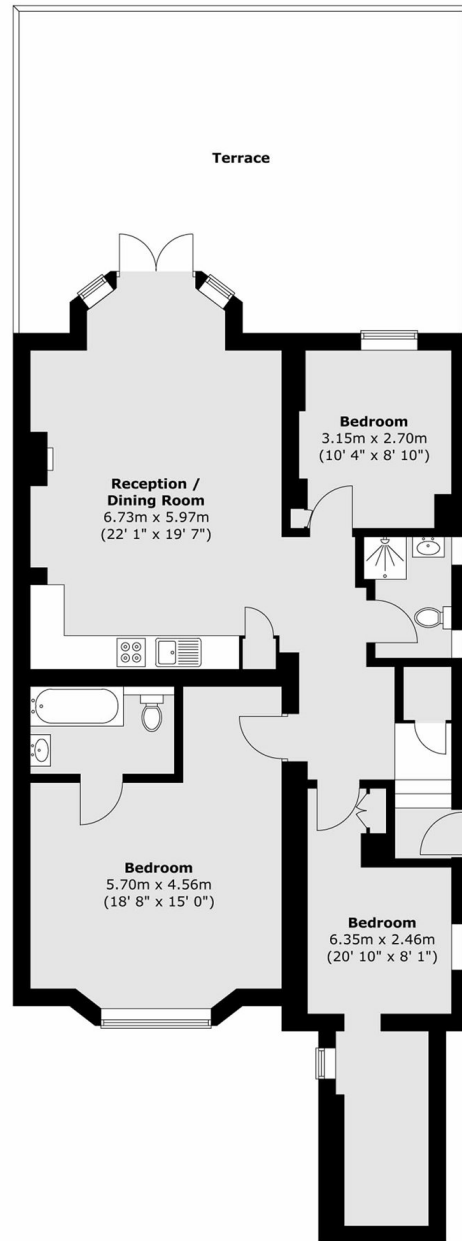
Priory Road is situated just off Abbey Road in South Hampstead and close to Swiss Cottage and West Hampstead transport links together with excellent local shopping and restaurant facilities nearby.

### Features

- Recently Refurbished
- Private Garden
- Three Bedrooms
- Share Of Freehold
- Two Bathrooms
- Own Entrance



# Priory Road, London, NW6



Total area (approx.) : 95.3 sq. m (1026 sq. ft)  
Total terrace area (approx.) : 38.9 sq. m (419 sq. ft)