



Herne Road, KT6

£475,000

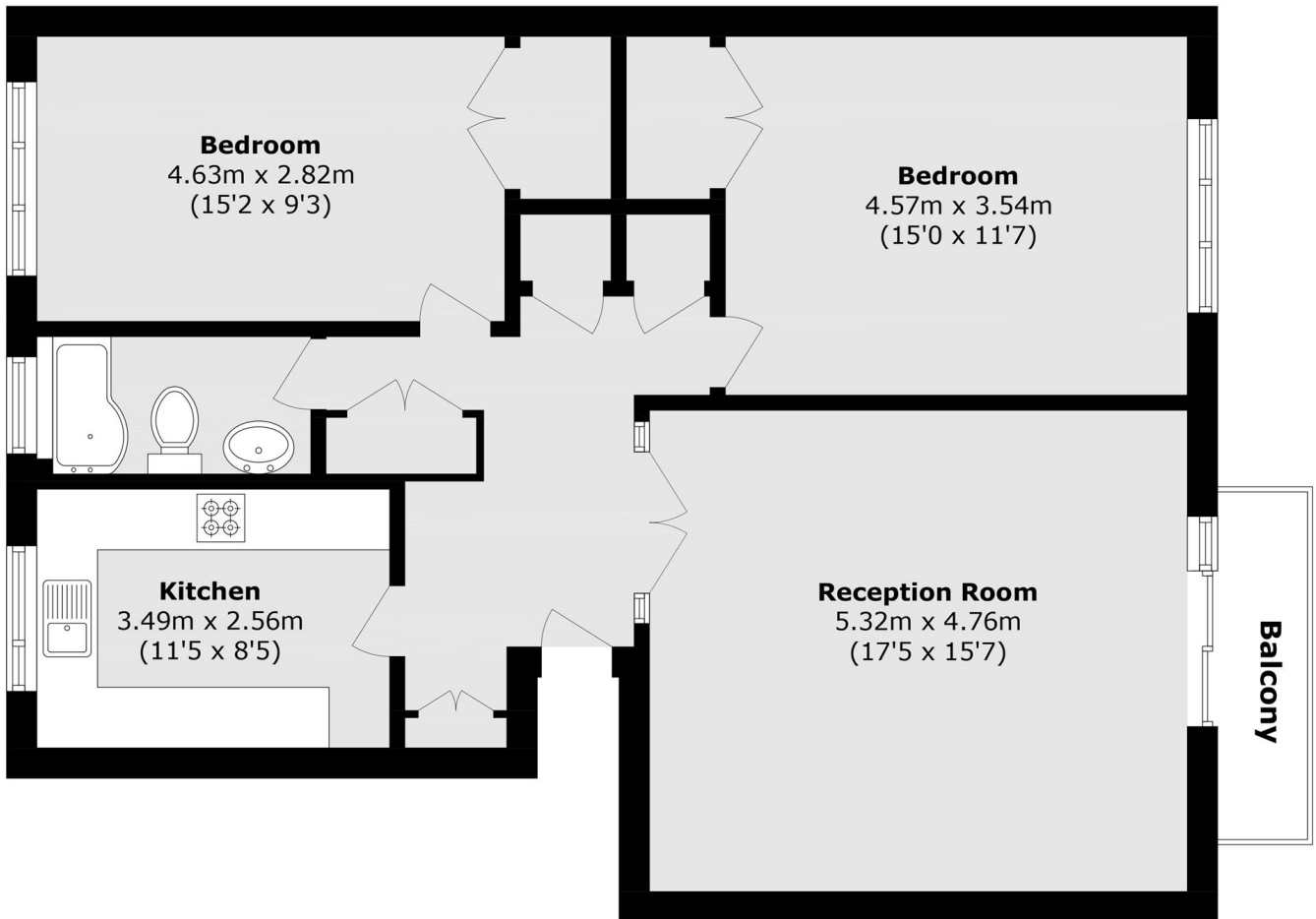
This well presented, purpose built apartment is ideally located and offers plenty of light and space. With over 900sqft of accommodation, there are two double bedrooms, three piece bathroom suite, a smart kitchen and a spacious lounge opening up on to a balcony. Externally there are lovely communal gardens. Further benefits include a long lease of over 900 years, ample storage and no onward chain.

Sherwood is peacefully located off of Herne Road which has easy access to the A3 and local bus routes, and is just over a mile away from Surbiton train station with its fast and direct trains to London Waterloo (16 minutes). The popular market town of Kingston Upon Thames is also nearby. Local amenities and convenience stores are a stones throw away from Herne Road on Hook Road.

Features

- Top Floor Flat
- Larger Than Average
- Two Double Bedrooms
- Balcony
- Ample Storage
- No Onward Chain

Herne Road, Surbiton, KT6



Total area (approx.): 86.2 sq. m (927.8 sq. ft)
Balcony total (approx.): 3.3 sq. m (35.5 sq. ft)