



Franklin House

Carlton Vale, NW6

£3,100 per month
(£715.38 per week)

A beautiful and well presented two bedroom, two bathroom apartment within this new development. Comprising of bright open plan reception leading onto the balcony, two double bedrooms, two bathrooms and ample storage.

CHESTERTONS



Franklin House

Carlton Vale, NW6

- Two double bedrooms
- Two bathrooms
- Wooden floors
- Open plan reception
- Balcony
- 827 SQFT



A beautiful and well presented two bedroom, two bathroom apartment within this new development. Compromising of bright open plan reception leading onto the balcony, two double bedrooms, two bathrooms and ample storage.

Located on Carlton Vale while also benefiting from a wide range of amenities on Maida Vale with the green spaces of Paddington Recreation Ground nearby.

Minimum Term: 12 months
Deposit Required: 5 weeks
Local Authority: London Borough of Brent
Council Tax Band: C
EPC Rating: B
Furnished

Score	Energy rating	Current	Potential
92+	A		
81-91	B	84 B	84 B
69-80	C		
55-68	D		
39-54	E		
21-38	F		
1-20	G		

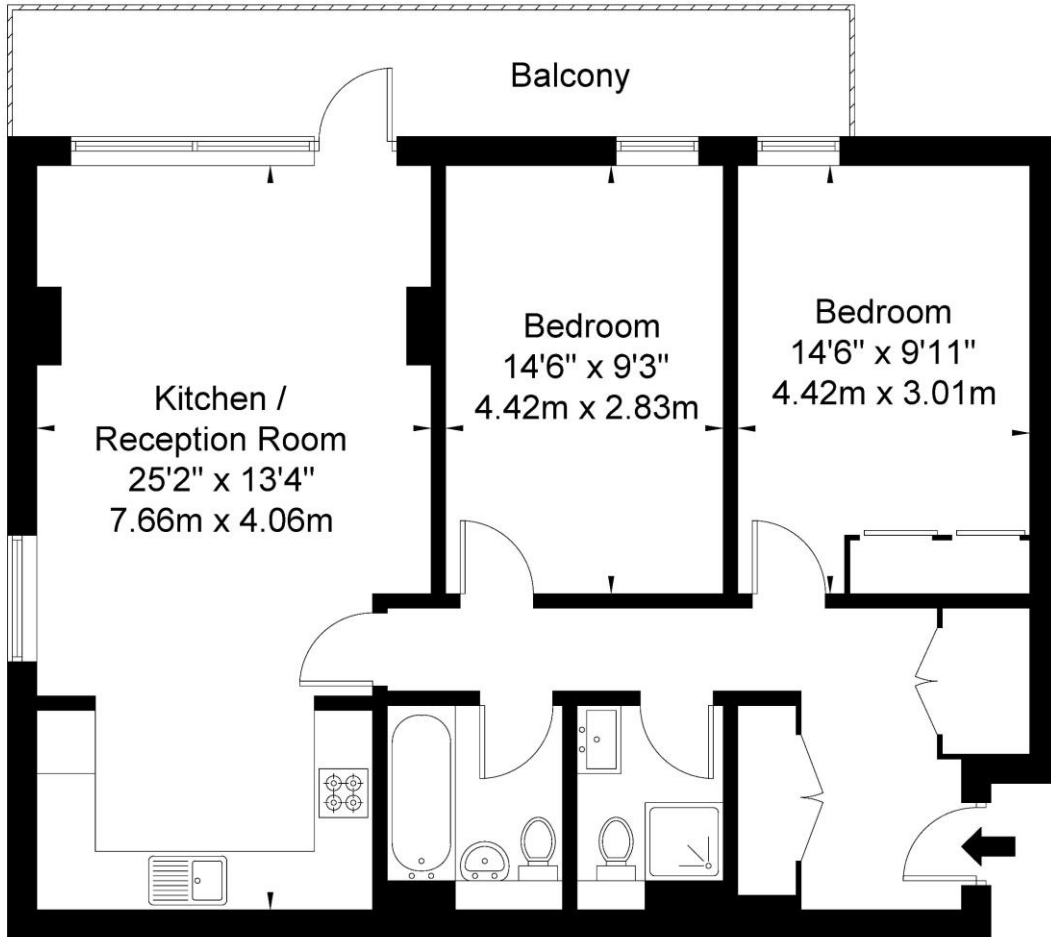
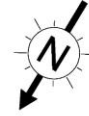
Chestertons Little Venice Lettings

26 Clifton Road
Maida Vale
London
W9 1SX
littlevenicelettingsusers@chestertons.co.uk
02072662369
chestertons.co.uk

Additional tenant charges apply (fees apply to non-AST tenancies only)
Tenancy Agreement Fee: £300
References per Tenant/Guarantor: £60
Inventory check (approx. £100 – £250 inc. VAT)
chestertons.co.uk/property-to-rent/applicable-fees

Franklin House Wilton Road SW1V 1DZ

Approx Gross Internal Area = 76.9 sq m / 827 sq ft



Fourth Floor

Ref

Copyright **BLEU
PLAN**

The Floor plan is not to scale and measurements and areas shown are approximate and therefore should be used for illustrative purposes only. The plan has been prepared in accordance with the RICS code of Measuring Practice and whilst we have confidence in the information produced it must not be relied on. If there is any aspect of particular importance, you should carry out or commission your own inspection of the property.

Copyright @ BLEUPLAN

