



Cyrus Field Street, SE10

£750 Per week

A duplex three double bedroom maisonette situated within a new build riverside development in Greenwich. Boasting in excess of 110sqm of internal floor space, plus a private courtyard and underground parking by negotiation.

Cyrus Field Street is within a mile of central Greenwich Market and Cutty Sark amenities and within 1.3 miles of North Greenwich Jubilee Station. You can also reach the Underground via a short 12-minute direct bus ride from Blackwall Lane.

Features

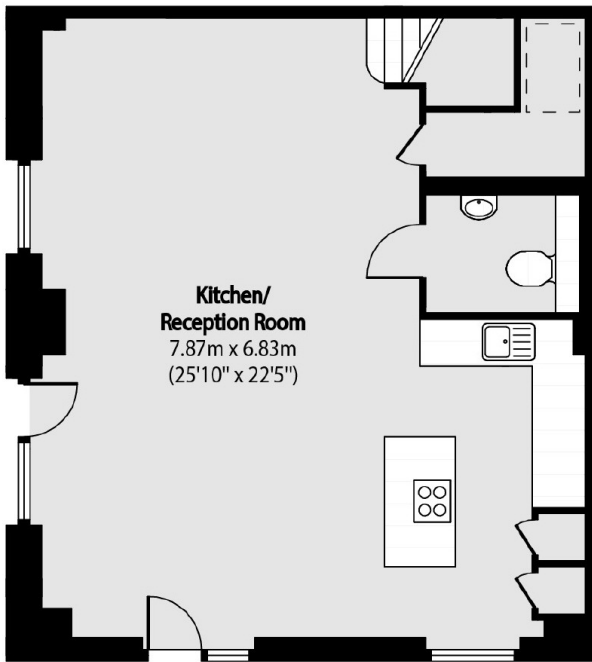
- Three Double Bedrooms
- Two Bathrooms
- Additional WC
- Furnished / Part-Furnished
- Parking By Negotiation
- Riverside Development



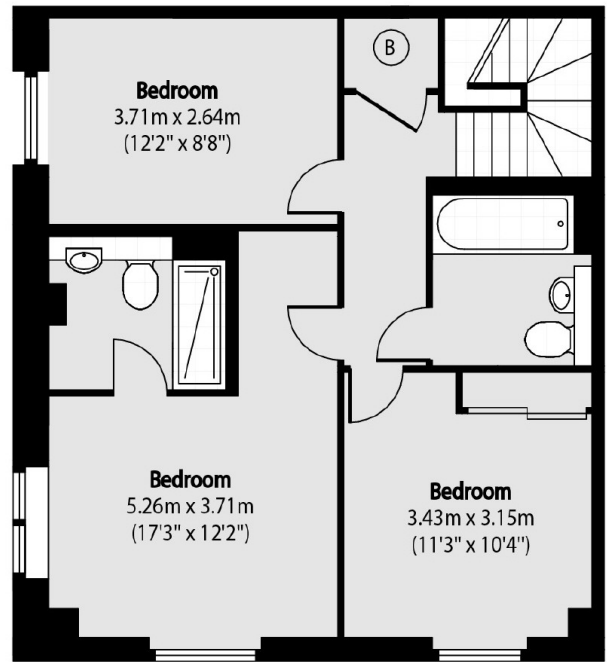
Cyrus Field Street, SE10



Cyrus Field Street,
London, SE10



Ground Floor



First Floor

Total area (approx): 112.78 sq m (1214 sq. ft)