



## Clifton Rise, SE14

£425,000

A beautifully presented and generously proportioned two-bedroom duplex apartment, set within the charming Fordham House, an attractive and well-maintained period conversion in the heart of New Cross, SE14.

The property comprises two double bedrooms, 15ft reception room, separate kitchen, and a three-piece bathroom suite. The property further benefits from the use of a communal courtyard and the beautiful Fordham Park is at its doorstep, providing for great outdoor space.

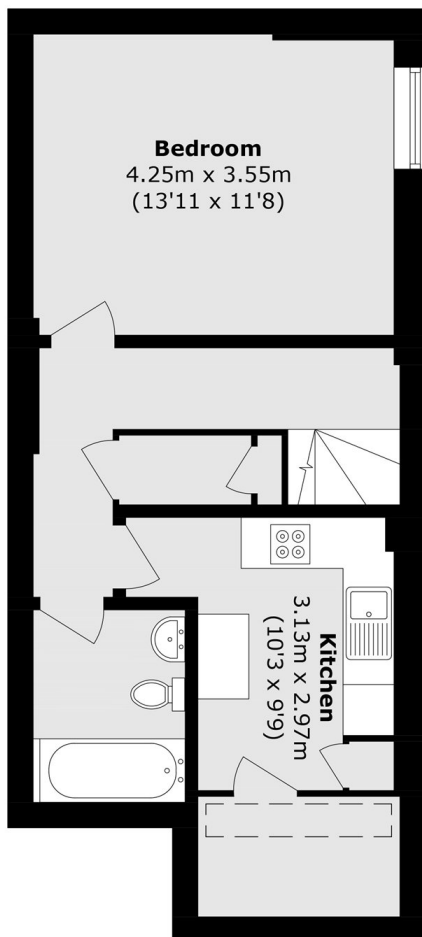
Formerly a public house, this modern flat is spacious and bright, and will appeal to many buyers.

Ideally positioned on a quiet, tree-lined residential street, the property offers an excellent balance of tranquillity and everyday convenience. A wide selection of local shops, cafés, restaurants, and supermarkets are all within easy walking distance, together with well-regarded schools and attractive green open spaces.

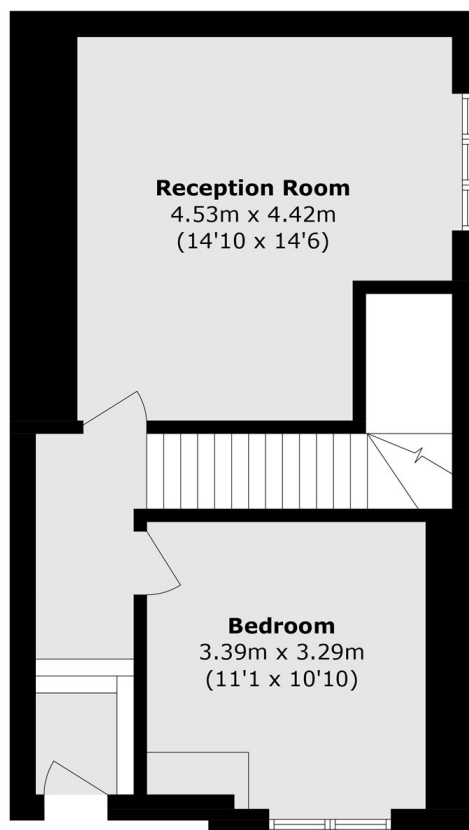
### Features

- Two Bedrooms
- Split Level
- Large Reception Room
- Chain Free
- Close To Transport Links
- Well Positioned For Green Spaces

# Clifton Rise, London, SE14



## Basement



## Ground Floor

Total area (approx.): 86.7 sq. m (933.2 sq. ft)