



66 Marley Fields

, Wheatley Hill, DH6 3AX

Offers Over £299,999



****NO CHAIN****

Nestled in the desirable area of Marley Fields, Wheatley Hill, this stunning detached house is a rare find in the market. Built in 2020, this new build property boasts a generous 1,335 square feet of beautifully presented living space, making it an ideal family home.

The house features four spacious bedrooms, providing ample room for family and guests alike. The two well-appointed bathrooms ensure convenience and comfort for all. The heart of the home is undoubtedly the smart kitchen diner, which flows seamlessly into two inviting reception rooms, perfect for entertaining or relaxing with loved ones.

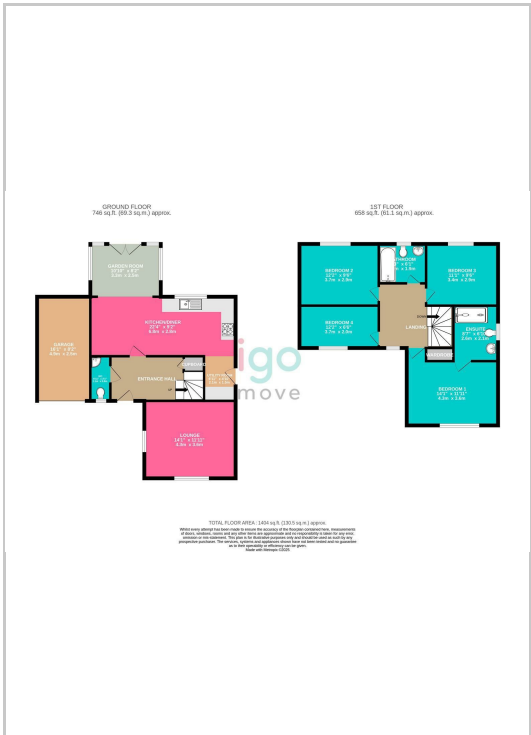
Step outside to discover a large rear garden, a true oasis for outdoor living. This space is enhanced by a luxurious hot tub/charming patio seating area with hut, and a unique man cave or pool room, offering endless possibilities for leisure and enjoyment.



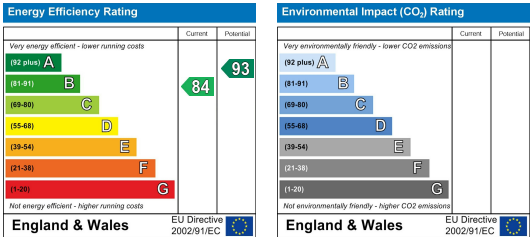
Area Map



Floor Plan



Energy Efficiency Graph



These particulars, whilst believed to be accurate are set out as a general outline only for guidance and do not constitute any part of an offer or contract. Intending purchasers should not rely on them as statements of representation of fact, but must satisfy themselves by inspection or otherwise as to their accuracy. No person in this firms employment has the authority to make or give any representation or warranty in respect of the property.