



CHATTERTON | REES



DORMER
COTTAGE

Dormer Cottage Portsmouth Road, Woking, GU23 6EY
£1,200,000

 3  2  2  B



THE FIRST THING I
DO IN THE MORNING IS
BRUSH MY TEETH AND
SHARPEN MY TONGUE

I WISH YOU LOVED
ME THE SAME
WAY I LOVE YOU

YOU'VE LOST ME
AT HEELS

Dormer Cottage Portsmouth Road

Woking, GU23 6EY

£1,200,000

- Three Bedrooms
- Large gated driveway
- Recently extended and remodelled
- Two Bathrooms, 11 W.C
- Stunning finish throughout
- Ripley Village

A beautifully refurbished, remodelled, and extended home in the heart of Ripley Village, offering close to 2,000 sq ft of exceptional accommodation across two floors.

Originally built in 2020, the property has since been thoughtfully extended and enhanced to an impressive specification. The ground floor features a generous formal drawing room, alongside a cosy snug with stylish Crittall-style doors opening seamlessly into the dining area and beautifully appointed kitchen — creating a superb balance of elegant entertaining space and relaxed family living.

The gardens, both front and rear, have been meticulously landscaped. To the front, a large driveway, manicured lawn, and covered porch entrance create an excellent first impression, while the rear garden offers two separate patio areas, a dedicated BBQ space.

Likely unmatched in specification within the local area, this outstanding home is also one of the very few to benefit from secure gated entry and an expansive driveway with ample parking for multiple vehicles.



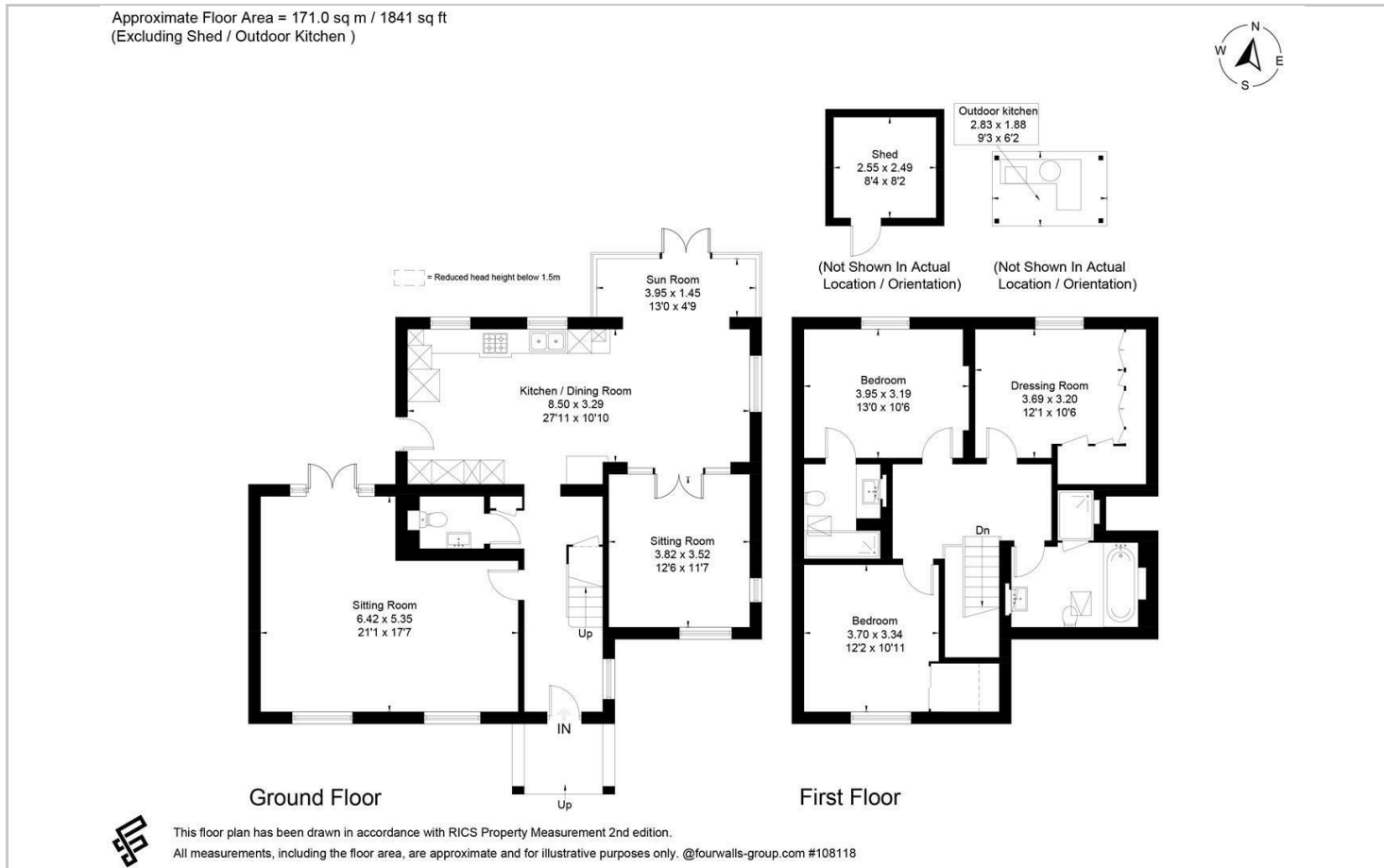


Directions

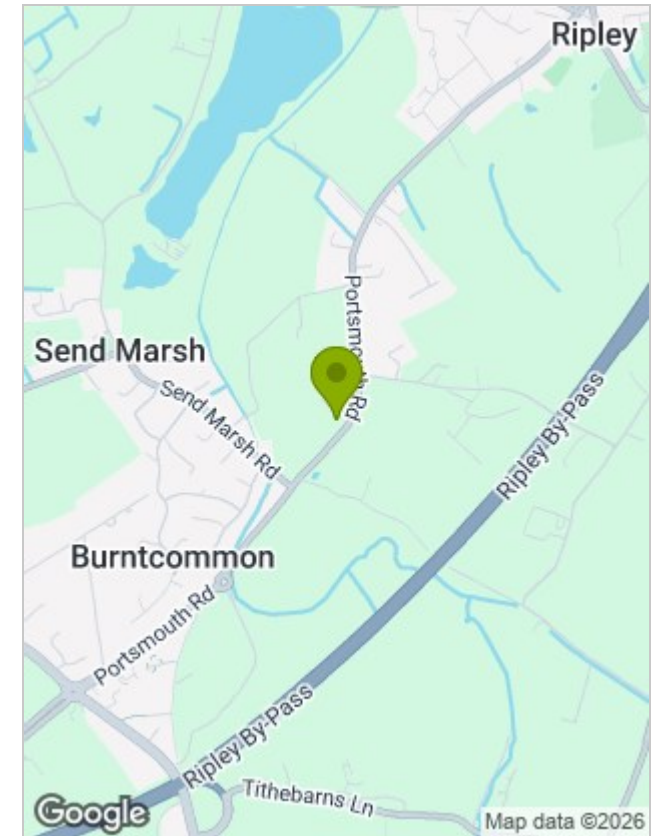




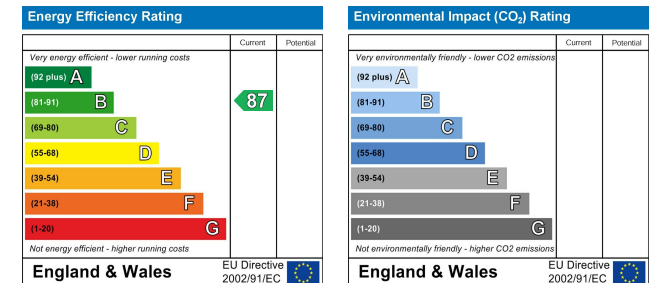
Floor Plans



Location Map



Energy Performance Graph



Viewing

Please contact our Sunningdale Country Homes Office on 020 3780 0580 if you wish to arrange a viewing appointment for this property or require further information.

The particulars are set out as a general outline only for the guidance of intended purchasers or lessees, and do not constitute, any part of a contract. Nothing in these particulars shall be deemed to be a statement that the property is in good structural condition or otherwise nor that any of the services, appliances, equipment or facilities are in good working order. Purchasers should satisfy themselves of this prior to purchasing.