

FREEHOLD



House - Detached (EPC Rating: C)

**65 HEATHCLIFF AVENUE, FAIRFIELD, HITCHIN,
HERTS, SG5 4EY**

Offers Over
£305,000

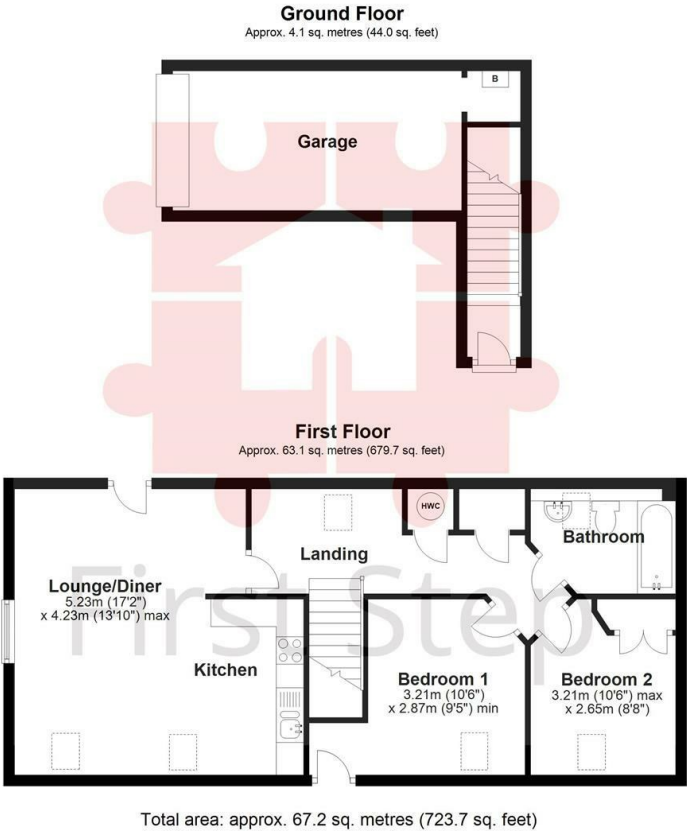


First Step



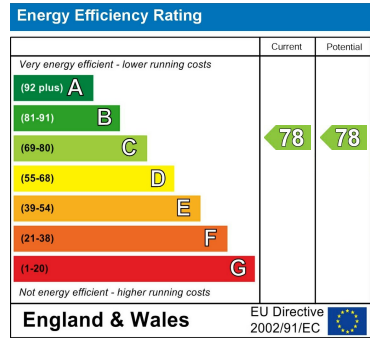
2 Bedroom House - Detached located in Hitchin

CHAIN FREE... DETACHED coach house... PRIVATE GARDEN... Open plan Living... JULIET BALCONIES... Two DOUBLE bedrooms... GARAGE & driveway parking... PEACEFUL PERIMETER LOCATION...



Council Tax Band
C
Energy Performance Graph

Call us on
01462 659 730
sales@firststep.ltd
www.firststep.ltd



Agents Note: Whilst every care has been taken to prepare these particulars, they are for guidance purposes only. All measurements are approximate and are for general guidance purposes only and whilst every care has been taken to ensure their accuracy, they should not be relied upon and potential buyers are advised to recheck the measurements.