



£450 pcm Fees Apply

To Let

1 Bedrooms Apartment
Allocated Parking

Rixton Grove, Thornton Cleveleys

Martin & Co Martin & Co Thornton
21 Victoria Road East, Thornton-Cleveleys, Lancashire, FY5 5HT
01253 866566
thorntoncleveleys@martinco.com



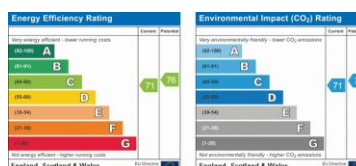
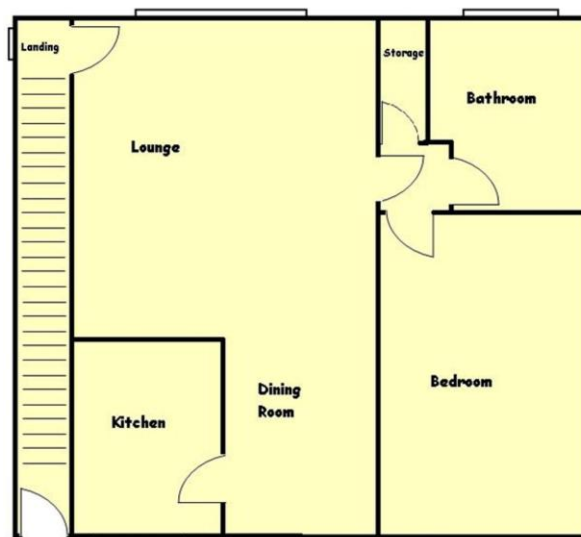
MARTIN&CO
Letting • Sales • Investment

£450 pcm Fees Apply

1 Bedroom Apartment

Modern First Floor Flat Offering Ready to Walk Into Accommodation with Own Entrance Door, Ample Ground Floor Storage Cupboard to House Bike Etc, Lounge, Modern Fitted Kitchen, Modern Fitted Bathroom, Double Bedroom, UPVC Double Glazing, Gas Central Heating System, Tastefully Decorated Throughout.

- Available now
- One bedroom apartment
- Allocated parking
- Purpose built apartment
- Secured Entrance
- Double Glazed Windows
- Gas Central Heating
- Deposit: £450
- EPC Rating: 71



Martin & Co Martin & Co Thornton
21 Victoria Road East, Thornton-Cleveleys, Lancashire, FY5 5HT
01253 866566
thorntoncleveleys@martinco.com



Property description

Martin & Co Martin & Co Thornton
21 Victoria Road East, Thornton-Cleveleys, Lancashire, FY5 5HT
01253 866566
thorntoncleveleys@martinco.com

