

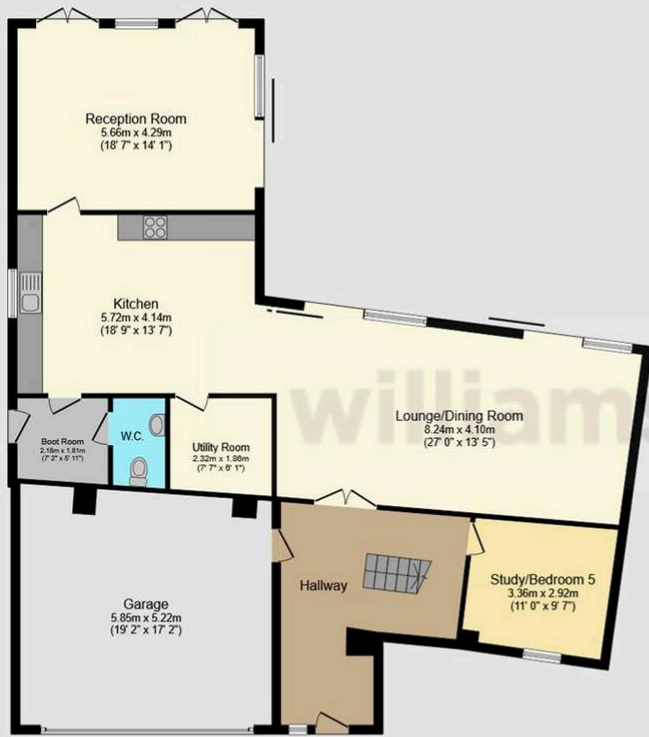


Bwlch Yr Nant, Cyffylliog, LL15 2DW – £625,000

Tenure: Freehold | EPC: B | Council Tax: G

Located in the charming village of Cyffylliog, Ruthin, this stunning new build property, completed in 2025, offers a perfect blend of modern living and picturesque surroundings. Designed by a talented architect, this home boasts an impressive layout with four to five spacious bedrooms, making it ideal for families or those seeking extra space for guests or a home office. The high specification throughout the property ensures that every detail has been thoughtfully considered, from the contemporary finishes to the energy-efficient features. The inclusion of an air-source heat pump and solar panels not only enhances the home's sustainability but also contributes to lower energy bills, making it an environmentally friendly choice. The spacious double garage offers convenient parking and additional storage options.

This property is a rare find, combining modern comforts with a serene location. Whether you are looking to settle down in a peaceful village or seeking a stylish family home, this exquisite house is sure to impress.



Ground Floor

Floor area 161.4 sq.m. (1,737 sq.ft.)



First Floor

Floor area 88.9 sq.m. (956 sq.ft.)

Total floor area: 250.2 sq.m. (2,693 sq.ft.)

This floor plan is for illustrative purposes only. It is not drawn to scale. Any measurements, floor areas (including any total floor area), openings and orientations are approximate. No details are guaranteed, they cannot be relied upon for any purpose and do not form any part of any agreement. No liability is taken for any error, omission or misstatement. A party must rely upon its own inspection(s). Powered by www.Propertybox.io



YOUR FREE
PROPERTY REPORT



WE OFFER FREE ADVICE

MORTGAGES - SURVEYS - SOLICITORS

