



Malvern Way, W13

£475,000

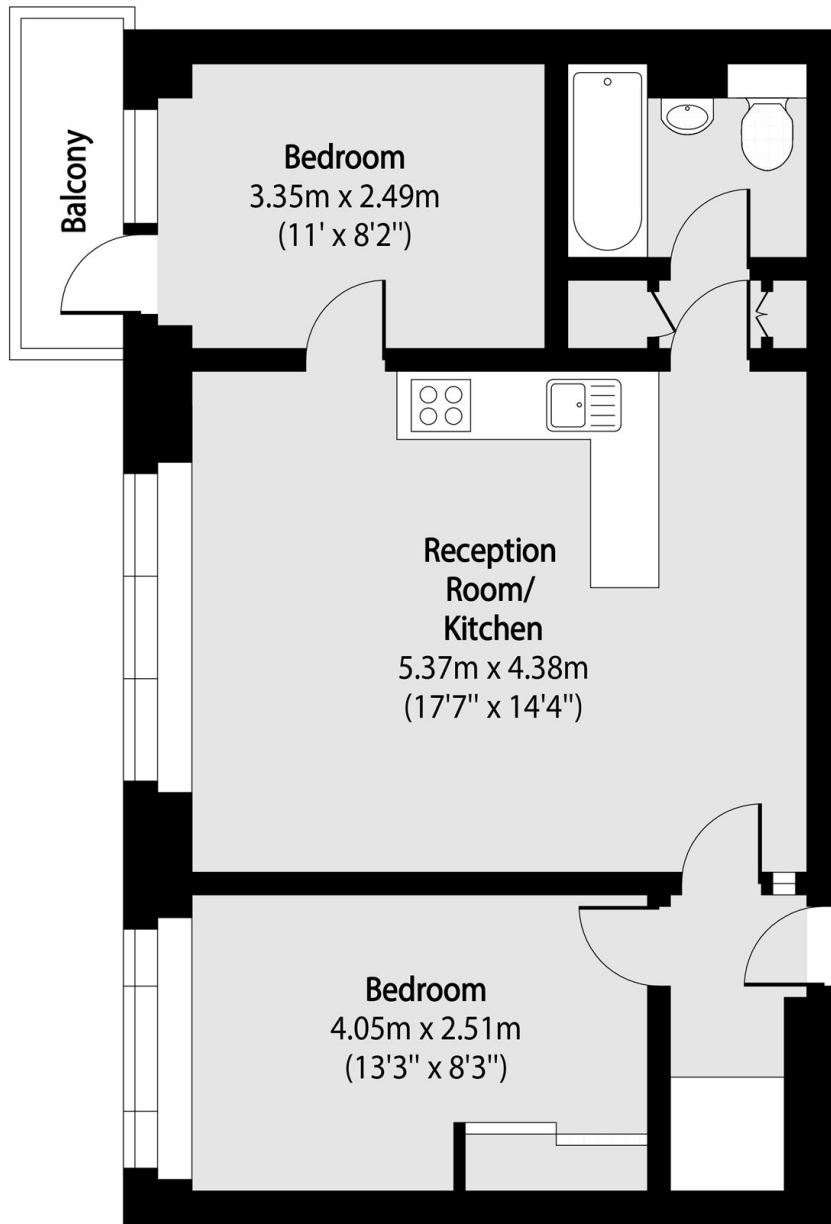
A well-presented two-bedroom purpose-built apartment situated on the second floor, offered to the market with no onward chain. Benefits include a long underlying lease and the added advantage of a garage.

Perfectly positioned next to the award-winning and popular Pitshanger Lane high street. Ealing Broadway and West Ealing stations are easily accessible via local bus routes and on foot, providing excellent connections including the Elizabeth, Central and District lines.

Features

- Two Bedrooms
- Second Floor
- Purpose Built
- Garage
- No Onward Chain
- Share of Freehold

Malvern Way, London, W13



Total area (approx): 53.72 sq m (578 sq. ft)

Balcony total area (approx): 2.61 sq m (28 sq. ft)