



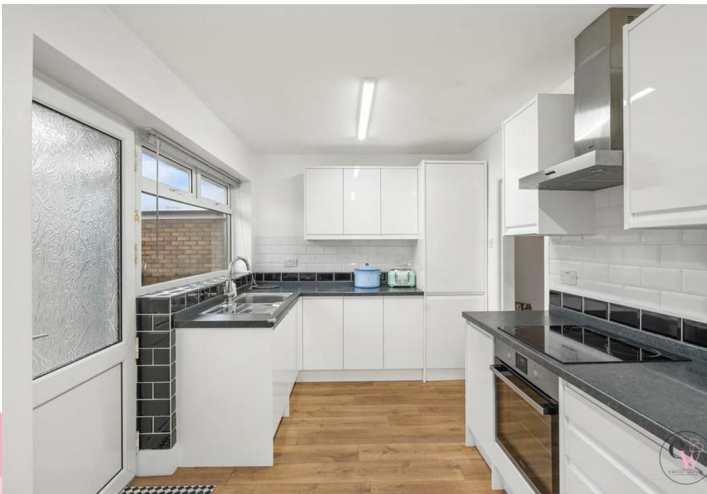
ESTATE AGENTS

[www.cwestateagents.co.uk](http://www.cwestateagents.co.uk)



## High Street, Winsford CW7 2DP

Offers in excess of £200,000



01606 514 152 | [info@cwestateagents.co.uk](mailto:info@cwestateagents.co.uk)  
@CWestateAgent | @CWestateAgents

# High Street

, Winsford, CW7 2DP

Offers in excess of £200,000



## Front Porch

## Hallway

12'7" x 8'6" (3.860m x 2.609m)

## Lounge

14'10" x 11'8" (4.534m x 3.565m)

## Breakfast Kitchen

17'5" x 8'9" (5.311m x 2.687m)

## Bedroom One

13'10" x 10'4" (4.222m x 3.171m)

## Bedroom Two

11'0" x 10'2" (3.368m x 3.112m)

## Bathroom

9'3" x 7'9" (2.839m x 2.382m)

## Rear Porch

## Detached Garage

## Externally

Driveway to the front with access to the rear via double gates that leads to a detached garage, paved patio area, laid to lawn area and fenced boundaries.

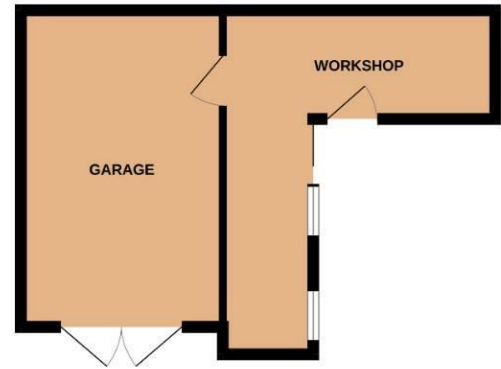


# Floor Plan

Bungalow  
73.5 sq.m. (791 sq.ft.) approx.



Outbuildings  
26.6 sq.m. (287 sq.ft.) approx.



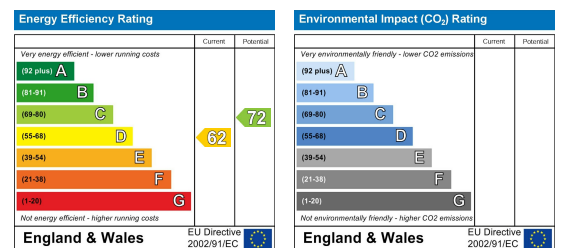
TOTAL FLOOR AREA: 100.1 sq.m. (1078 sq.ft.) approx.

Whilst every attempt has been made to ensure the accuracy of the floorplan contained here, measurements of doors, windows, rooms and any other items are approximate and no responsibility is taken for any error, omission or mis-statement. This plan is for illustrative purposes only and should be used as such by any prospective purchaser. The services, systems and appliances shown have not been tested and no guarantee as to their operability or efficiency can be given.  
Made with Metropix ©2026

## Viewing

Please contact us on 01606 514 152 if you wish to arrange a viewing appointment for this property or require further information.

## Energy Efficiency Graph



These particulars, whilst believed to be accurate are set out as a general outline only for guidance and do not constitute any part of an offer or contract. Intending purchasers should not rely on them as statements of representation of fact, but must satisfy themselves by inspection or otherwise as to their accuracy. No person in this firm's employment has the authority to make or give any representation or warranty in respect of the property.