

A photograph of a two-story semi-detached house. The house has a light-colored, textured exterior. It features a prominent curved bay window on the ground floor and a matching bay window on the upper floor. A white front door is visible on the left side of the house. A satellite dish is mounted on the wall to the right of the bay window. A wooden fence runs along the back of the property, and there is a large green bush on the left. The sky is blue with some clouds.

Castles

ASKING PRICE

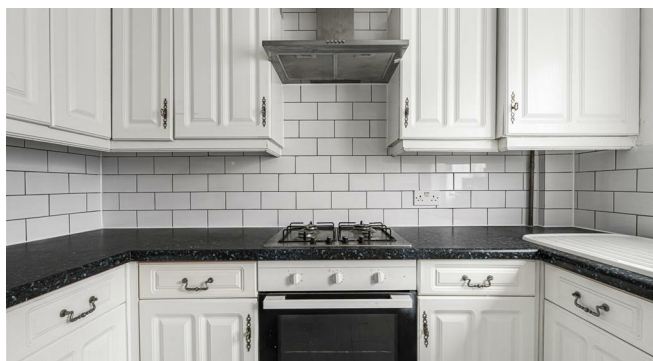
£575,000

Baker Street

Enfield, EN1 3QS

PROPERTY SUMMARY

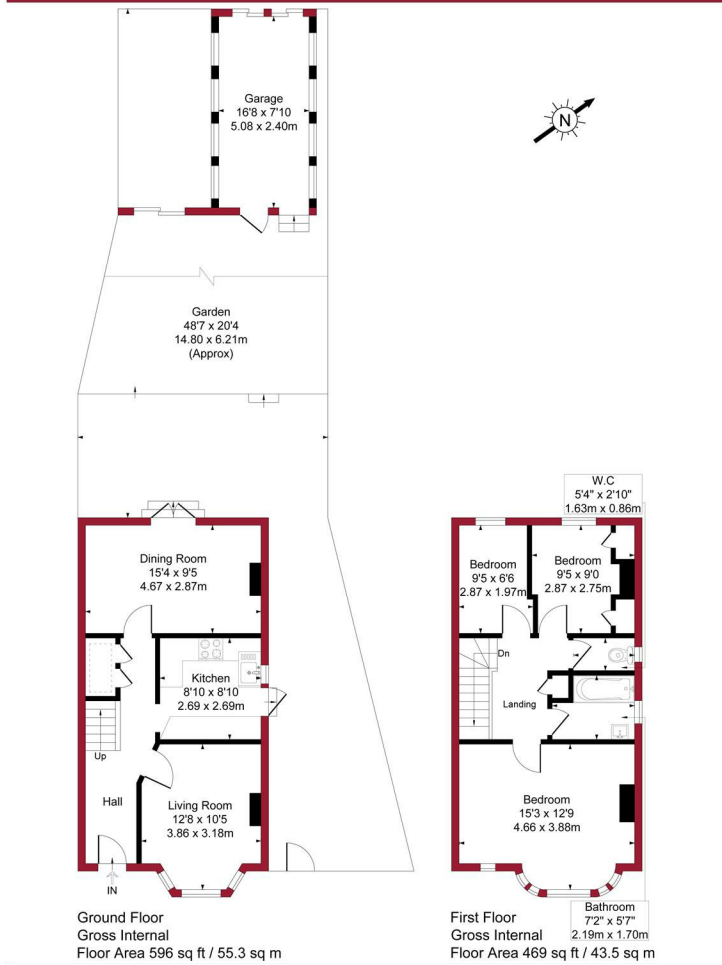
A spacious 3 bedroom semi-detached house located on the slip road at the junction of Baker Street and Clay Hill, close to Forty Hall. The property offers fantastic potential and is offered for sale on a chain free basis. Features include: front off-street parking for 2 cars, double glazing, gas central heating (untested), 2 separate reception rooms, 9' fitted kitchen, 1st floor bathroom, approx 50' rear garden, garage to rear via service road.



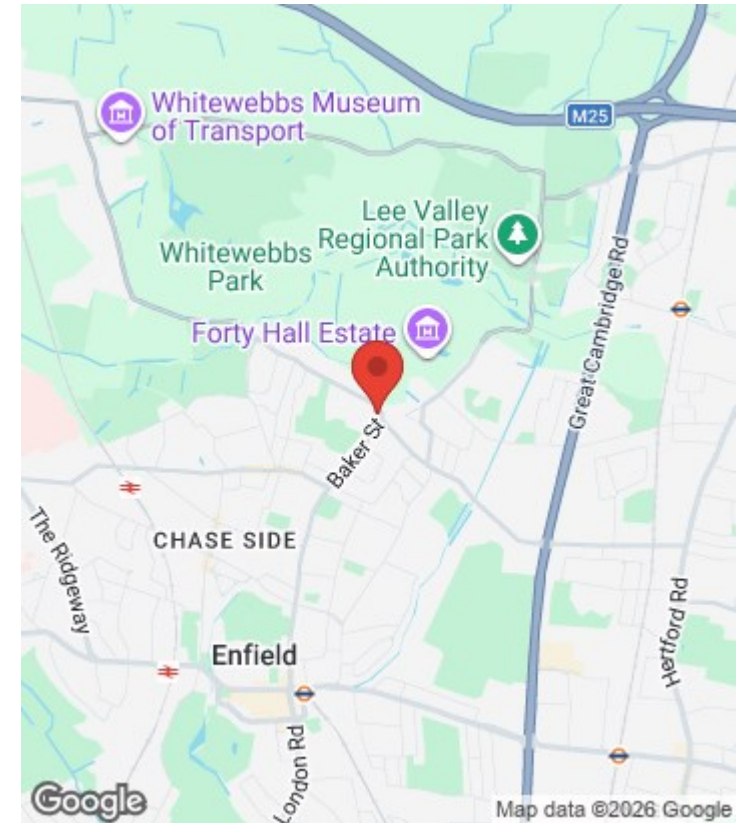
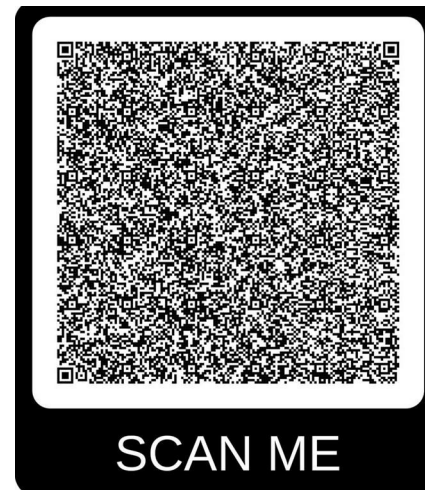


Baker Street, Enfield, EN1

Approximate Gross Internal Area = 1065 sq ft / 98.8 sq m
(Including Garage)



For a guide to the area
please scan this code for
more information



House - Semi-Detached

Freehold

Council: Enfield

Council Tax Band: E

Agents Note: Whilst every care has been taken to prepare these particulars, they are for guidance purposes only. All measurements are approximate and are for general guidance purposes only and whilst every care has been taken to ensure their accuracy, they should not be relied upon and potential buyers/tenants are advised to recheck the measurements



OFFICE ADDRESS

243 - 245 Hertford Road
Enfield
London
EN3 5JJ

OFFICE DETAILS

0208 804 8000
enfield@castles.london
<https://www.castles.london>

