



Connells
connells.co.uk 01280 822 727
FOR SALE

Connells

King Charles Close
Buckingham



Property Description

Situated on the ever-popular Page Hill development in Buckingham, this attractively presented home offers well-arranged accommodation, generous outside space and the convenience of being close to the local school and within easy reach of the town centre.

The property is entered via a porch that leads into a welcoming hall. From here, you access the bright and spacious sitting room, positioned at the rear of the home and enjoying views over the garden. The kitchen sits at the front and is well laid out, offering good storage and preparation space. The ground floor also includes internal access to the garage, providing excellent practicality for everyday living.

Upstairs, the property offers three well-proportioned bedrooms arranged from a central landing. The main bedroom benefits from its own en-suite, while the remaining two bedrooms are served by the family bathroom.

Externally, the rear garden is attractively landscaped, offering a pleasant and private outdoor space with a mix of lawn and paved areas—ideal for relaxing, entertaining or family activities.

To the front, the home features a generous newly installed driveway, providing ample off-road parking and enhancing the overall kerb appeal.

Offering a well-balanced layout, modern decoration and excellent proximity to local amenities, this home on Page Hill presents an ideal opportunity for buyers seeking comfort, convenience and a great Buckingham location.

Mortgage Services

Connells Buckingham have an experienced Mortgage Consultant who can offer advice and recommend products based on your circumstances. For more information on our fantastic services, contact us.

Entrance Porch

Entrance Hall

Kitchen

9' 11" x 6' 11" (3.02m x 2.11m)

Sitting Room

13' 1" x 18' 9" (3.99m x 5.71m)

Bedroom 1

13' 5" x 9' 1" (4.09m x 2.77m)

Bedroom 2

10' 5" x 9' 4" (3.17m x 2.84m)

Bedroom 3

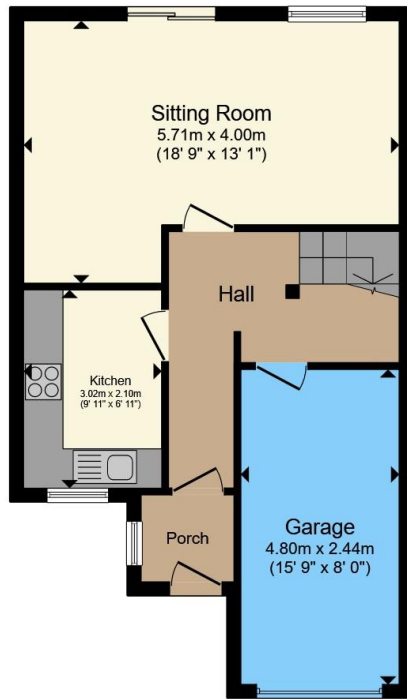
9' 8" x 5' 10" (2.95m x 1.78m)

Bathroom

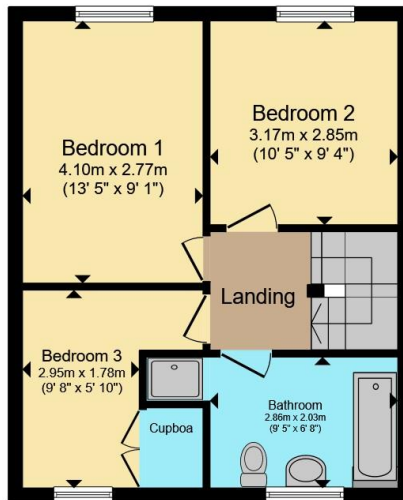
Garage

15' 9" x 8' (4.80m x 2.44m)





Ground Floor



First Floor

Total floor area 90.7 m² (976 sq.ft.) approx

This floor plan is for illustrative purposes only. It is not drawn to scale. Any measurements, floor areas (including any total floor area), openings and orientation are approximate. No details are guaranteed, they cannot be relied upon for any purpose and they do not form part of any agreement. No liability is taken for any error, omission or misstatement. A party must rely upon its own inspection(s). Powered by www.propertybox.io



To view this property please contact Connells on

T 01280 822 727

E buckingham@connells.co.uk

2 West Street
BUCKINGHAM MK18 1HL

EPC Rating: C Council Tax
Band: C

view this property online connells.co.uk/Property/BUK308072

Tenure: Freehold



1. MONEY LAUNDERING REGULATIONS Intending purchasers will be asked to produce identification documentation at a later stage and we would ask for your co-operation in order that there will be no delay in agreeing the sale. 2. These particulars do not constitute part or all of an offer or contract. 3. The measurements indicated are supplied for guidance only and as such must be considered incorrect. Potential buyers are advised to recheck measurements before committing to any expense. 4. We have not tested any apparatus, equipment, fixtures, fittings or services and it is in the buyers interest to check the working condition of any appliances.

Connells Residential is registered in England and Wales under company number 1489613, Registered Office is Cumbria House, 16-20 Hockliffe Street, Leighton Buzzard, Bedfordshire, LU7 1GN. VAT Registration Number is 500 2481 05.

See all our properties at www.connells.co.uk | www.rightmove.co.uk | www.zoopla.co.uk

Property Ref: BUK308072 - 0004