

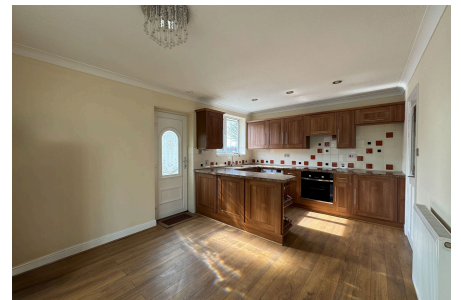
PETER LARGE

ESTATE AGENTS

16 Cherry Tree Walk, Rhyl, Denbighshire LL18 4JL

£275,000

🛏 3 🚿 1 🚗 1



We are pleased to offer for sale this good size detached three bedroom bungalow set in a sought after residential area close to the town of Rhyl. The property benefits by way of gas central heating, double glazing, conservatory, good size gardens and a detached garage. With shops catering for most everyday needs, the beach and promenade within walking distance and schools catering for all age groups nearby early viewing is highly recommended.

rhyl@peterlarge.com

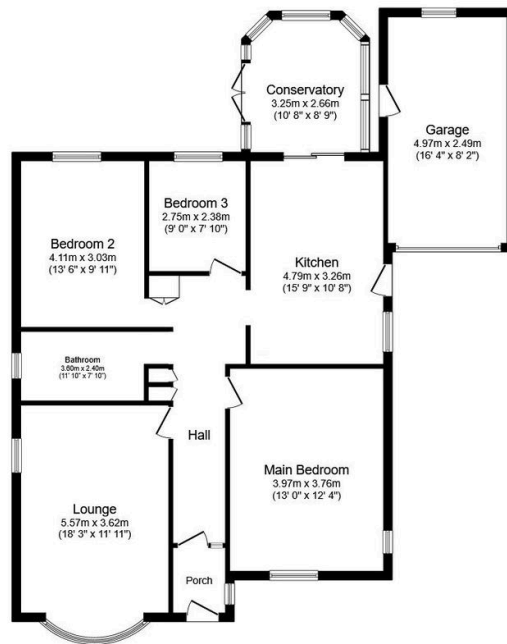
| 01745 334411

| www.peterlarge.com

19 CLWYD STREET, RHYL, DENBIGHSHIRE, LL18 3LA

Key Features

- DETACHED BUNGALOW
- THREE BEDROOMS
- LARGE KITCHEN/DINER
- SUNNY CONSERVATORY
- GARDENS FRONT AND BACK
- GARAGE
- AMPLE OFF ROAD PARKING
- EPC RATING - C
- COUNCIL TAX BAND - D
- INSTRUCTED - 20/03/2026



Floor Plan

Floor area 120.5 sq.m. (1,297 sq.ft.)

Total floor area: 120.5 sq.m. (1,297 sq.ft.)

This floor plan is for illustrative purposes only. It is not drawn to scale. Any measurements, floor areas (including any total floor area), openings and orientations are approximate. No details are guaranteed, they cannot be relied upon for any purpose and do not form any part of any agreement. No liability is taken for any error, omission or misstatement. A party must rely upon its own inspection(s). Powered by www.Propertybox.io