



8 Powell Street, Selby, YO8 4BX

SAVE TIME & BOOK YOUR VIEWING ON THE JIGSAW WEBSITE & CLICK 'REGISTER TO VIEW A PROPERTY' FROM OUR MAIN MENU

- Two Bedrooms
- Freehold
- Council Tax Band: A
- End-Terrace
- EPC: C
- On-Street Parking
- Town Centre Location
- Gas Central Heating
- Great for Commuters

£790 PCM

Two Bedroom End Terrace | On-Street Parking | Ideal For Commuters | Town Centre Location

Jigsaw Letting are pleased to welcome to the market this charming two-bedroom end terrace house located on Powell Street in the heart of Selby. This delightful property offers a perfect blend of comfort and convenience, making it an ideal choice for small families, or those seeking a cosy home.

As you enter, you are greeted by a spacious reception room that provides a warm and inviting atmosphere, perfect for relaxing or entertaining guests. The layout of the house is practical, with two well-proportioned bedrooms that offer ample space for rest and relaxation.

One of the standout features of this property is its enclosed rear yard, providing a private outdoor space for enjoying the fresh air or hosting summer barbecues. The yard is a wonderful addition for those who appreciate a bit of greenery without the maintenance of a larger garden.

Situated close to local amenities, this home ensures that you are never far from essential shops, schools, and recreational facilities. Additionally, its excellent transport links make it a great choice for commuters, allowing for easy access to nearby towns and cities.

The property benefits from gas central heating, ensuring warmth and comfort throughout the colder months. This end terrace house is not only a lovely place to live but also a practical choice for modern living.

In summary, this two-bedroom end terrace house on Powell Street is a fantastic opportunity for anyone looking to settle in Selby. With its convenient location, charming features, and comfortable living spaces, it is sure to attract interest. Do not miss the chance to make this delightful property your new home.

COUNCIL TAX BAND

Please note that the council tax band for the property has either been advised by the owner or we have sought from online resources. Whilst we endeavour to ensure our details are accurate and reliable, we strongly advise to make further enquiries before continuing.

HOW DO I APPLY FOR A PROPERTY?

To avoid disappointment please contact the office to request an application form for the property you wish to apply for following your viewing.

LETTINGS FEES UPON APPLICATION

Additional fees apply for this property and are as follows; 1 weeks rent holding fee for each property. Please note, the holding fee is deductible from the first month's rent on the property if successful. There will also be a bond for the property equal to 5 weeks rent which will be held for the duration of the tenancy with the DPS. Go to, www.jigsawletting.co.uk or call for more details

LETTINGS VIEWINGS

Strictly by appointment with the sole agents by contacting 01757 241123. If there is any point of particular importance to, that we will be pleased to provide additional information or to make any further enquiries. We will also confirm that the property remains available. This is particularly important if you are travelling some distance to view the property. A full copy of the EPC for the property is available upon request.

OPENING HOURS LETTING TEAM

Monday – Friday 9.00am to 5.00pm Saturday – 9.00am – 1.00pm

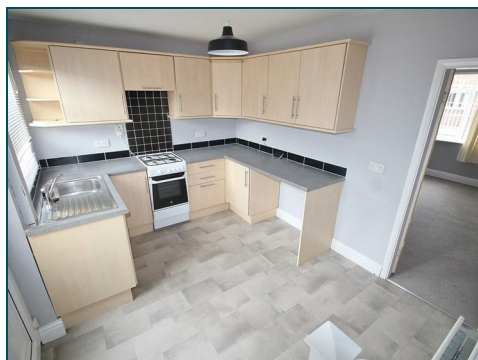
TO LET PROPERTY DETAILS

Whilst we endeavour to make our property details are accurate and reliable, if there is any point which is of particular importance to you, please contact us and we will be pleased to check the information. Do so particularly if contemplating travelling some distance. These particulars are issued in good faith but do not constitute representations of fact or form part of any offer or contract.

UTILITIES MATERIAL INFORMATION.

DELETE AS APPROPRIATE...

Electricity supply – Mains



Water supply – Mains

Sewerage – Mains

Heating – Gas Central Heating

Broadband – FTTP (fibre to the premises)

Mobile signal/coverage is good in this area



