



Not for marketing purposes INTERNAL USE ONLY

Hardwick Street
Tibshelf Alfreton



Property Description

Hall and Benson are delighted to offer for sale this two bedroom semi-detached home located in the popular village of Tibshelf. Having excellent road network links and being within easy reach of local amenities including schools, doctors and shops. The well presented accommodation briefly comprises; lounge, dining room, kitchen and porch. To the first floor there are two double bedrooms and a larger than average bathroom. Outside the home has walled fore garden leading to the front door and the rear of the property has a pleasant fully enclosed rear garden. Offered for sale with no upward chain. Viewing essential to fully appreciate the accommodation on offer.

Lounge

The home is entered via a UPVC front entrance door into the lounge. Having a UPVC double glazed window to the front elevation, gas central heating radiator, feature fireplace and ceiling light.

Dining Room

Having a UPVC double glazed window to the side elevation, gas central heating radiator, ceiling light, carpet flooring and stairs rising to the first floor.

Kitchen

Fitted with a matching range of wall and base units incorporating a complementary rolltop

work surface. Sink drainer unit with mixer tap over, space for white goods and tiled flooring.

Porch

Landing

With loft hatch access and doors leading to;

Bedroom One

With a UPVC double glazed window to the front elevation, gas central heating radiator, ceiling light and carpet flooring.

Bedroom Two

With a UPVC double glazed window to the rear elevation, gas central heating radiator, ceiling light and carpet flooring.

Bathroom

Fitted with a white four piece suite comprising of bath, shower cubicle with mains shower over, low level W/C and wash hand basin. Heated towel rail and a UPVC double glazed window to the rear and side elevation.

Outside

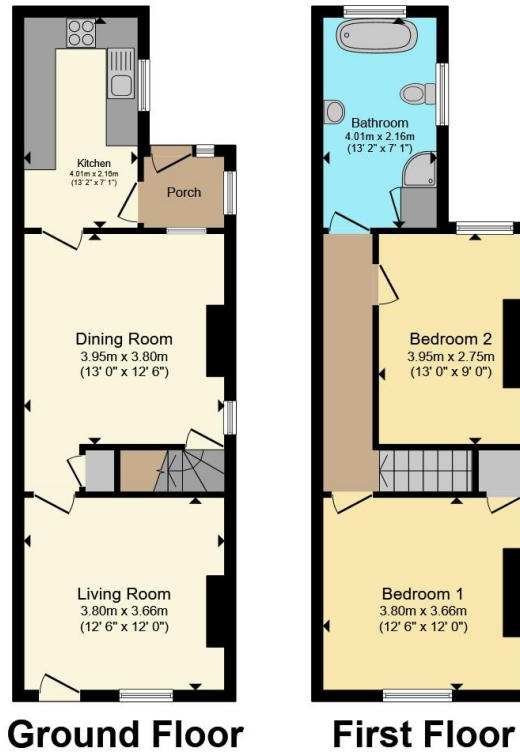
The front of the home has a walled fore garden with path leading to the front entrance door. The rear of the home has a fully enclosed rear garden which is laid to lawn

with a raised decking area. There is an outside tap and a useful outhouse.









Total floor area 85.9 m² (925 sq.ft.) approx

This floor plan is for illustrative purposes only. It is not drawn to scale. Any measurements, floor areas (including any total floor area), openings and orientation are approximate. No details are guaranteed, they cannot be relied upon for any purpose and they do not form part of any agreement. No liability is taken for any error, omission or misstatement. A party must rely upon its own inspection(s). Powered by www.propertybox.io



To view this property please contact Hall & Benson on

T 01773 521771
E alfreton@hallandbenson.co.uk

22A High Street
 ALFRETON DE55 7BN

EPC Rating: D Council Tax Band: A

check out more properties at hallandbenson.co.uk

Tenure: Freehold



1. MONEY LAUNDERING REGULATIONS Intending purchasers will be asked to produce identification documentation at a later stage and we would ask for your co-operation in order that there will be no delay in agreeing the sale. 2. These particulars do not constitute part or all of an offer or contract. 3. The measurements indicated are supplied for guidance only and as such must be considered incorrect. Potential buyers are advised to recheck measurements before committing to any expense. 4. We have not tested any apparatus, equipment, fixtures, fittings or services and it is in the buyers interest to check the working condition of any appliances.

Hall & Benson is a trading name of Connells Residential which is registered in England and Wales under company number 1489613, Registered Office is Cumbria House, 16-20 Hockliffe Street, Leighton Buzzard, Bedfordshire, LU7 1GN. VAT Registration Number is 500 2481 05.

See all our properties at www.hallandbenson.co.uk | www.rightmove.co.uk | www.zoopla.co.uk

Property Ref: ALF104364 - 0002